

OMAHA, NEBRASKA

RNAV (GPS) RWY 30

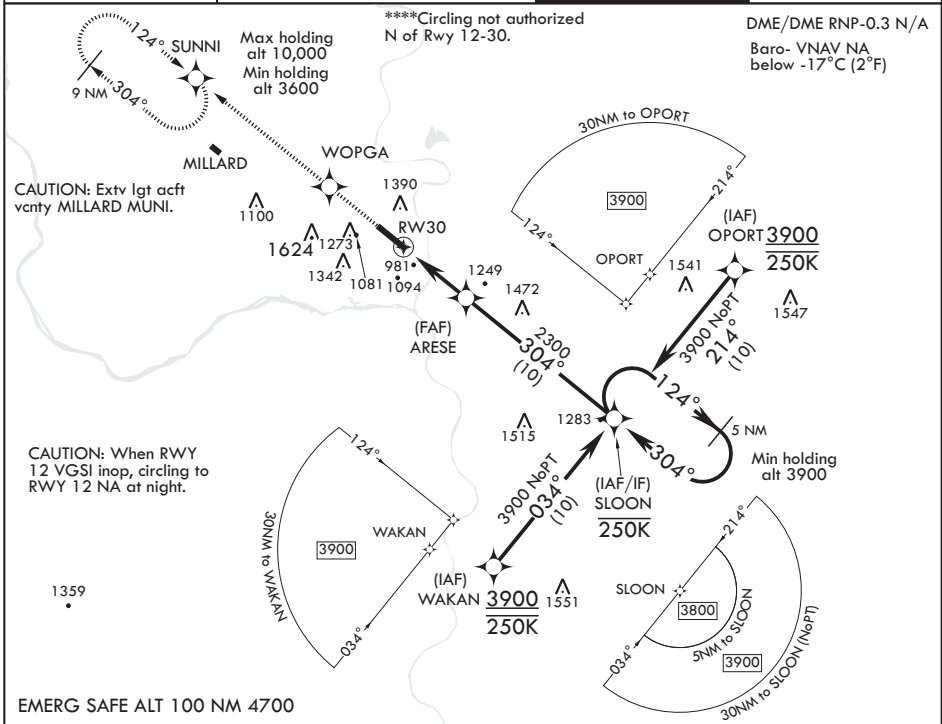
WAAS CH 91357 W30A	APCH CRS 304°	Rwy ldg 10,612
		TDZE 985
		Arpt Elev 1049

AL-544 (USAF)

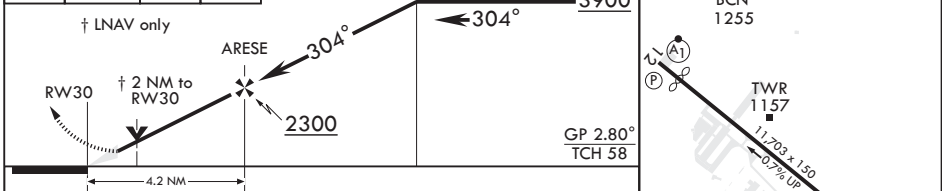
OFFUTT AFB (KOFF)

<p>⚠ * When ALS inop, increase all CAT RVR to 40 and vis to 3/4 mile. ** When ALS inop, increase all CAT vis to 1 1/2 miles. *** When ALS inop, increase CAT AB RVR to 55, vis to 1 mile, CAT CDE vis to 1 3/4 miles.</p>	<p>ALSF-1 </p>	<p>MISSED APPROACH: Climb direct to WOPGA, then track 304° to SUNNI and hold, maintain 3600.</p>
---	---------------------	--

<p>ATIS 126.025 273.5</p>	<p>OMAHA APP CON/DEP CON 120.1 354.05 W 124.5 263.0 E</p>	<p>TOWER 123.7 279.625</p>	<p>GND CON 121.7 289.4</p>
-------------------------------	---	--------------------------------	--------------------------------



3600	WOPGA	tr 304°	SUNNI	ELEV 1049	TDZE 985
------	-------	---------	-------	-----------	----------



CATEGORY	A	B	C	D	E
LPV DA*	1185/24		200	(200-1/2)	
LNAV/VNAV DA**	1400/55		415	(400-1)	
LNAV MDA***	1620/24 635 (600-1/2)		1620-1 3/8	635 (600-1 3/8)	
CIRCLING****	1620-1 571 (600-1)		1680-1 3/4 631 (700-1 3/4)	1940-3 891 (900-3)	

NC-2, 31 JAN 2019 to 28 FEB 2019

NC-2, 31 JAN 2019 to 28 FEB 2019