

OMAHA, NEBRASKA

RNAV (GPS) RWY 12

WAAS CH 91358 W12A	APCH CRS 124°	Rwy ldg 10,696
		TDZE 1049
		Arprt Elev 1049

AL-544 (USAF)

OFFUTT AFB (KOFF)

<p>V * When ALS inop, increase all CAT vis to 1 3/8 miles. ** When ALS inop, increase CAT AB RVR to 55, CDE vis to 1 1/2 miles. *** Circling not authorized N of Rwy 12-30.</p>	<p>ALSF-1</p>	<p>MISSED APPROACH: Climb direct to WONSI, then track 124° to SLPRS and hold, maintain 3000.</p>
--	---------------	--

<p>ATIS 126.025 273.5</p>	<p>OMAHA APP CON/DEP CON 120.1 354.05 W 124.5 263.0 E</p>	<p>TOWER 123.7 279.625</p>	<p>GND CON 121.7 289.4</p>
--------------------------------------	---	---------------------------------------	---------------------------------------

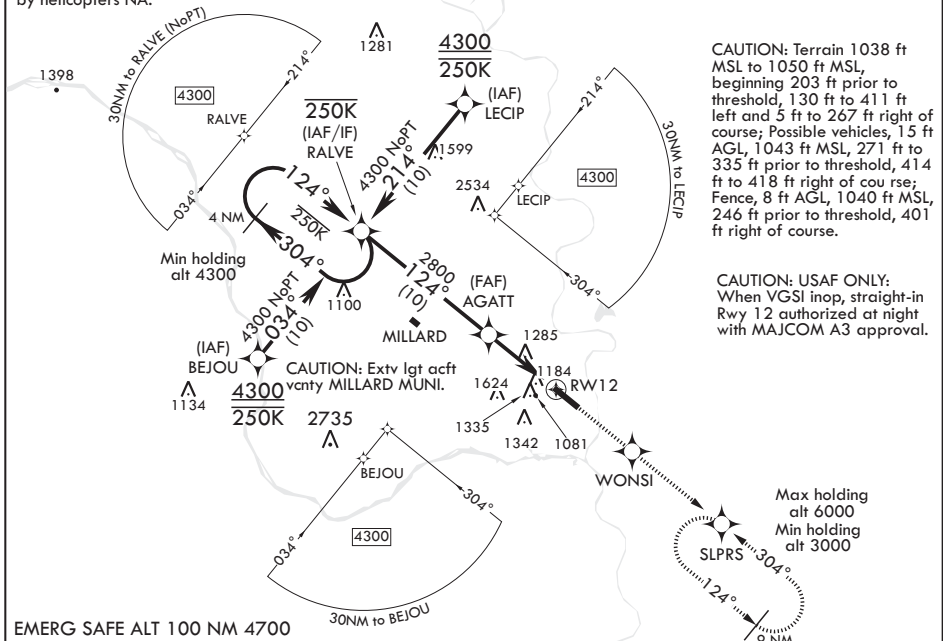
CAUTION: When VGSI inop, procedure NA at night.

Visibility reduction by helicopters NA.

DME/DME RNP-0.3 N/A
Baro-VNAV NA
below -17°C (2°F).

CAUTION: Terrain 1038 ft MSL to 1050 ft MSL, beginning 203 ft prior to threshold, 130 ft to 411 ft left and 5 ft to 267 ft right of course; Possible vehicles, 15 ft AGL, 1043 ft MSL, 271 ft to 335 ft prior to threshold, 414 ft to 418 ft right of course; Fence, 8 ft AGL, 1040 ft MSL, 246 ft prior to threshold, 401 ft right of course.

CAUTION: USAF ONLY: When VGSI inop, straight-in Rwy 12 authorized at night with MAJCOM A3 approval.



NC-2, 31 JAN 2019 to 28 FEB 2019

NC-2, 31 JAN 2019 to 28 FEB 2019

EMERG SAFE ALT 100 NM 4700

<p>GP 3.05° TCH 51'</p>	<p>4300 ← 304° → 124°</p>		<p>3000</p>	<p>WONSI</p>	<p>tr 124°</p>	<p>SLPRS</p>	<p>ELEV 1049</p>	<p>TDZE 1049</p>
	<p>AGATT</p>		<p>RW12</p>		<p>124° to RW12</p>		<p>HIRL Rwy 12-30</p>	
<p>5.3 NM</p>		<p>1090 BCN 1255</p>		<p>TWR 1157</p>		<p>11,703 x 150 0.7% DOWN</p>		<p>30</p>
CATEGORY	A	B	C	D	E			
LPV DA		1299/50	250	(300-1)				
LNAV/VNAV DA*		1469/50	420	(500-1)				
LNAV MDA**	1580/50	531 (600-1)	1580/55	531	(600-1)			
CIRCLING***	1580-1 531 (600-1)	1600-1 551 (600-1)	1680-1 3/4 631 (700-1 3/4)	1940-3	891 (900-3)	<p>Rwy 12 ldg 10,696' Rwy 30 ldg 10,612' Rwy 12-30 ALS nstd</p>		

OMAHA, NEBRASKA

41°07'N - 95°55'W

OFFUTT AFB (KOFF)

Amdt 2 19JUL18

RNAV (GPS) RWY 12