

OMAHA, NEBRASKA

ILS or LOC Y RWY 30

LOC I-OFF 109.5	APCH CRS 304°	Rwy ldg 10,612 TDZE 985 Arprt Elev 1049
---------------------------	-------------------------	--

AL-544 [USAF]

OFFUTT AFB (KOFF)

▼ * When ALS inop, increase CAT ABCDE RVR to 40 and vis to 3/4 mile.
 ** When ALS inop, increase CAT ABCDE RVR to 55 and vis to 1 mile.



MISSED APPROACH: Climb to 3000 via OFF TACAN R-299 to SARPY and hold.

ATIS 126.025 273.5

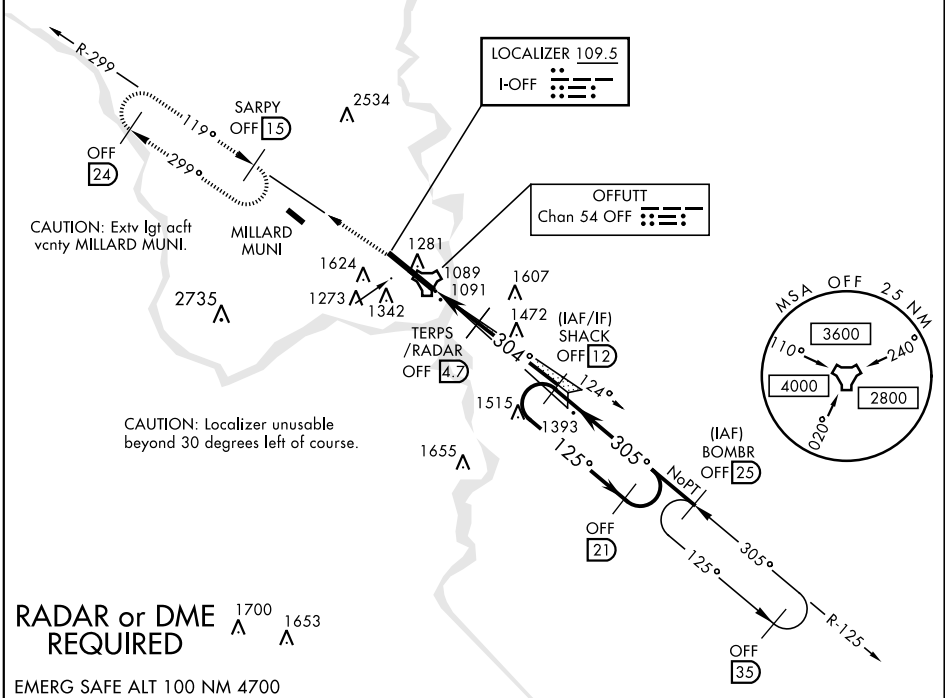
OMAHA APP CON E 124.5 263.0 W 120.1 354.05
--

OFFUTT TOWER 123.7 279.625

GND CON 121.7 289.4

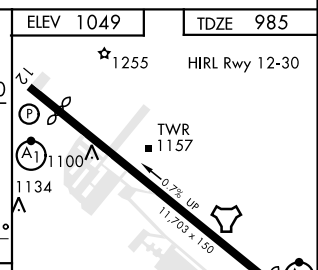
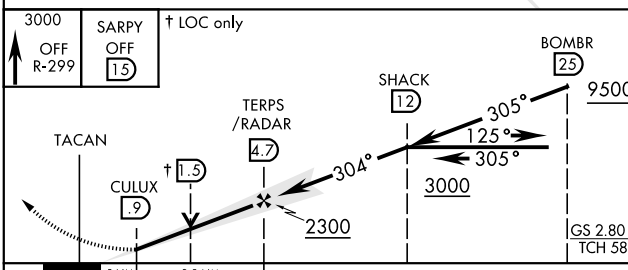
*** Circling not authorized N of Rwy 12-30.

CAUTION: When Rwy 12 VGSi inop, circling to Rwy 12 not authorized at night.



NC-2, 31 JAN 2019 to 28 FEB 2019

NC-2, 31 JAN 2019 to 28 FEB 2019



CATEGORY	A	B	C	D	E
S-ILS 30 *	1185/24		200	(200-1/2)	
S-LOC 30 **	1360/24	375 (400-1/2)	1360/35	375	(400-3/4)
CIRCLING ***	1500-1 451 (500-1)	1600-1 551 (600-1)	1680-1 3/4 631 (700-1 3/4)	1940-3	891 (900-3)

ELEV	1049	TDZE	985
HIRL Rwy 12-30			
FAF to MAP 3.8 NM			
Knots	60	90	120 150 180
Min:Sec	3:48	2:32	1:54 1:31 1:16

OMAHA, NEBRASKA

41°07'N-95°54'W

OFFUTT AFB (KOFF)

Amdt 5 13SEP18

ILS or LOC Y RWY 30