

OMAHA, NEBRASKA

ILS or LOC RWY 12

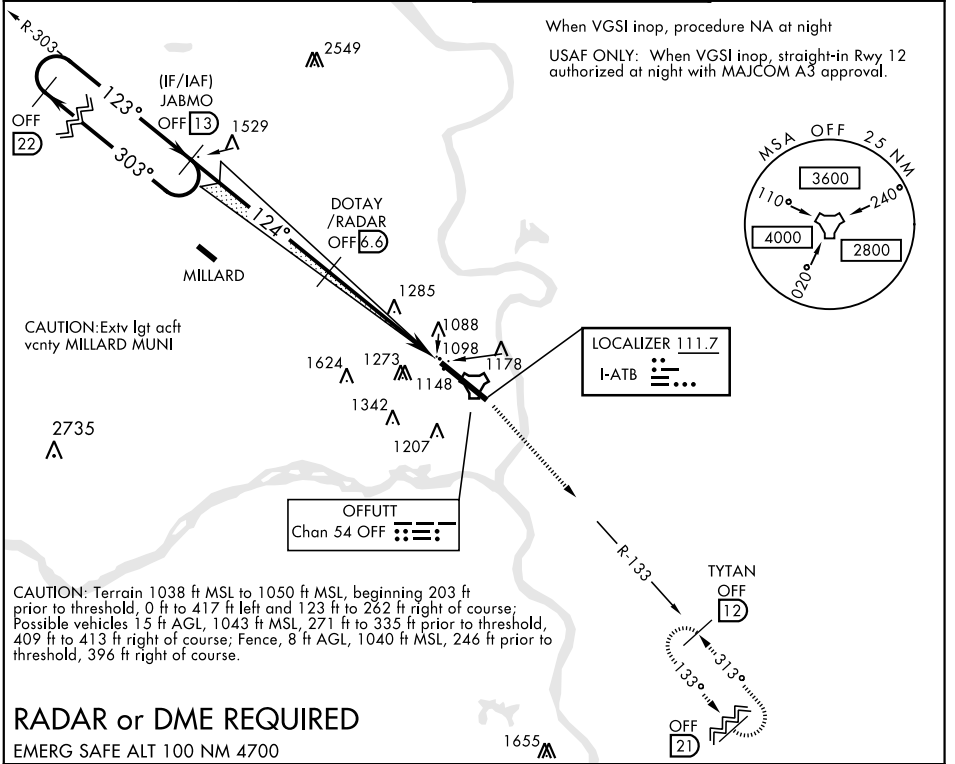
LOC I-ATB 111.7	APCH CRS 124°	Rwy ldg 10,696 TDZE 1049 Arprt Elev 1049
---------------------------	-------------------------	---

AL-544 [USAF]

OFFUTT AFB (KOFF)

<p>▼ * When ALS inop, increase CAT AB RVR to 55, CAT CDE vis to 1 3/8 miles. ** Circling not authorized N of Rwy 12-30.</p>	<p>ALSF-1 A1</p>	<p>MISSED APPROACH: Climb to 3000 via OFF TACAN R-133 to TYTAN and hold.</p>
---	----------------------	--

<p>ATIS 126.025 273.5</p>	<p>OMAHA APP CON E 124.5 263.0 W 120.1 354.05</p>	<p>OFFUTT TOWER 123.7 279.625</p>	<p>GND CON 121.7 289.4</p>
--------------------------------------	---	--	---------------------------------------



When VGSI inop, procedure NA at night

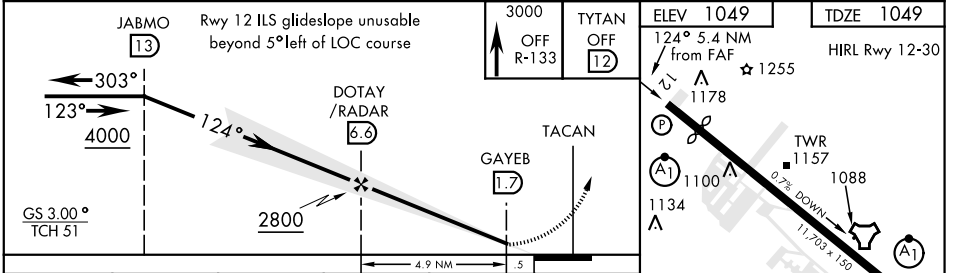
USAF ONLY: When VGSI inop, straight-in Rwy 12 authorized at night with MAJCOM A3 approval.

NC-2, 31 JAN 2019 to 28 FEB 2019

NC-2, 31 JAN 2019 to 28 FEB 2019

RADAR or DME REQUIRED

EMERG SAFE ALT 100 NM 4700



CATEGORY	A	B	C	D	E	ELEV 1049 124° 5.4 NM from FAF ☆ 1255 HIRL Rwy 12-30
S-ILS 12		1299/50	250	(300-1)		
S-LOC 12*	1580/50	531 (600-1)	1580/55	531 (600-1)		
CIRCLING**	1580-1 531 (600-1)	1600-1 551 (600-1)	1680-1 3/4 631 (700-1 3/4)	1940-3	891 (900-3)	
FAF to MAP 4.9 NM						
Knots						
60 90 120 150 180						
Min:Sec						
4:54 3:16 2:27 1:58 1:38						

OMAHA, NEBRASKA

41°07'N-95°54'W

OFFUTT AFB (KOFF)

Amtd 5 13SEP18

ILS or LOC RWY 12