

OMAHA, NEBRASKA

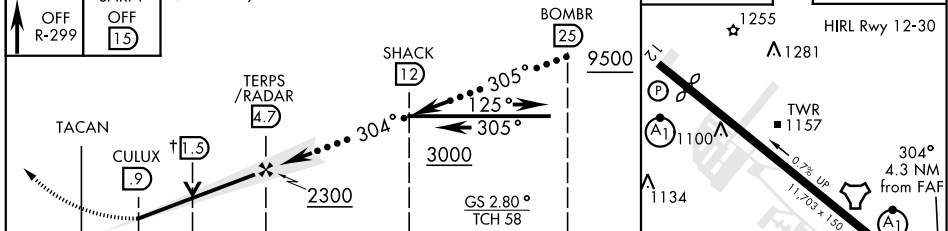
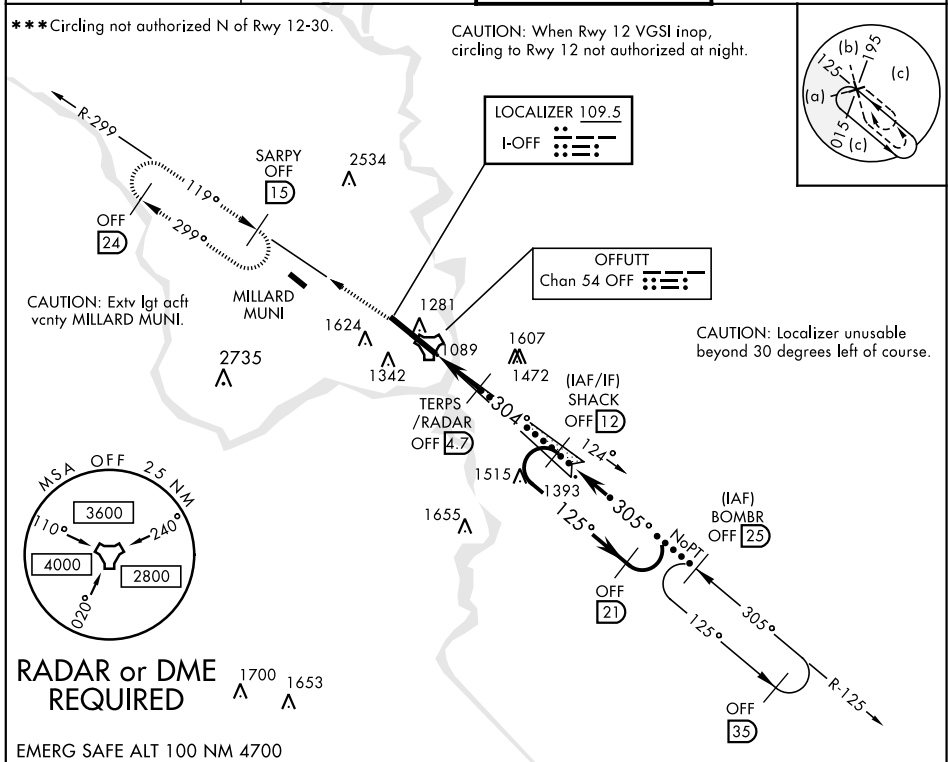
HI-ILS or LOC Z RWY 30

LOC I-OFF 109.5	APCH CRS 304°	Rwy ldg 10,612 TDZE 985 Arprt Elev 1049	JAL-544 [USAF]	OFFUTT AFB (KOFF)
---------------------------	-------------------------	--	----------------	-------------------

* When ALS inop, increase CAT CDE RVR to 40 and vis to 3/4 mile.
 ** When ALS inop, increase CAT CDE RVR to 55 and vis to 1 mile.

MISSED APPROACH: Climb to 3000 via OFF TACAN R-299 to SARPY and hold.

ATIS 126.025 273.5	OMAHA APP CON E 124.5 263.0 W 120.1 354.05	OFFUTT TOWER 123.7 279.625	GND CON 121.7 289.4
------------------------------	--	--------------------------------------	-------------------------------



OMAHA, NEBRASKA 41°07'N-95°54'W OFFUTT AFB (KOFF)

HI-ILS or LOC Z RWY 30

NC-2, 31 JAN 2019 to 28 FEB 2019

NC-2, 31 JAN 2019 to 28 FEB 2019