

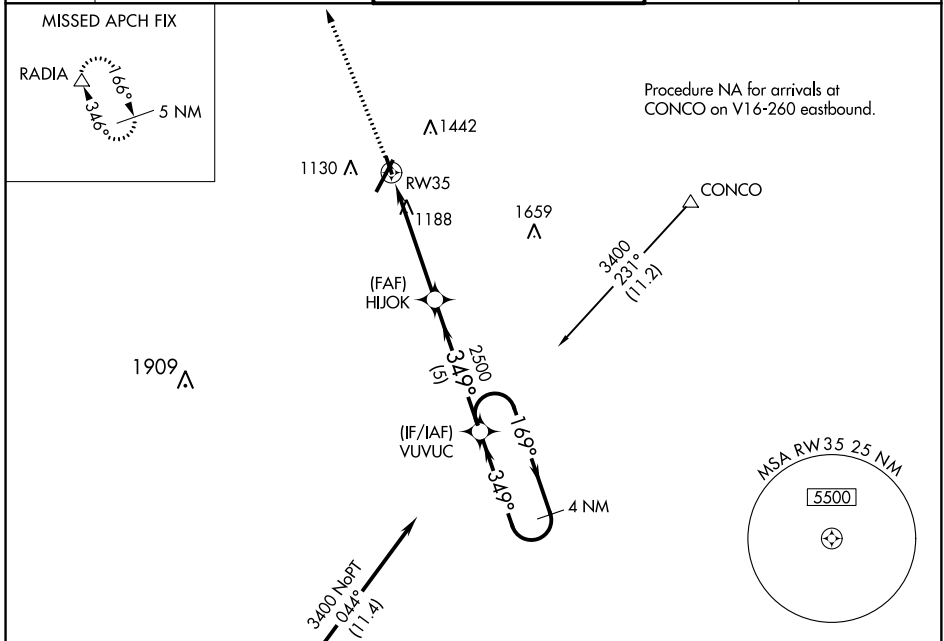
WAAS CH 93634 W35A	APP CRS 349°	Rwy Idg TDZE Apt Elev	3386 933 938
--	------------------------	-----------------------------	---

RNAV (GPS) RWY 35

LYNCHBURG RGNL/PRESTON GLENN FIELD (LYH)

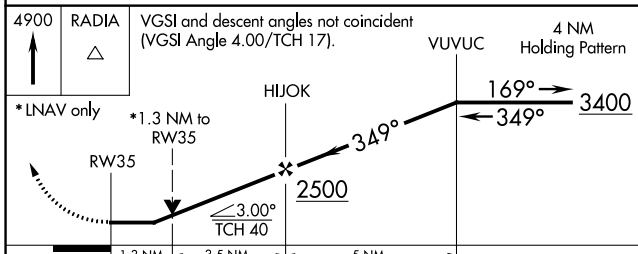
RNP APCH.	<p>▼ Circling Rwy 17 NA at night. ▲ Rwy 35 helicopter visibility reduction below ¾ SM NA.</p>	MISSED APPROACH: Climb to 4900 direct RADIA and hold.
-----------	---	---

ATIS 119.8	ROANOKE APP CON 135.0 254.325	LYNCHBURG TOWER * 127.65 (CTAF) 257.8	GND CON 121.9	UNICOM 122.95
----------------------	---	---	-------------------------	-------------------------

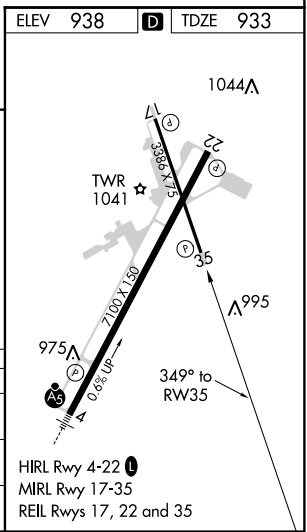


ELEV 938	D TDZE 933
----------	-------------------

Procedure NA for arrivals at SYCAM on V469 southbound.



CATEGORY	A	B	C	D
LP MDA	1480-1	547 (600-1)		NA
LNAV MDA	1500-1	567 (600-1)		NA
C CIRCLING	1660-1 722 (800-1)	1780-1 ¼ 842 (900-1 ¼)		NA



NE-3, 31 JAN 2019 to 28 FEB 2019

NE-3, 31 JAN 2019 to 28 FEB 2019

RNAV (GPS) RWY 35