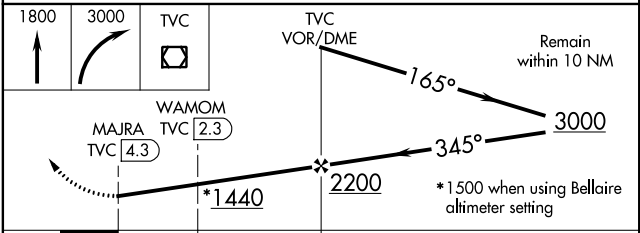
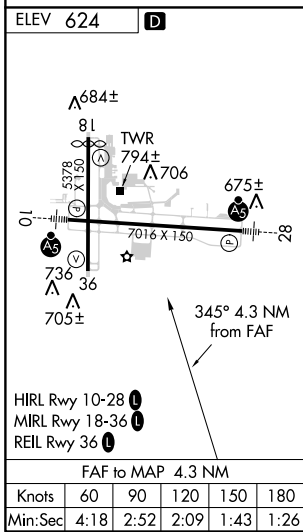
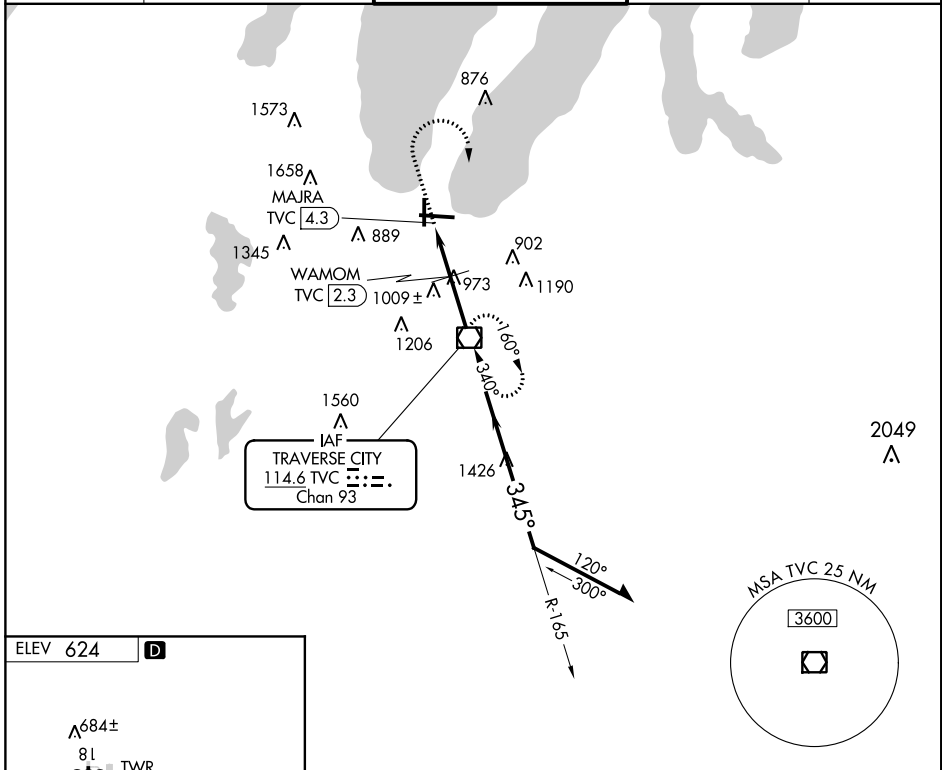


VOR/DME TVC 114.6 Chan 93	APP CRS 345°	Rwy Idg TDZE Apt Elev 624	N/A N/A 624
---	------------------------	---	--

VOR-A
CHERRY CAPITAL (TVC)

⚠ ⚠ -20°C	When local altimeter setting not received, use Bellaire altimeter setting and increase all MDA 60 feet and all Cat C visibility ¼ mile. Circling to Rwy 18 NA at night.	MISSED APPROACH: Climb to 1800 then climbing right turn to 3000 direct TVC VOR/DME and hold.		
ATIS 119.175	MINNEAPOLIS CENTER 132.9 338.3	TRAVERSE CITY TOWER * 124.2 (CTAF) 0 348.6	GND CON 121.8 348.6	UNICOM 122.95



CATEGORY	A	B	C	D
C CIRCLING	1440-1¼	816 (900-1¼)	1500-2½ 876 (900-2½)	1720-3 1096 (1100-3)
WAMOM FIX MINIMUMS (DME REQUIRED)				
C CIRCLING	1300-1	676 (700-1)	1500-2½ 876 (900-2½)	1720-3 1096 (1100-3)

EC-1, 31 JAN 2019 to 28 FEB 2019

EC-1, 31 JAN 2019 to 28 FEB 2019