

WAAS CH 97535 W28A	APP CRS 279°	Rwy Idg TDZE Apt Elev	7016 616 624
--	------------------------	-----------------------------	---

RNAV (GPS) RWY 28

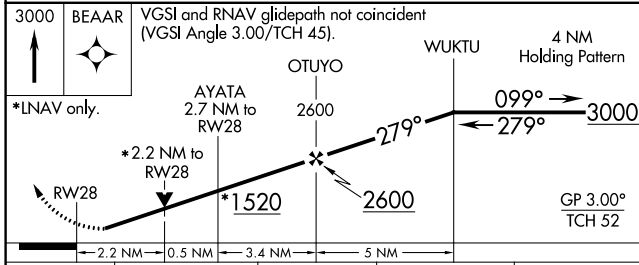
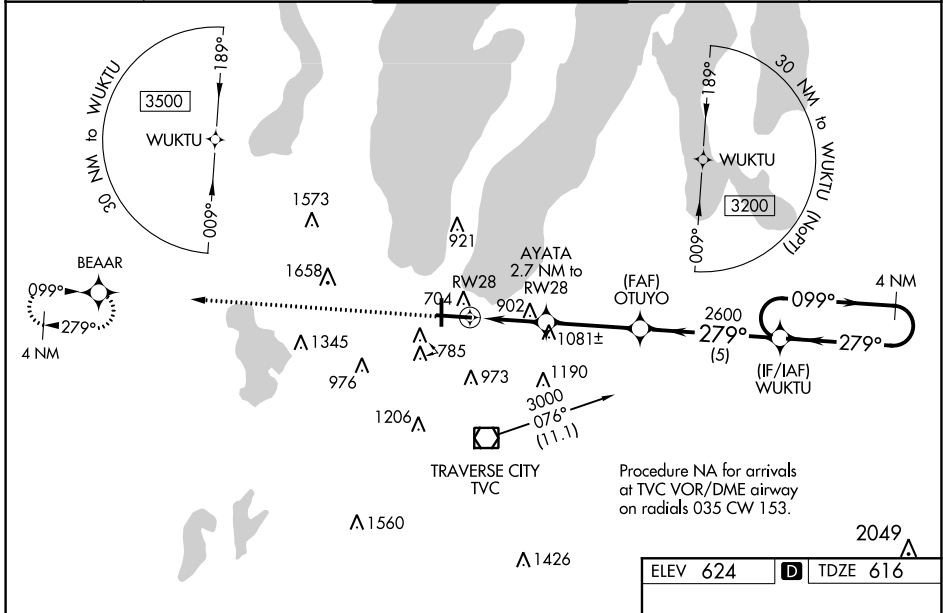
CHERRY CAPITAL (TVC)

⚠ DME/DME RNP-0.3 NA. For uncompensated Baro-VNAV systems, LNAV/VNAV NA below -19°C (2°F) or above 54°C (130°F). Baro-VNAV and VDP NA with Bellaire altimeter setting. When local altimeter setting not received, Bellaire altimeter setting: increase DA 51 feet and all MDA 60 feet. Increase LPV all Cats visibility 1/8 mile, LNAV/VNAV visibility all Cats 1/4 mile and LNAV Cat B visibility 1/4 mile and C/D visibilities 1/8 mile and Circling Cat B/C visibility 1/4 mile. Night Landing: Rwy 18 NA. For inop MALS, increase all LPV all Cats visibility to 1/4, LNAV Cats C/D visibility to 2 miles. For inop MALS when using Bellaire altimeter setting, increase LPV all Cats visibility to 1/2 mile, LNAV Cats C/D visibility to 2 1/2 miles. #Missed approach requires minimum climb of 237 feet per NM to 2000.

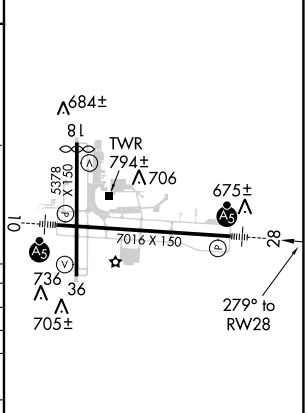
MALS

MISSED APPROACH:
Climb to 3000 direct BEAAR and hold.

ATIS 119.175	MINNEAPOLIS CENTER 132.9 338.3	TRAVERSE CITY TOWER * 124.2(CTAF) 0 348.6	GND CON 121.8 348.6	UNICOM 122.95
------------------------	--	---	-------------------------------	-------------------------



ELEV 624	D TDZE 616
----------	-------------------



CATEGORY	A	B	C	D
LPV DA		# 816-1/2	200 (200-1/2)	
LPV DA		963-7/8	347 (400-7/8)	
LNAV/VNAV DA		1330-2	714 (800-2)	
LNAV MDA	1340-1/2	724 (800-1/2)	1340-1 5/8	724 (800-1 5/8)
C CIRCLING	1340-1	716 (800-1)	1500-2 1/2 876 (900-2 1/2)	1720-3 1096 (1100-3)

- HIRL Rwy 10-28
- MIRL Rwy 18-36
- REIL Rwy 36

EC-1, 31 JAN 2019 to 28 FEB 2019

EC-1, 31 JAN 2019 to 28 FEB 2019