

VORTAC FSD 115.0 Chan 97	APP CRS 147°	Rwy Idg 8000 TDZE 1429 Apt Elev 1430
--	------------------------	---

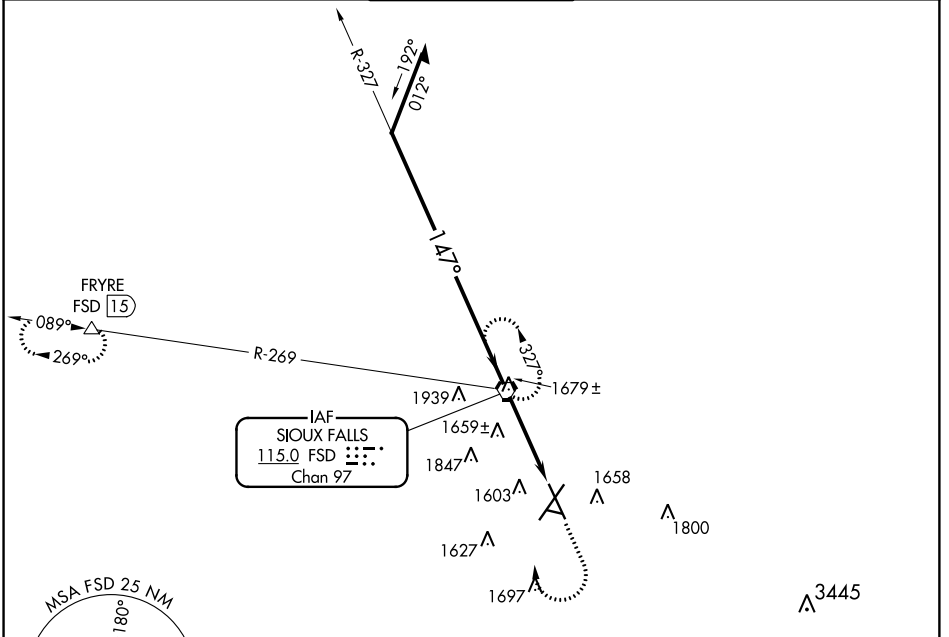
VOR or TACAN RWY 15

JOE FOSS FIELD (FSD)

▲ Rwy 15 helicopter visibility reduction below 3/4 SM NA.

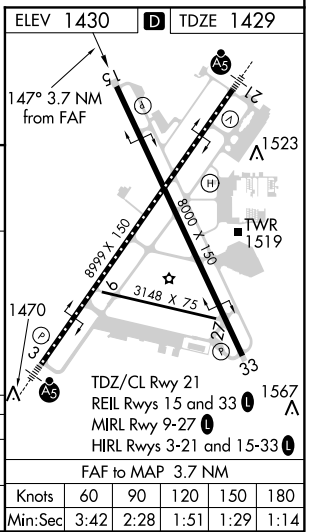
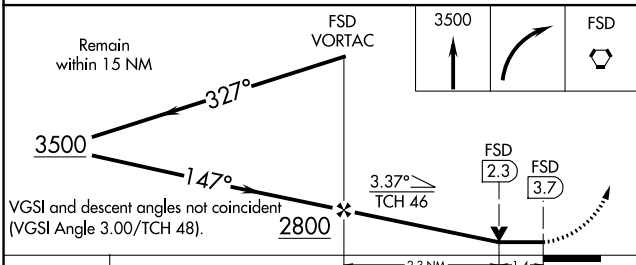
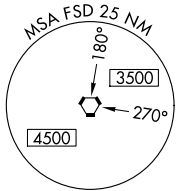
MISSED APPROACH: Climb to 3500 then right turn direct FSD VORTAC and hold. (TACAN aircraft continue climb to 5000 via FSD R-269 to FRYRE 15 DME and hold west, right turns, 089° inbound)

ATIS 126.6	SIoux FALLS APP CON* 125.8 284.725	SIoux FALLS TOWER* 118.3 (CTAF) 257.8	GND CON 121.9 348.6	UNICOM 122.95
----------------------	--	--	-------------------------------	-------------------------



NC-1, 31 JAN 2019 to 28 FEB 2019

NC-1, 31 JAN 2019 to 28 FEB 2019



CATEGORY	A	B	C	D	E
S-15	1920-1	491 (500-1)	1920-1 3/8 491 (500-1 3/8)		
CIRCLING	1980-1	550 (600-1)	1980-1 1/2 550 (600-1 1/2)	2040-2 610 (700-2)	2300-3 870 (900-3)

Knots	60	90	120	150	180
Min:Sec	3:42	2:28	1:51	1:29	1:14