

VORTAC FSD 115.0 Chan 97	APP CRS 326°	Rwy Idg 8000 TDZE 1424 Apt Elev 1430
--	------------------------	---

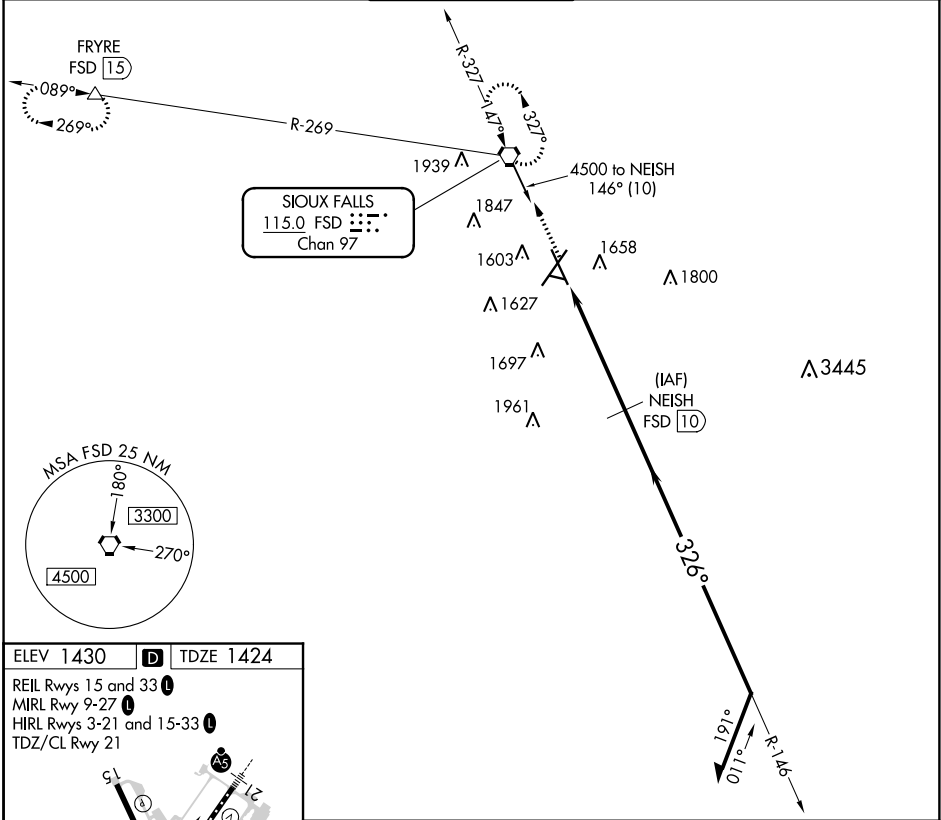
VOR/DME or TACAN RWY 33

JOE FOSS FIELD (FSD)

ASR Rwy 33 helicopter visibility reduction below ¼ SM NA.

MISSED APPROACH: Climb to 3400 direct FSD VORTAC and hold. (TACAN aircraft continue climb to 5000 via FSD R-269 to FRYRE 15 DME and hold west, right turns, 089° inbound.)

ATIS 126.6	SIoux FALLS APP CON* 125.8 284.725	SIoux FALLS TOWER* 118.3 (CTAF) 257.8	GND CON 121.9 348.6	UNICOM 122.95
----------------------	--	---	-------------------------------	-------------------------



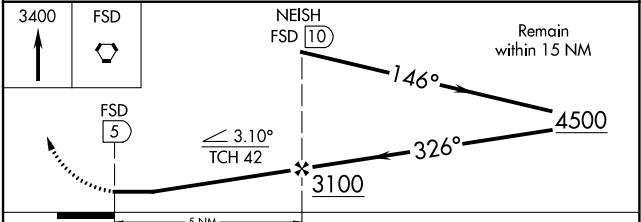
NC-1, 31 JAN 2019 to 28 FEB 2019

NC-1, 31 JAN 2019 to 28 FEB 2019

ELEV 1430 TDZE 1424

REIL Rwy 15 and 33
MIRL Rwy 9-27
HIRL Rwy 3-21 and 15-33
TDZ/CL Rwy 21

326° 5 NM from FAF



CATEGORY	A	B	C	D	E
S-33	1940-1	516 (600-1)	1940-1⅓ 516 (600-1⅓)		
CIRCLING	1980-1	550 (600-1)	1980-1½ 550 (600-1½)	2040-2 610 (700-2)	2300-3 870 (900-3)