

RNAV (GPS) RWY 9

JOE FOSS FIELD (FSD)

APP CRS 098°	Rwy Idg TDZE Apt Elev	3148 1424 1430
------------------------	-----------------------------	---

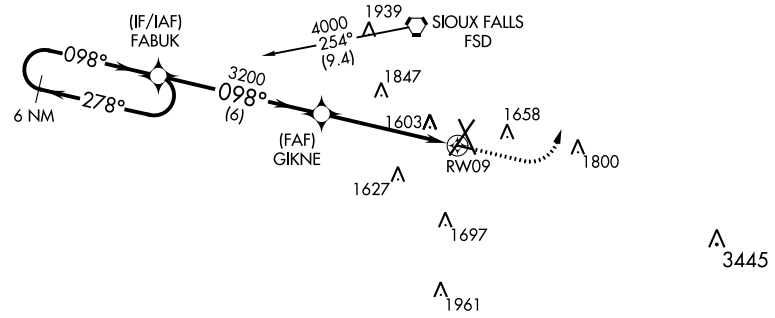
RNP APCH.
 Rwy 9 helicopter visibility reduction below 3/4 SM NA.
 ASR

MISSED APPROACH: Climb to 2500 then climbing left turn to 4000 direct MOPUE WP and hold.

ATIS 126.6	SIoux FALLS APP CON* 125.8 284.725	SIoux FALLS TOWER* 118.3 (CTAF) 257.8	GND CON 121.9 348.6	UNICOM 122.95
----------------------	--	---	-------------------------------	-------------------------

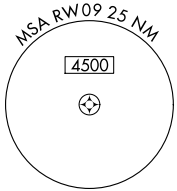


Procedure NA for arrivals on FSD VORTAC airway radials 202 CW 297.

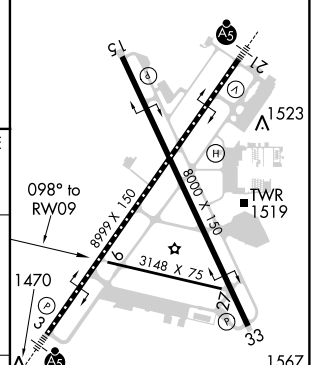
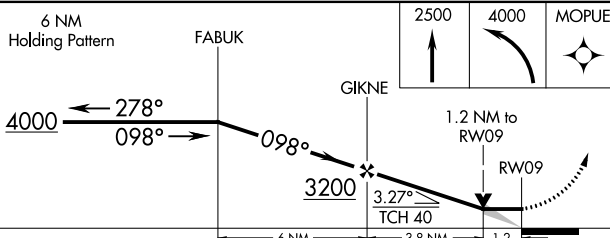


NC-1, 31 JAN 2019 to 28 FEB 2019

NC-1, 31 JAN 2019 to 28 FEB 2019



ELEV 1430	TDZE 1424
-----------	-----------



CATEGORY	A	B	C	D
LNAV MDA	1880-1	456 (500-1)		NA
CIRCLING	1980-1	550 (600-1)		NA

TDZ/CL Rwy 21
 MIRL Rwy 9-27
 REIL Rwys 15 and 33
 HIRL Rws 3-21 and 15-33