

WAAS CH 40135 W33A	APP CRS 330°	Rwy Idg TDZE Apt Elev	8000 1424 1430
--	------------------------	-----------------------------	---

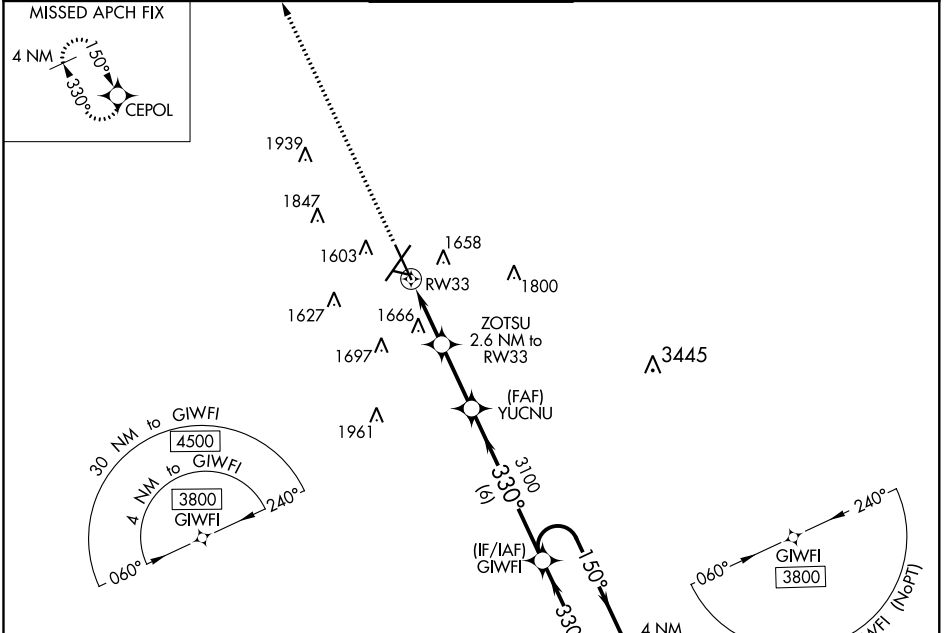
RNAV (GPS) RWY 33

JOE FOSS FIELD (F'SD)

ASR For uncompensated Baro-VNAV systems, procedure NA below -22°C (-7°F) or above 54°C (130°F). Rwy 33 helicopter visibility reduction below ¼ SM NA. DME/DME RNP-0.3 NA.

MISSED APPROACH: Climb to 3800 direct CEPOL and hold.

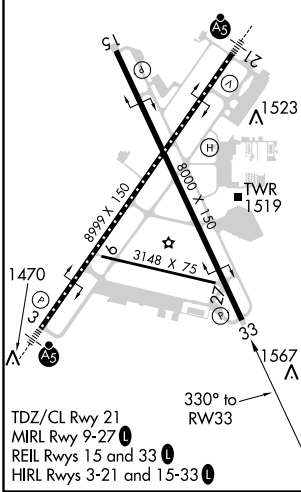
ATIS 126.6	SIoux FALLS APP CON * 125.8 284.725	SIoux FALLS TOWER * 118.3(CTAF) 257.8	GND CON 121.9 348.6	UNICOM 122.95
----------------------	---	---	-------------------------------	-------------------------



NC-1, 31 JAN 2019 to 28 FEB 2019

NC-1, 31 JAN 2019 to 28 FEB 2019

ELEV 1430	D	TDZE 1424
-----------	----------	-----------



3800	CEPOL	*LNAV only.	ZOTSU 2.6 NM to RW33	YUCNU 3100	GIWFI	4 NM Holding Pattern
			*1.4 NM to RW33			
						GP 3.00° TCH 45
CATEGORY	A	B	C	D		
LPV DA	1729-1		305 (300-1)			
LNAV/VNAV DA	1974-1½		550 (600-1½)			
LNAV MDA	1920-1		496 (500-1)		1920-1¾ 496 (500-1¾)	
C CIRCLING	1960-1	1980-1	2060-1¾	2200-2½	530 (600-1) 550 (600-1) 630 (700-1¾) 770 (800-2½)	