

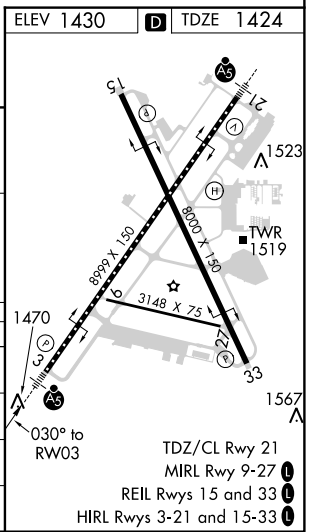
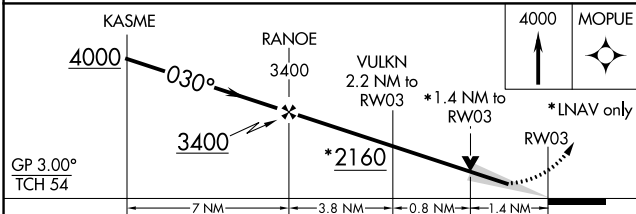
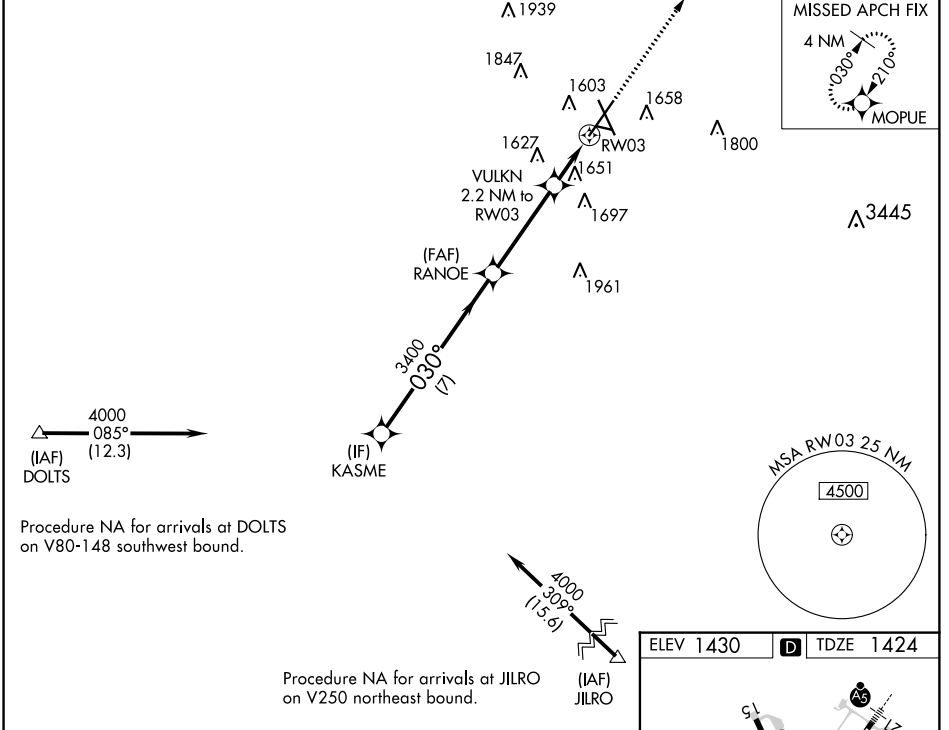
WAAS CH 97722 W03A	APP CRS 030°	Rwy Idg TDZE Apt Elev	8999 1424 1430
--	------------------------	-----------------------------	---

RNAV (GPS) RWY 3

JOE FOSS FIELD (FSD)

RNP APCH.	MALSR	MISSED APPROACH: Climb to 4000 direct MOPUE and hold.
ASR	For uncompensated Baro-VNAV systems, LNAV/VNAV NA below -17°C (2°F) or above 54°C (130°F). For inop ALS, increase LNAV/VNAV all Cats visibility to RVR 4500 and LNAV Cats C/D visibility to 1 3/8 SM.	

ATIS 126.6	SIoux FALLS APP CON* 125.8 284.725	SIoux FALLS TOWER* 118.3 (CTAF) 257.8	GND CON 121.9 348.6	UNICOM 122.95
----------------------	--	---	-------------------------------	-------------------------



CATEGORY	A	B	C	D
LPV DA		1674/24	250 (300-1/2)	
LNAV/VNAV DA		1726/24	302 (300-1/2)	
LNAV MDA	1920/24	496 (500-1/2)	1920/50	496 (500-1)
CIRCLING	1980-1	550 (600-1)	1980-1 1/2 550 (600-1 1/2)	2040-2 610 (700-2)

NC-1, 31 JAN 2019 to 28 FEB 2019

NC-1, 31 JAN 2019 to 28 FEB 2019