

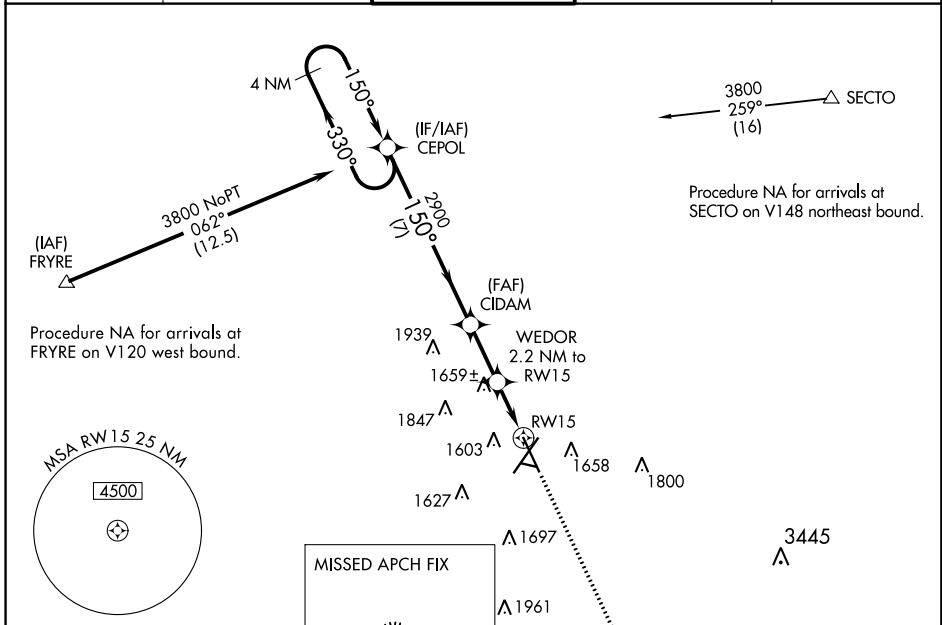
WAAS CH 90235 W15A	APP CRS 150°	Rwy Idg TDZE 1429 Apt Elev 1430	8000 1429 1430
--	------------------------	---	---

RNAV (GPS) RWY 15

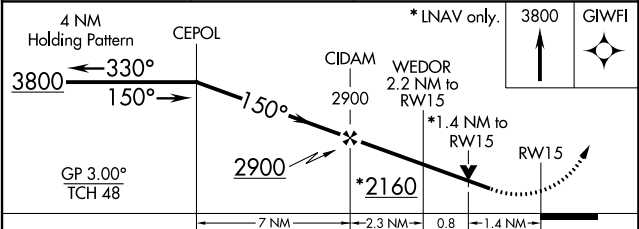
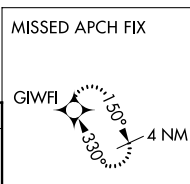
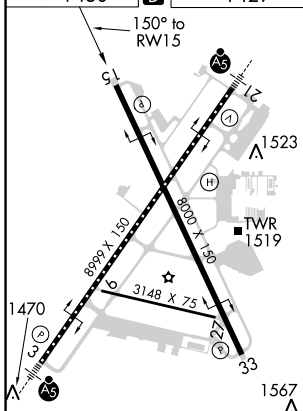
JOE FOSS FIELD (FSD)

<p>▽ For uncompensated Baro-VNAV systems, LNAV/VNAV NA below -21°C (-5°F) or above 54°C (130°F). DME/DME RNP-0.3 NA. Helicopter visibility reduction below ¾ SM not authorized.</p> <p>▲ ASR</p>	<p>MISSED APPROACH: Climb to 3800 direct GIWFI and hold.</p>
--	---

ATIS 126.6	SIoux FALLS APP CON * 125.8 284.725	SIoux FALLS TOWER * 118.3 (CTAF) 0 257.8	GND CON 121.9 348.6	UNICOM 122.95
----------------------	---	--	-------------------------------	-------------------------



ELEV 1430 **D** TDZE 1429



CATEGORY	A	B	C	D
LPV DA		1839-1 $\frac{3}{8}$	410 (500-1 $\frac{3}{8}$)	
LNAV/VNAV DA		1906-1 $\frac{5}{8}$	477 (500-1 $\frac{5}{8}$)	
LNAV MDA	1920-1 491 (500-1)		1920-1 $\frac{3}{8}$ 491 (500-1 $\frac{3}{8}$)	
C CIRCLING	1980-1 550 (600-1)		2200-2 $\frac{1}{4}$ 770 (800-2 $\frac{1}{4}$)	2200-2 $\frac{1}{2}$ 770 (800-2 $\frac{1}{2}$)

NC-1, 31 JAN 2019 to 28 FEB 2019

NC-1, 31 JAN 2019 to 28 FEB 2019