

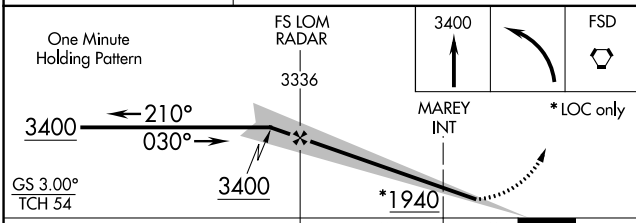
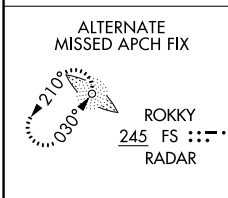
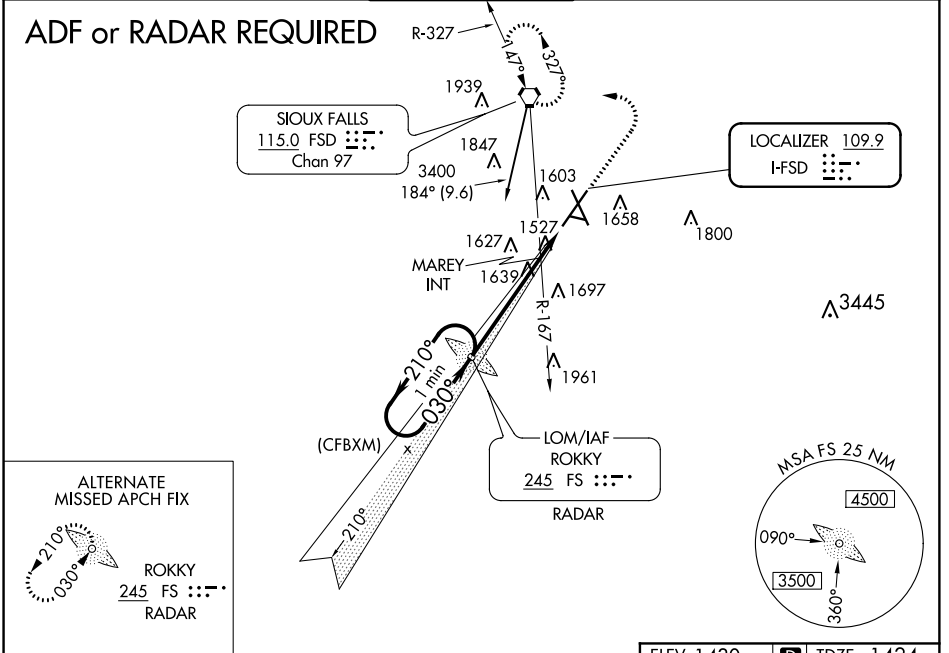
LOC I-FSD 109.9	APP CRS 030°	Rwy Idg TDZE Apt Elev	8999 1424 1430
---------------------------	------------------------	-----------------------------	---

ILS or LOC RWY 3

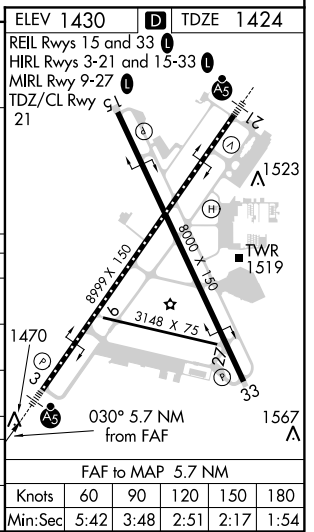
JOE FOSS FIELD (FSD)

	MALSR	MISSED APPROACH: Climb to 3400 then left turn direct FSD VORTAC and hold.

ATIS 126.6	SIoux FALLS APP CON* 125.8 284.725	SIoux FALLS TOWER* 118.3 (CTAF) 0 257.8	GND CON 121.9 348.6	UNICOM 122.95
----------------------	--	---	-------------------------------	-------------------------



CATEGORY	A	B	C	D
S-ILS 3	1674/24 250 (300-½)			
S-LOC 3	1940/24	516 (600-½)	1940/55	516 (600-1)
CIRCLING	1980-1	550 (600-1)	1980-1½ 550 (600-1½)	2040-2 610 (700-2)
MAREY FIX MINIMUMS (DUAL VOR RECEIVERS REQUIRED)				
S-LOC 3	1800/24	376 (400-½)	1800/35	376 (400-¾)
CIRCLING	1980-1	550 (600-1)	1980-1½ 550 (600-1½)	2040-2 610 (700-2)



NC-1, 31 JAN 2019 to 28 FEB 2019

NC-1, 31 JAN 2019 to 28 FEB 2019