

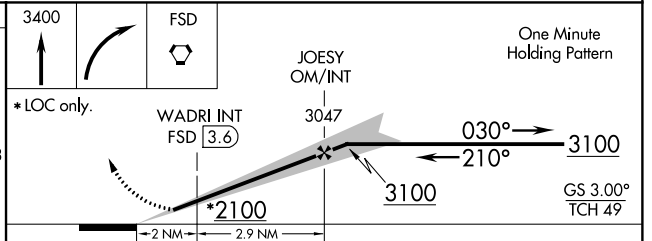
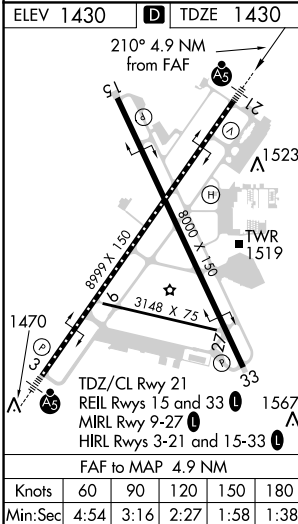
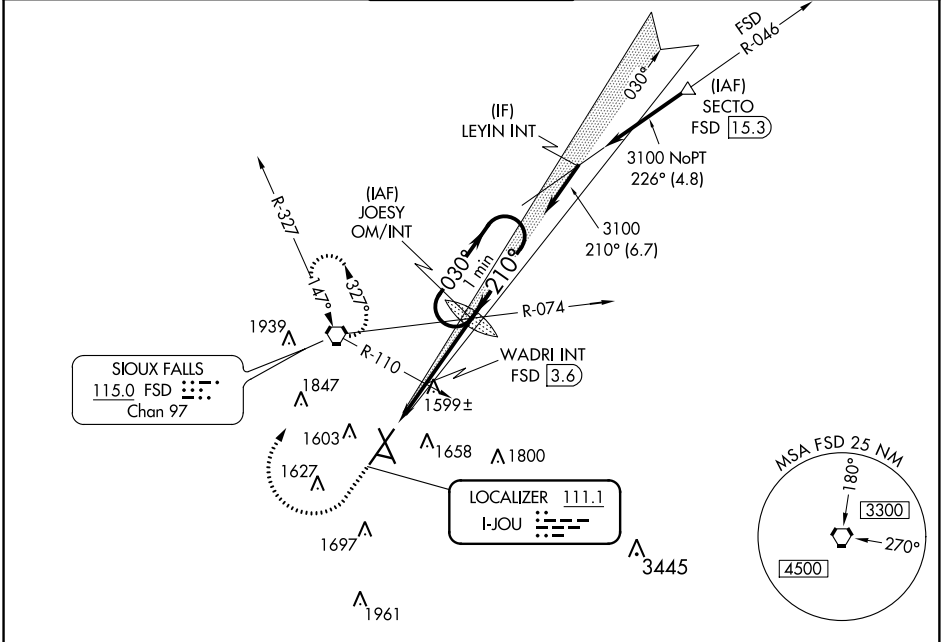
LOC I-JOU <b>111.1</b>	APP CRS <b>210°</b>	Rwy Idg <b>8999</b> TDZE <b>1430</b> Apt Elev <b>1430</b>
---------------------------	------------------------	---

# ILS or LOC RWY 21

JOE FOSS FIELD (FSD)

<b>ASR</b>	For inoperative MALSR increase S-ILS all Cats visibility to 3/4 mile, increase S-LOC 21 Cat C/D visibility to 1/2 mile. When using WADRI FIX minimums, increase S-LOC 21 Cat C/D visibility to 1 mile.	<b>MALSR</b> 	<b>MISSED APPROACH:</b> Climb to 3400 then right turn direct FSD VORTAC and hold.
------------	--	------------------	--

<b>ATIS</b> <b>126.6</b>	<b>SIoux FALLS APP CON*</b> <b>125.8 284.725</b>	<b>SIoux FALLS TOWER*</b> <b>118.3 (CTAF) 0 257.8</b>	<b>GND CON</b> <b>121.9 348.6</b>	<b>UNICOM</b> <b>122.95</b>
-----------------------------	---	--	--------------------------------------	--------------------------------



CATEGORY	A	B	C	D
S-ILS 21	1630/18 200 (200-1/2)			
S-LOC 21	2100/24	670 (700-1/2)	2100-1 1/2	670 (700-1 1/2)
CIRCLING	2100-1	670 (700-1)	2100-1 7/8	2100-2
			670 (700-1 7/8)	670 (700-2)
WADRI FIX MINIMUMS				
S-LOC 21	1800/24	370 (400-1/2)	1800/35	370 (400-3/8)
CIRCLING	1980-1	550 (600-1)	1980-1 1/2	2040-2
			550 (600-1 1/2)	610 (700-2)

NC-1, 31 JAN 2019 to 28 FEB 2019

NC-1, 31 JAN 2019 to 28 FEB 2019