

SIoux FALLS, SOUTH DAKOTA

HI-TACAN RWY 15

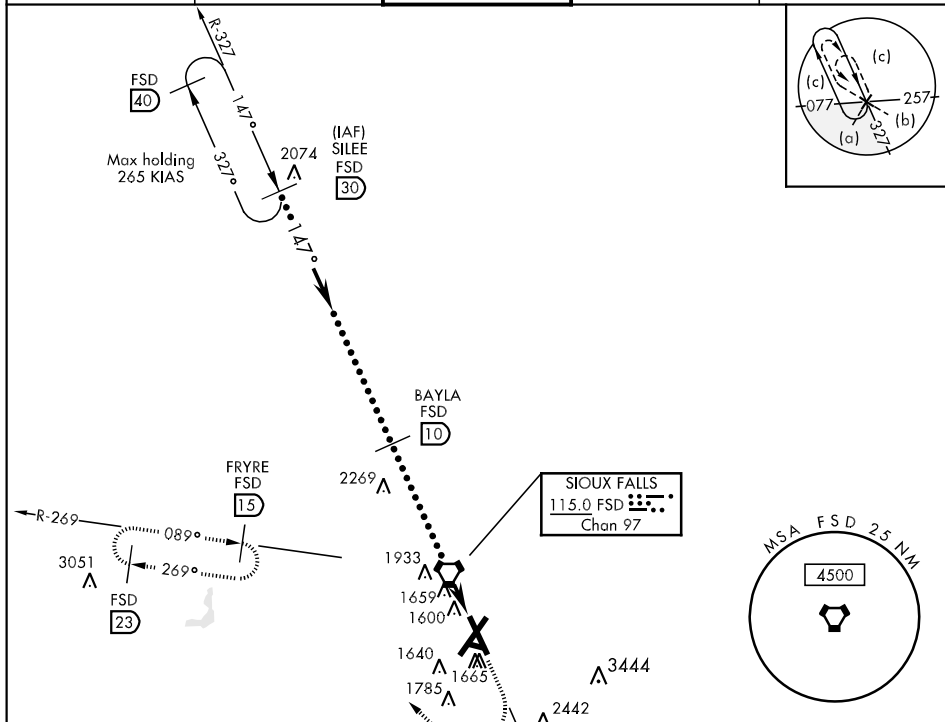
VORTAC FSD 115.0 Chan 97	APCH CRS 147°	Rwy ldg 8000 THRE 1429 Arpt Elev 1430
--	-------------------------	--

JAL-396 [USAF]

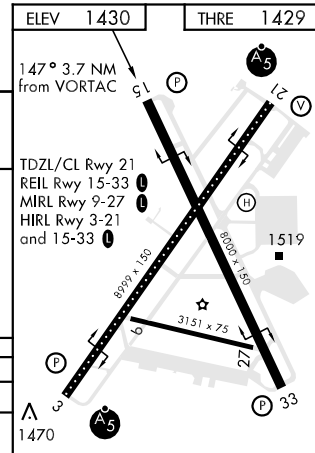
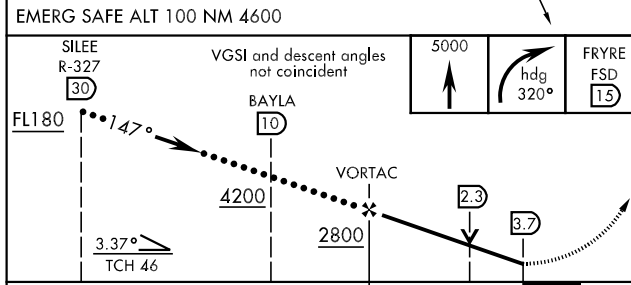
SIoux FALLS/JOE FOSS FIELD (KFSD)

▽ MISSED APPROACH: Climb to 5000 then right turn via heading 320° and FSD R-269 to FRYRE 15 DME and hold.

ATIS 126.6	SIoux FALLS APP CON 125.8 126.9 353.6	SIoux FALLS TOWER ★ 118.30 257.8	GND CON 121.9 348.6	ASR
----------------------	---	--	-------------------------------	-----



EMERG SAFE ALT 100 NM 4600



CATEGORY	C	D	E
S-15	1920-1 $\frac{3}{8}$	491	(500-1 $\frac{3}{8}$)
CIRCLING	1980-1 $\frac{1}{2}$ 550 (600-1 $\frac{1}{2}$)	2040-2 610 (700-2)	2300-3 870 (900-3)

SIoux FALLS, SOUTH DAKOTA
Amdt 8B 22AUG13

43° 35' N-96° 44' W

SIoux FALLS/ JOE FOSS FIELD (KFSD)

HI-TACAN RWY 15

NC-1, 31 JAN 2019 to 28 FEB 2019

NC-1, 31 JAN 2019 to 28 FEB 2019