


VORTAC SUX <b>116.5</b> Chan <b>112</b>	APP CRS <b>131°</b>	Rwy Idg TDZE Apt Elev	<b>9002</b> <b>1095</b> <b>1098</b>
---	------------------------	-----------------------------	---

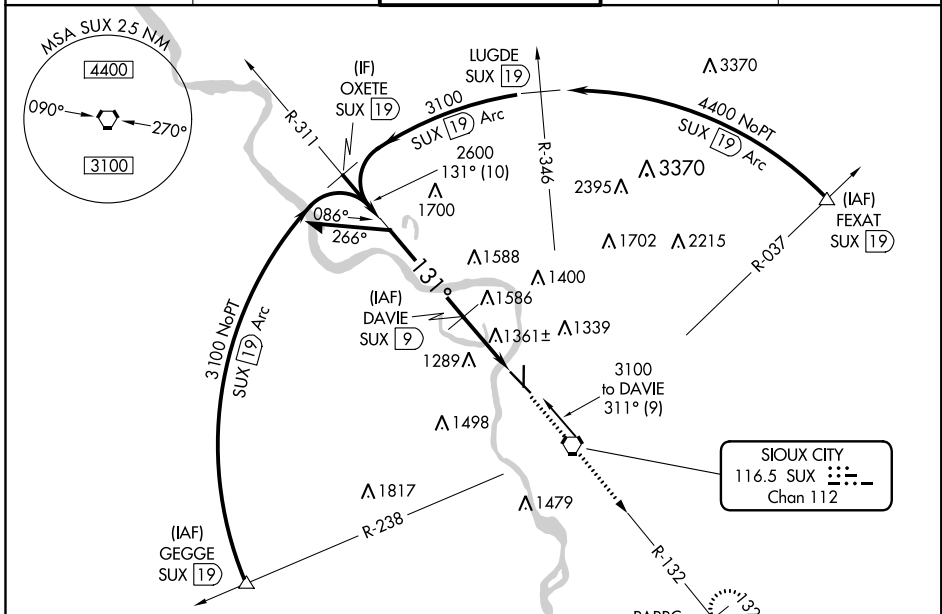
# VOR/DME or TACAN RWY 13

SIoux GATEWAY/COLONEL BUD DAY FIELD (SUX)

**⚠** When local altimeter setting not received, use Le Mars altimeter setting and increase all MDA 80 feet, and increase S-13 Cat C/D/E visibility 1/8 mile and Circling Cat C/D visibility 1/4 mile. For inop MALS, increase S-13 Cat C/D/E visibility to 1 1/2 mile. For inop MALS when using Le Mars altimeter setting increase S-13 Cat C/D visibility to 1 3/4 mile. VDP NA when using Le Mars altimeter setting.

**MALS**  
 MISSED APPROACH: Climb to 3000 direct SUX VORTAC then via SUX R-132 to PARRC/12 DME and hold.

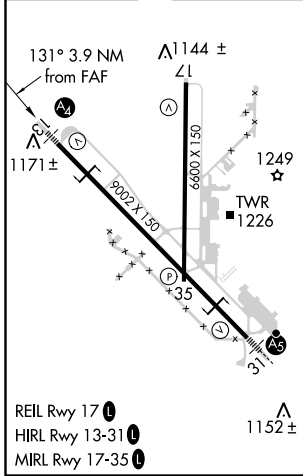
ATIS <b>119.45 270.8</b>	SIoux CITY APP CON * <b>124.6 307.0</b>	SIoux CITY TOWER * <b>118.7 (CTAF) 254.3</b>	GND CON <b>121.9 348.6</b>	UNICOM <b>122.95</b>
-----------------------------	--	---	-------------------------------	-------------------------



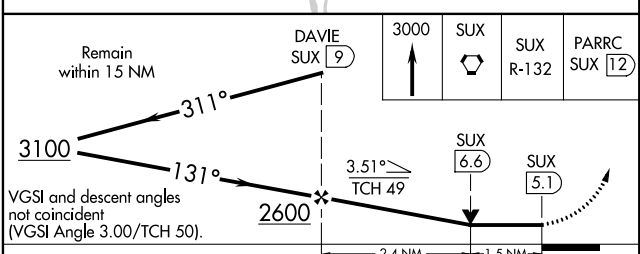
NC-3, 31 JAN 2019 to 28 FEB 2019

NC-3, 31 JAN 2019 to 28 FEB 2019

ELEV 1098	<b>D</b> TDZE 1095
-----------	--------------------



REIL Rwy 17 **Ⓛ**  
 HIRL Rwy 13-31 **Ⓛ**  
 MIRL Rwy 17-35 **Ⓛ**



CATEGORY	A	B	C	D	E
S-13	1620/40	525 (600-34)	1620-1 1/4 525 (600-1 1/4)		
<b>C</b> CIRCLING	1640-1 542 (600-1)	1700-1 602 (700-1)	1700-1 3/4 602 (700-1 3/4)	1840-2 1/2 742 (800-2 1/2)	2000-3 902 (1000-3)

SIoux CITY, IOWA  
Amdt 18C 05FEB15

42°24'N-96°23'W

# SIoux GATEWAY/COLONEL BUD DAY FIELD (SUX) VOR/DME or TACAN RWY 13