

WAAS CH 61238 W35A	APP CRS 358°	Rwy Idg TDZE 1096 Apt Elev 1098
--	------------------------	---

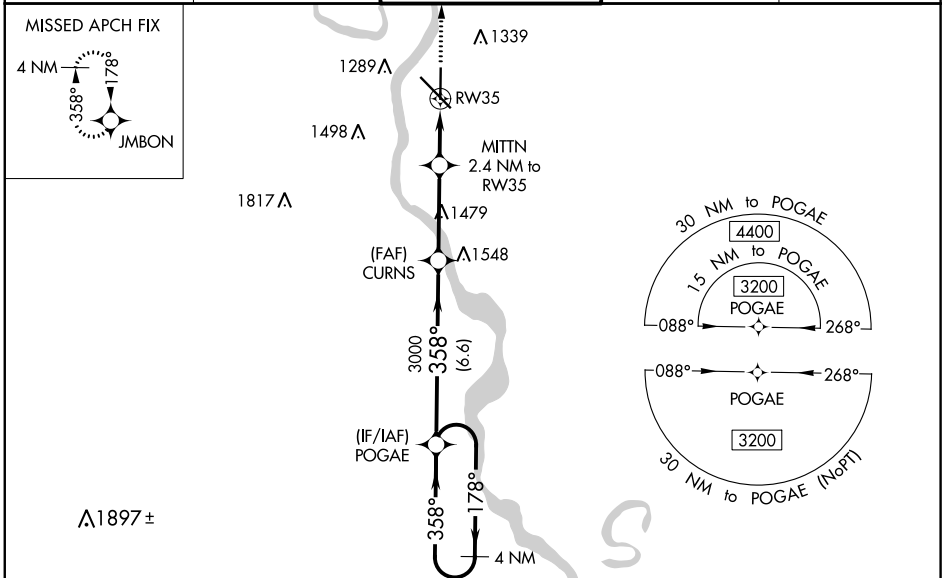
RNAV (GPS) RWY 35

SIOW GATEWAY/COLONEL BUD DAY FIELD (SU_X)

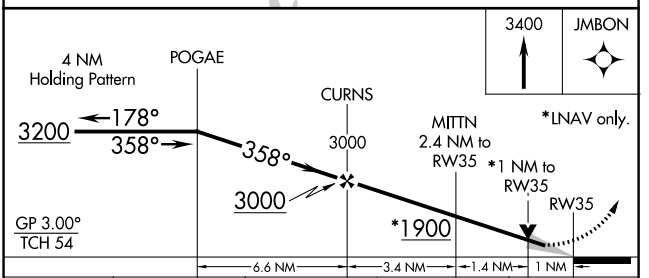
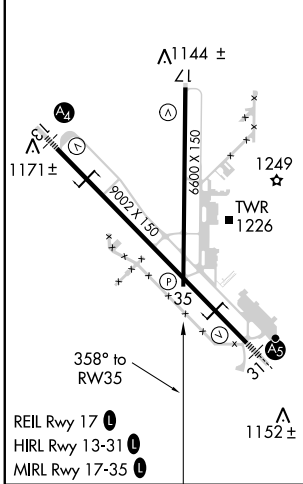
⚠ For uncompensated Baro-VNAV systems, LNAV/VNAV NA below -20°C (-4°F) or above 54°C (130°F). Baro-VNAV and VDP NA when using Le Mars altimeter setting. DME/DME RNP-0.3 NA. When local altimeter setting not received, use Le Mars altimeter setting and increase all DA 70 feet and LPV and LNAV/VNAV visibility ¼ mile, increase all MDA 80 feet and LNAV Cats C/D visibility ⅜ mile and Circling Cat C/D visibility ¼ mile.

MISSED APPROACH: Climb to 3400 direct JMBON and hold.

ATIS 119.45 270.8	SIOW CITY APP CON * 124.6 307.0	SIOW CITY TOWER * 118.7 (CTAF) 254.3	GND CON 121.9 348.6	UNICOM 122.95
-----------------------------	---	--	-------------------------------	-------------------------



ELEV 1098	D	TDZE 1096
-----------	----------	-----------



CATEGORY	A	B	C	D
LPV DA		1346-3/4	250 (300-3/4)	
LNAV/VNAV DA		1362-7/8	266 (300-7/8)	
LNAV MDA		1460-1	364 (400-1)	
C CIRCLING	1640-1 542 (600-1)	1700-1 602 (700-1)	1700-1 3/4 602 (700-1 3/4)	1840-2 1/2 742 (800-2 1/2)

NC-3, 31 JAN 2019 to 28 FEB 2019

NC-3, 31 JAN 2019 to 28 FEB 2019