

WAAS CH 90211 W31A	APP CRS 313°	Rwy Idg TDZE Apt Elev	9002 1096 1098
--	------------------------	-----------------------------	---

RNAV (GPS) RWY 31

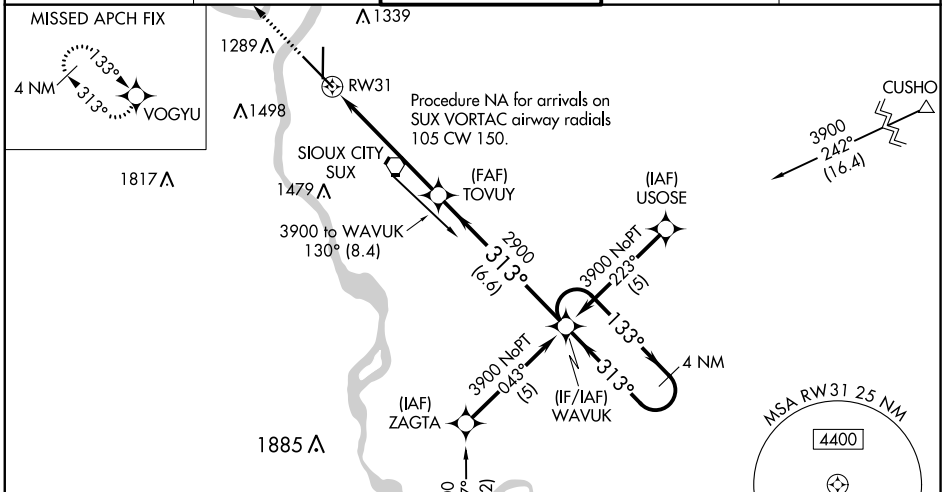
SIoux GATEWAY/COLONEL BUD DAY FIELD (SUx)

▼ For uncompensated Baro-VNAV systems, LNAV/VNAV NA below -21°C (-5°F) or above 54°C (130°F). DME/DME RNP-0.3 NA. When local altimeter setting not received, use Le Mars altimeter setting and increase all DA 70 feet and all MDA 80 feet, increase LNAV/VNAV all Cats visibility to 1½ miles and LNAV Cats C/D/E visibility to RVR 6000, increase Circling Cats C/D visibility ½ mile. For inop MALS R increase LPV Cat E visibility to RVR 4000; increase LNAV/VNAV Cat E visibility to 1½ miles and LNAV Cats C/D/E visibility to 1¾ mile. For inop MALS R, when using Le Mars altimeter setting, increase LPV all Cats visibility to RVR 4500; increase LNAV/VNAV Cat E visibility to 2 miles; increase LNAV Cat E visibility to 1¾ mile. VDP and Baro-VNAV NA when using Le Mars altimeter setting. ** RVR 1800 authorized with use of FD or AP or HUD to DA, NA when using Le Mars altimeter setting.

MALS R

MISSED APPROACH:
Climb to 3500 direct VOGYU and hold.

ATIS 119.45 270.8	SIoux CITY APP CON * 124.6 307.0	SIoux CITY TOWER * 118.7 (CTAF) 0 254.3	GND CON 121.9 348.6	UNICOM 122.95
-----------------------------	--	---	-------------------------------	-------------------------



ELEV 1098 **D** TDZE 1096

REIL Rwy 17 **Ⓛ**
HIRL Rwy 13-31 **Ⓛ**
MIRL Rwy 17-35 **Ⓛ**

3500 **VOGYU** VGSI and RNAV glidepath not coincident (VGSI Angle 3.00/TCH 55). **4 NM Holding Pattern**

*LNAV only. *1.3 NM to RW31

TOVUY 2900

313° 3900

GP 3.00° TCH 43

1.3 NM 4.2 NM 6.6 NM

CATEGORY	A	B	C	D	E
LPV DA **	1296/24		200 (200-½)		
LNAV/VNAV DA	1596-1¼		500 (500-1¼)		
LNAV MDA	1560/24 464 (500-½)		1560/50 464 (500-1)		
C CIRCLING	1640-1 542 (600-1)	1700-1 602 (700-1)	1700-1¾ 602 (700-1¼)	1840-2½ 742 (800-2½)	2000-3 902 (1000-3)

NC-3, 31 JAN 2019 to 28 FEB 2019

NC-3, 31 JAN 2019 to 28 FEB 2019