


WAAS CH 57911 W13A	APP CRS 133°	Rwy ldg TDZE Apt Elev	9002 1095 1098
--	------------------------	-----------------------------	---

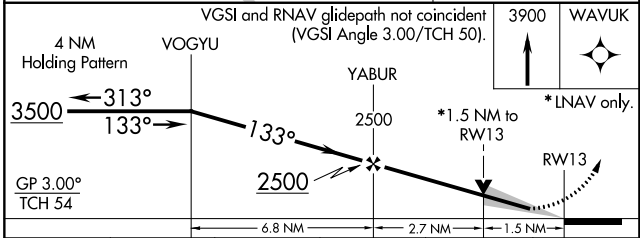
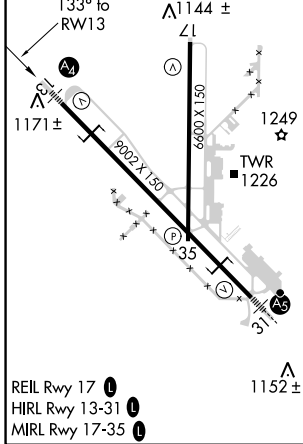
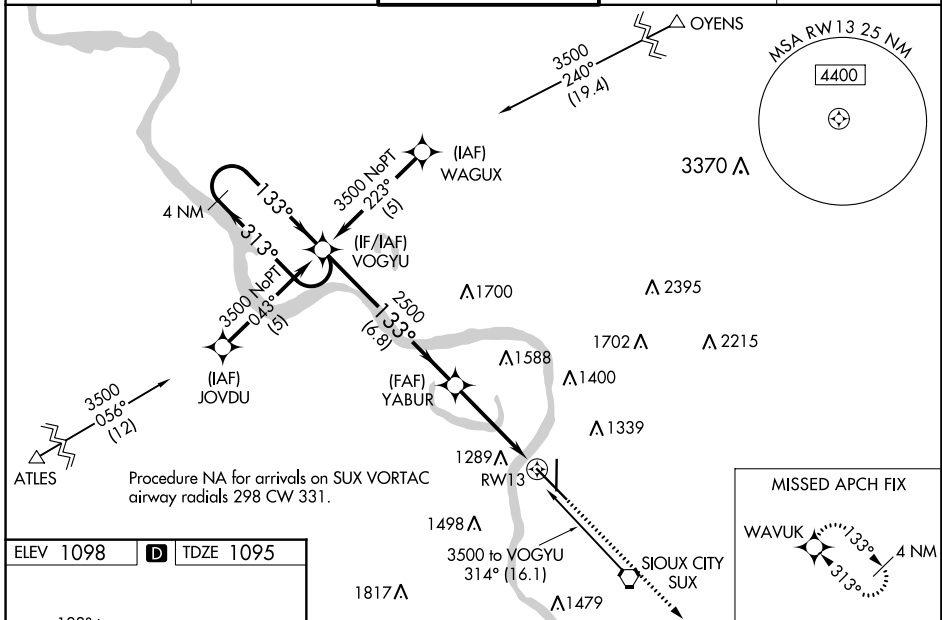
RNAV (GPS) RWY 13

SIoux GATEWAY/COLONEL BUD DAY FIELD (SUX)

⚠ Inop table does not apply to LPV all Cats. For uncompensated Baro-VNAV systems, LNAV/VNAV NA below -20°C (-4°F) or above 54°C (130°F). Baro-VNAV and VDP NA when using Le Mars altimeter setting. DME/DME RNP-0.3 NA. When local altimeter setting not received, use Le Mars altimeter setting and increase all DA 70 feet and all MDA 80 feet, increase LNAV/VNAV all Cats and LNAV Cats C/D/E visibility 1/4 mile, increase Circling Cat C/D visibility 1/4 mile. For inop MALS, increase LNAV/VNAV Cat D/E visibility to 1 1/8 mile and LNAV Cat D/E visibility to 1 1/2 mile. When using Le Mars altimeter setting increase LPV all Cats visibility to RVR 4500, LNAV/VNAV Cats C/D/E visibility to 1 7/8, and LNAV Cats C/D/E visibility to 1 3/4.

MALS

MISSED APPROACH:
 Climb to 3900 direct WAVUK and hold.

ATIS 119.45 270.8	SIoux CITY APP CON * 124.6 307.0	SIoux CITY TOWER * 118.7 (CTAF) 0 254.3	GND CON 121.9 348.6	UNICOM 122.95
-----------------------------	--	---	-------------------------------	-------------------------



CATEGORY	A	B	C	D	E
LPV DA		1295/40	200 (200-3/4)		
LNAV/VNAV DA		1582-1 3/8	487 (500-1 3/8)		
LNAV MDA	1620/40	525 (600-3/4)	1620-1 1/4	525 (600-1 1/4)	
C CIRCLING	1640-1 542 (600-1)	1700-1 602 (700-1)	1700-1 3/4 602 (700-1 3/4)	1840-2 1/2 742 (800-2 1/2)	2000-3 902 (1000-3)

NC-3, 31 JAN 2019 to 28 FEB 2019

NC-3, 31 JAN 2019 to 28 FEB 2019