


LOC I-OIQ <b>111.3</b>	APP CRS <b>133°</b>	Rwy Idg TDZE Apt Elev	<b>9002</b> <b>1095</b> <b>1098</b>
---------------------------	------------------------	-----------------------------	---

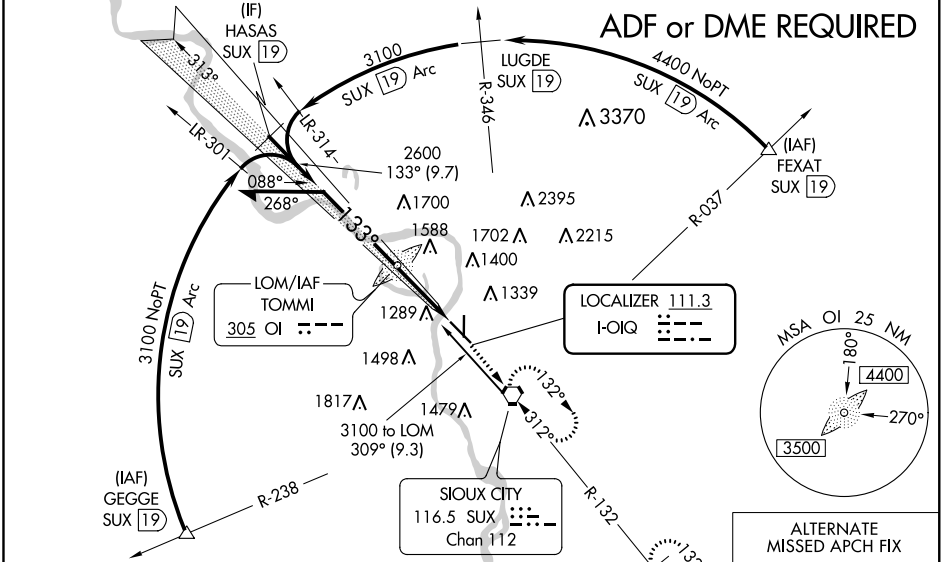
# ILS or LOC RWY 13

SIoux GATEWAY/COLONEL BUD DAY FIELD (SUX)

**⚠** When local altimeter setting not received, use Le Mars altimeter setting: increase all DA 70 feet and all MDA 80 feet; increase S-LOC 13 Cats C/D/E visibility to 1 3/8 mile; increase Circling Cat C visibility to 2 miles, Cat D to 2 3/4 mile. For inop MALS increase S-LOC 13 Cats C/D/E visibility to 1 3/8 mile. Inop table does not apply to S-ILS 13 all Cats. For inop MALS when using Le Mars altimeter setting, increase S-ILS 13 all Cats visibility to RVR 4500 and S-LOC 13 Cats C/D/E to 1 3/8 mile.

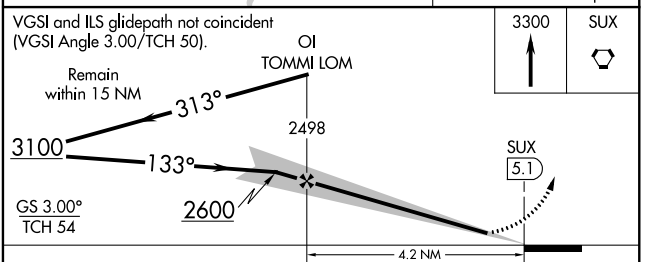
**MALS**  

**MISSED APPROACH:** Climb to 3300 direct SUX VORTAC and hold, continue climb-in-hold to 3300 (TACAN aircraft continue on SUX VORTAC R-132 to PARRC/12 DME and hold southeast, right turn, 312° inbound).

ATIS <b>119.45 270.8</b>	SIoux CITY APP CON* <b>124.6 307.0</b>	SIoux CITY TOWER* <b>118.7 (CTAF) 0 254.3</b>	GND CON <b>121.9 348.6</b>	UNICOM <b>122.95</b>
-----------------------------	---	--	-------------------------------	-------------------------



ELEV 1098	<b>D</b>	TDZE 1095
-----------	----------	-----------

133° 4.2 NM from FAF  
 1171 ±  
 1249  
 TW R 1226  
 6600 x 150  
 8002 x 150  
 1152 ±



REIL Rwy 17  
 HIRL Rwy 13-31  
 MIRL Rwy 17-35

FAF to MAP 4.2 NM

Knots	60	90	120	150	180
Min:Sec	4:12	2:48	2:06	1:41	1:24

CATEGORY	A	B	C	D	E
S-ILS 13	1295/40 200 (200-3/4)				
S-LOC 13	1580/40	485 (500-3/4)	1580/60 485 (500-1/4)		
<b>C</b> CIRCLING	1640-1 542 (600-1)	1700-1 602 (700-1)	1700-3/4 602 (700-1 3/4)	1840-2 1/2 742 (800-2 1/2)	2000-3 902 (1000-3)

NC-3, 31 JAN 2019 to 28 FEB 2019

NC-3, 31 JAN 2019 to 28 FEB 2019