

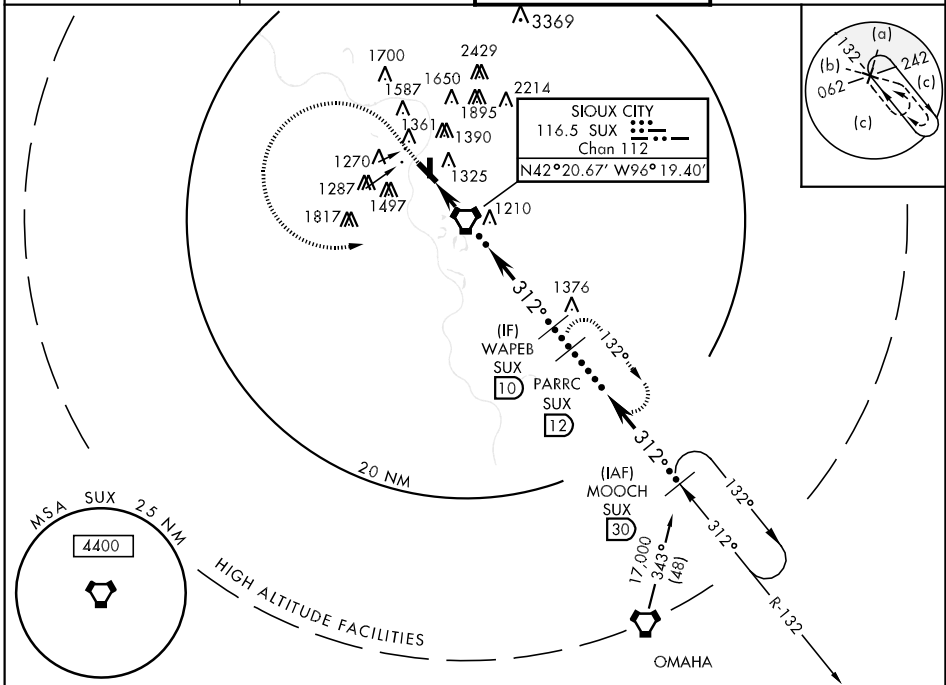
HI-VOR/DME or TACAN RWY 31

VORTAC SUX 116.5 Chan 112	APCH CRS 312°	Rwy Idg THRE 1093 Arpt Elev 1098	JAL-395 [USAF]	SIoux GATEWAY/COL. BUD DAY FIELD (KSUX)
---------------------------------	------------------	--	----------------	---

▼ * When ALS inop, increase CAT CDE vis to 1½ miles.
 ** When ALS inop, increase CAT CDE vis to 1¾ miles.
 When local altimeter not received use, Le Mars altimeter.

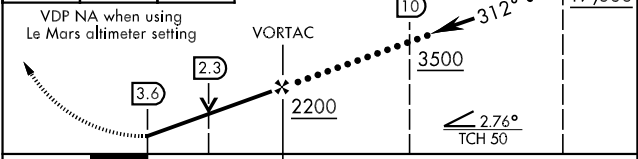
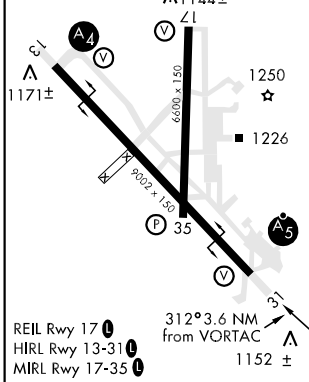
A5 MALSR
 MISSED APPROACH: Climb to 1600, then climbing left turn to 3000 direct SUX VORTAC, then via SUX R-132 to PARRC (SUX 12 DME) and hold.

ATIS 119.45 277.2	SIoux CITY APP CON 124.6 307.0	SIoux CITY TOWER ★ 118.7 (CTAF) 254.3	GND CON 121.9 348.6
----------------------	-----------------------------------	--	------------------------



EMERG SAFE ALT 100 NM FROM "SUX" VORTAC 4800

ELEV 1098	THRE 1093	1600	3000	PARRC SUX 12	VGSI and descent angles not coincident	MOOCH 30
-----------	-----------	------	------	--------------	--	----------



CATEGORY	C	D	E
S-31 *	1560/50	467 (500-1)	
C CIRCLING	1700-1¾ 602 (700-1¾)	1840-2½ 742 (800-2½)	2000-3 902 (1000-3)
LE MARS ALTIMETER SETTING			
S-31 **	1640/60	547 (600-1½)	
C CIRCLING	1780-2¼ 682 (700-2¼)	1920-2¾ 822 (900-2¾)	2080-3 982 (1000-3)

HI-VOR/DME or TACAN RWY 31

NC-3, 31 JAN 2019 to 28 FEB 2019

NC-3, 31 JAN 2019 to 28 FEB 2019