

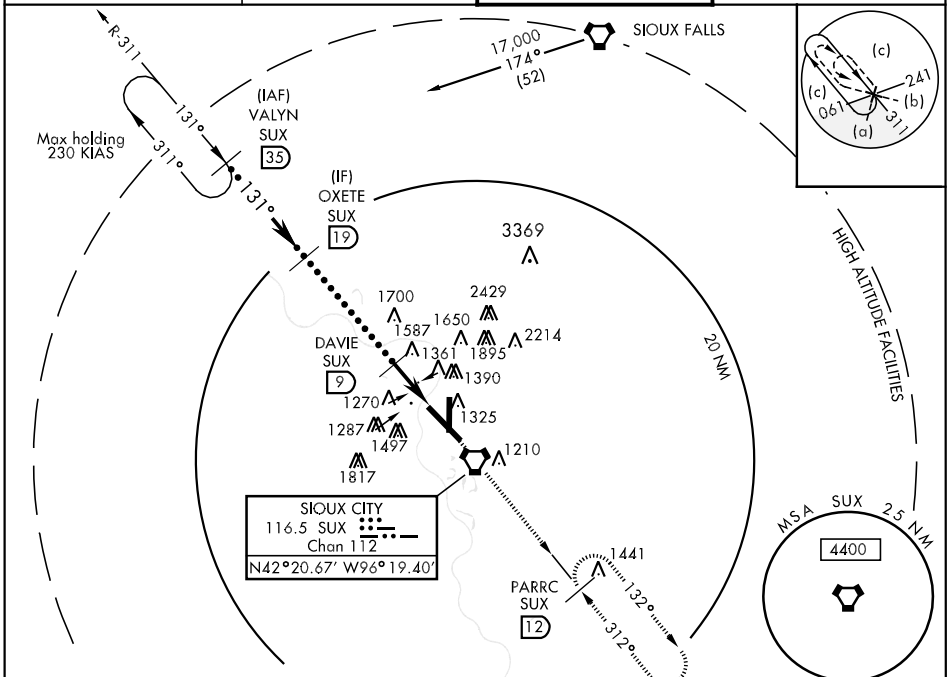
HI-VOR/DME or TACAN RWY 13

VORTAC SUX 116.5 Chan 112	APCH CRS 131°	Rwy Idg THRE 1093 Arpt Elev 1098	JAL-395 [USAF]	SIoux GATEWAY/COL. BUD DAY FIELD (KSUX)
---------------------------------	------------------	--	----------------	---

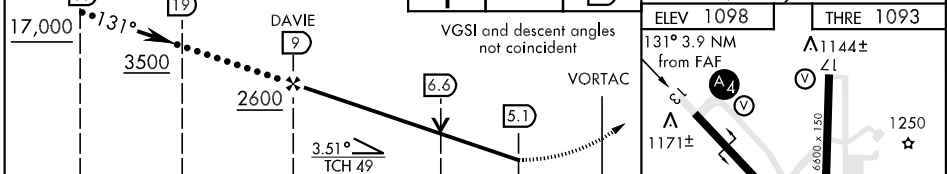
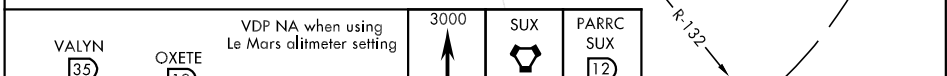
M * When ALS inop, increase CAT CDE vis to 1½ miles.
****** When ALS inop, increase CAT CDE vis to 1¾ miles.
 When local altimeter not received use, Le Mars altimeter.

MALS **A4** MISSED APPROACH: Climb to 3000 direct SUX VORTAC, then via SUX R-132 to PARRC (SUX 12 DME) and hold.

ATIS 119.45 277.2	SIoux CITY APP CON 124.6 307.0	SIoux CITY TOWER * 118.7 (CTAF) 254.3	GND CON 121.9 348.6
----------------------	-----------------------------------	--	------------------------



EMERG SAFE ALT 100 NM FROM "SUX" VORTAC 4800



CATEGORY	C	D	E
S-13*	1620-1¼	527 (600-1¼)	
C CIRCLING	1700-1¾ 602 (700-1¾)	1840-2½ 742 (800-2½)	2000-3 902 (1000-3)
LE MARS ALTIMETER SETTING			
S-13**	1700-1½	607 (700-1½)	
C CIRCLING	1780-2¼ 682 (700-2¼)	1920-2¾ 822 (900-2¾)	2080-3 982 (1000-3)

HI-VOR/DME or TACAN RWY 13

NC-3, 31 JAN 2019 to 28 FEB 2019

NC-3, 31 JAN 2019 to 28 FEB 2019