

WAAS CH <b>69435</b> W15A	APP CRS <b>149°</b>	Rwy Idg TDZE <b>166</b> Apt Elev <b>166</b>	<b>8014</b>
---------------------------------	------------------------	---	-------------

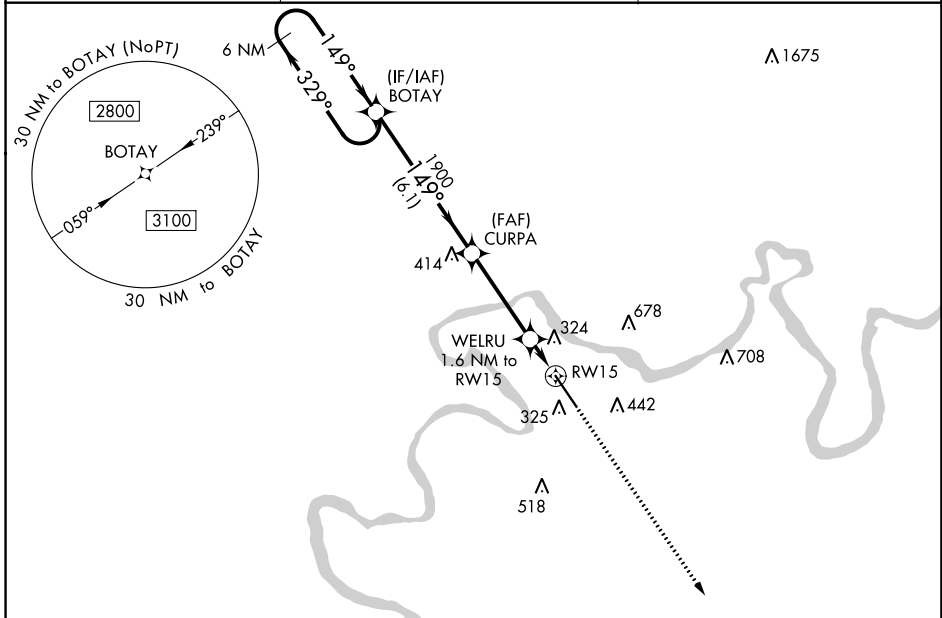
# RNAV (GPS) RWY 15

CRAIG FIELD (SEM)

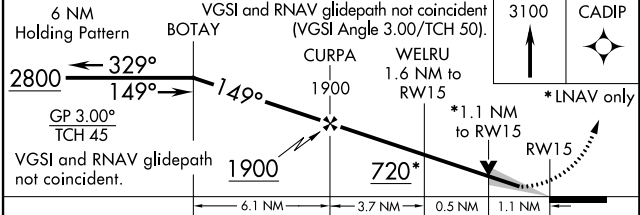
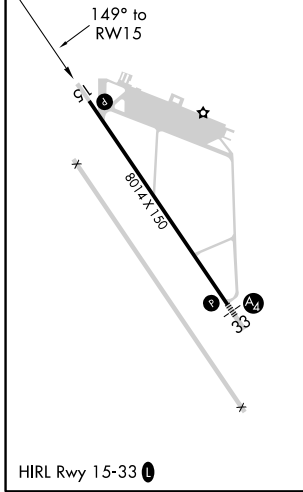
**▼** Baro-VNAV NA when using Montgomery altimeter setting. For uncompensated Baro-VNAV systems, LNAV/VNAV NA below -15°C (5°F) or above 54°C (130°F). DME/DME RNP-0.3 NA. VDP NA with Montgomery altimeter setting. When local altimeter setting not received, use Montgomery altimeter setting and increase all DA 78 feet, all MDA 80 feet, LPV all Cats visibility 3/8 mile, LNAV/VNAV all Cats visibility and LNAV Cats C and D visibility 1/4 mile, Circling Cat C visibility 1/2 mile and Cat D visibility 1/2 mile.

**▲** MISSED APPROACH: Climb to 3100 direct CADIP and hold.

AWOS-3PT <b>119.15</b>	MONTGOMERY APP CON ★ <b>124.0 363,025</b>	UNICOM <b>122.7 (CTAF) 0</b>
---------------------------	--	---------------------------------



ELEV <b>166</b>	TDZE <b>166</b>
-----------------	-----------------



CATEGORY	A	B	C	D
LPV DA		416-3/4	250 (300-3/4)	
LNAV/VNAV DA		569-1 3/8	403 (500-1 1/8)	
LNAV MDA	560-1	394 (400-1)	560-1 1/8	394 (400-1 1/8)
<b>C</b> CIRCLING	660-1 494 (500-1)	760-1 594 (600-1)	760-1 1/2 594 (600-1 1/2)	1040-2 3/4 874 (900-2 3/4)