

19003

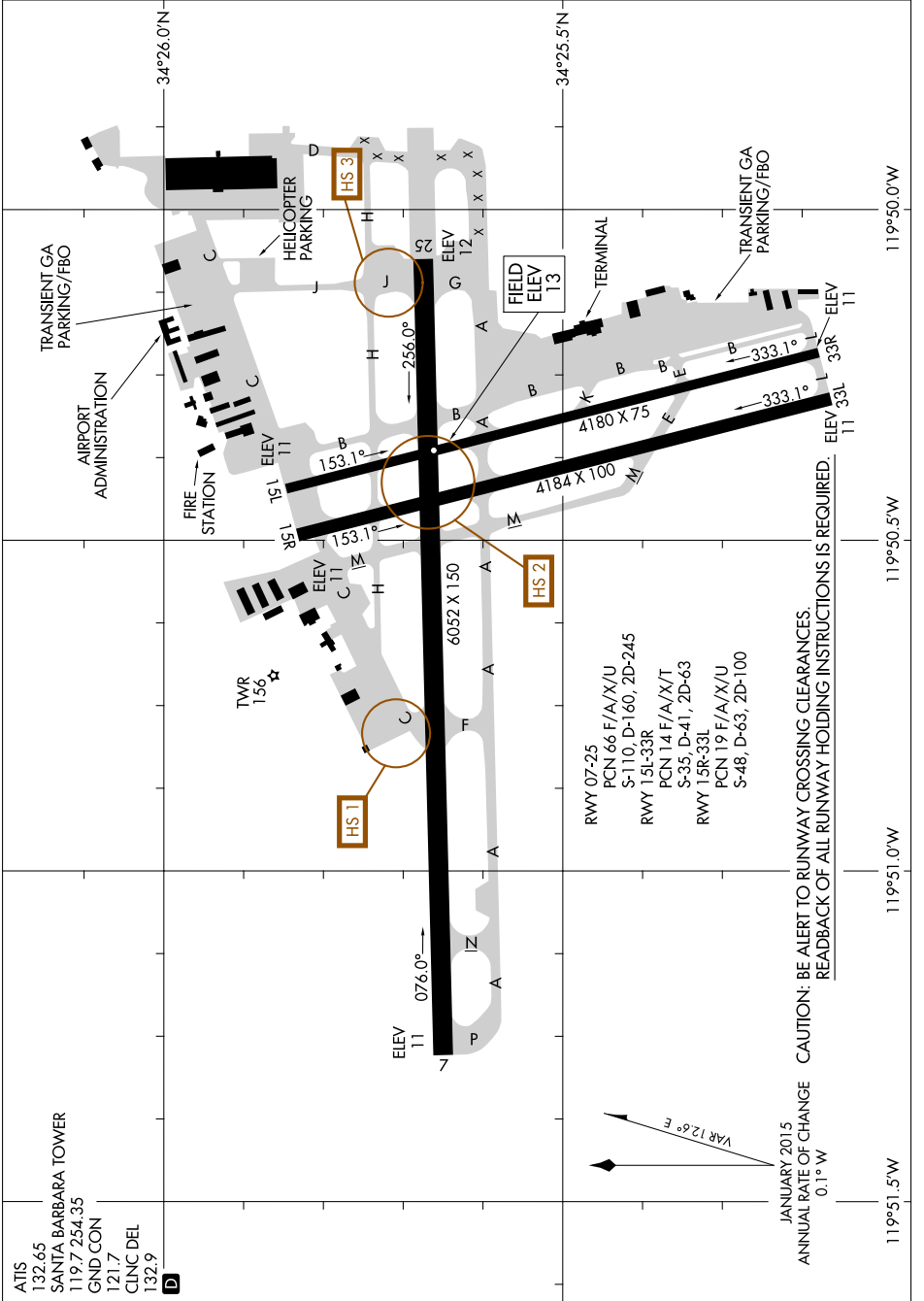
AIRPORT DIAGRAM

AL-378 (FAA)

SANTA BARBARA MUNI (SBA)

SANTA BARBARA, CALIFORNIA

SW-3, 31 JAN 2019 to 28 FEB 2019



119°51.5'W 119°50.5'W 119°50.0'W

ATIS
132.65
SANTA BARBARA TOWER
119.7 254.35
GND CON
121.7
CLNC DEL
132.9

RWY 07-25
PCN 66 F/A/X/U
S-110, D-160, 2D-245

RWY 15L-33R
PCN 14 F/A/X/T
S-35, D-41, 2D-63

RWY 15R-33L
PCN 19 F/A/X/U
S-48, D-63, 2D-100

JANUARY 2015
ANNUAL RATE OF CHANGE
0.1° W

CAUTION: BE ALERT TO RUNWAY CROSSING CLEARANCES.
READBACK OF ALL RUNWAY HOLDING INSTRUCTIONS IS REQUIRED.

SW-3, 31 JAN 2019 to 28 FEB 2019

AIRPORT DIAGRAM

19003

SANTA BARBARA, CALIFORNIA

SANTA BARBARA MUNI (SBA)