

(MUSEL8.MUSEL) 18312  
**MUSEL EIGHT DEPARTURE**

JOHN WAYNE AIRPORT-ORANGE COUNTY (SNA)  
 AL-377 (FAA) SANTA ANA, CALIFORNIA

D-ATIS  
 126.0  
 CLNC DEL  
 118.0  
 CPDLC  
 GND CON  
 (EAST) 120.8  
 (WEST) 132.25  
 SOCAL DEP CON  
 128.1 281.4

DAGGETT  
 113.2 DAG :---  
 Chan 79  
 N34°57.75'-W116°34.69'  
 L-7, H-4

POMONA  
 110.4 POM :---  
 Chan 41  
 N34°04.70'-W117°47.22'

**TAKEOFF MINIMUMS**  
 Rwy 20L: NA - ATC.  
 Rwy 20R: Standard with minimum climb  
 of 342' per NM to 2400.

NOTE: RADAR required.

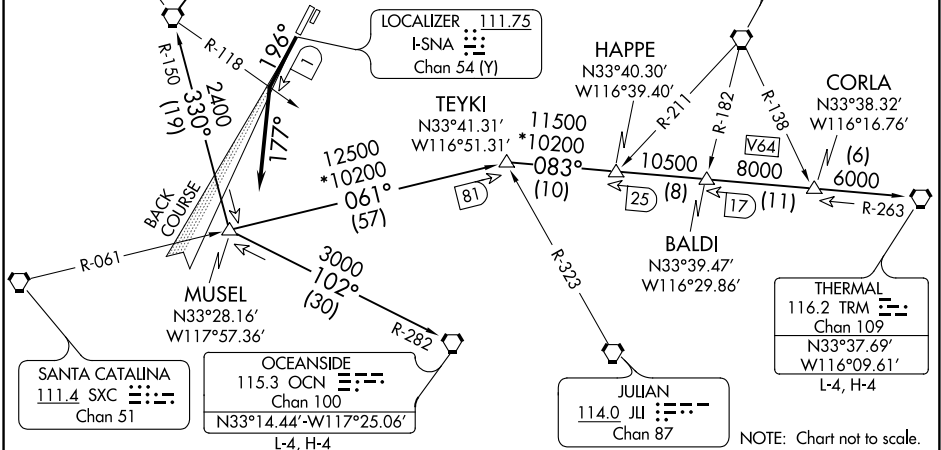
SEAL BEACH  
 115.7 SLI :---  
 Chan 104  
 N33°47.00'  
 W118°03.29'  
 L-3-4, H-4

LOCALIZER 111.75  
 I-SNA :---  
 Chan 54 (Y)

PARADISE  
 112.2 PDZ :---  
 Chan 59

PALM SPRINGS  
 115.5 PSP :---  
 Chan 102

SW-3, 31 JAN 2019 to 28 FEB 2019



SW-3, 31 JAN 2019 to 28 FEB 2019

**DEPARTURE ROUTE DESCRIPTION**

**TAKEOFF RUNWAY 20R:** Climb heading 196° or I-SNA localizer south course to I-SNA 1 DME fix or SLI R-118, turn left heading 177° for vectors to MUSEL INT. Thence . . . .

. . . . on (transition) or (assigned route). Expect filed altitude ten minutes after departure.

**DAGGETT TRANSITION (MUSEL8.DAG):** From over MUSEL INT on SLI R-150 to SLI VORTAC, then on SLI R-022 to POM VORTAC, then on POM R-033 to GARDY INT and on DAG R-214 to DAG VORTAC.

**OCEANSIDE TRANSITION (MUSEL8.OCN):** From over MUSEL INT on OCN R-282 to OCN VORTAC.

**SEAL BEACH TRANSITION (MUSEL8.SLI):** From over MUSEL INT on SLI R-150 to SLI VORTAC.

**THERMAL TRANSITION (MUSEL8.TRM):** From over MUSEL INT on SXC R-061 to TEYKI INT and TRM R-263 to TRM VORTAC.

**MUSEL EIGHT DEPARTURE**  
 (MUSEL8.MUSEL) 10NOV16

SANTA ANA, CALIFORNIA  
 JOHN WAYNE AIRPORT-ORANGE COUNTY (SNA)