

LOC/DME I-SNA <b>111.75</b> Chan 54(Y)	APP CRS <b>016°</b>	Rwy Idg <b>5701</b> TDZE <b>56</b> Apt Elev <b>56</b>
--	------------------------	---

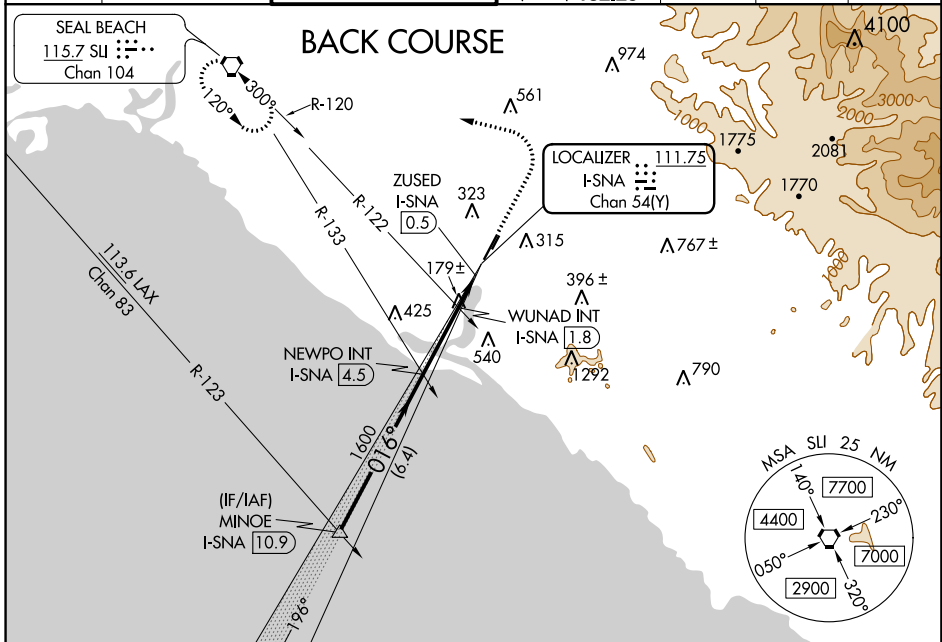
# LOC BC RWY 2L

JOHN WAYNE AIRPORT-ORANGE COUNTY (SNA)

**⚠** When local altimeter setting not received, use Fullerton altimeter setting and increase all MDA 40 feet, increase S-2L Cats C and D and Circling Cat C visibility ¼ SM, and increase WUNAD fix S-2L Cats C and D visibility ½ SM; Circling Cat C visibility ¼ SM.

**MISSED APPROACH:** Climb to 800 then climbing left turn to 2600 direct SLI VORTAC and hold.

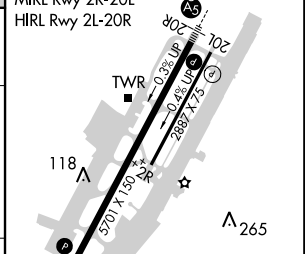
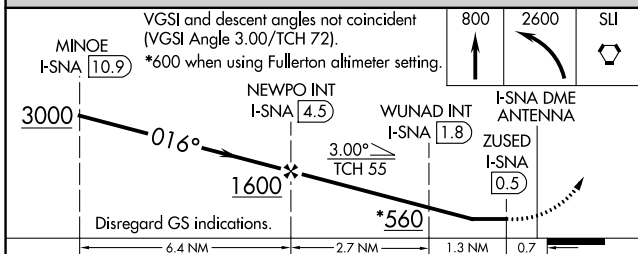
D-ATIS <b>126.0</b>	SOCAL APP CON <b>121.3 263.1</b>	JOHN WAYNE TOWER * <b>126.8</b> (CTAF) <b>379.9</b>	GND CON (EAST) <b>120.8</b> (WEST) <b>132.25</b>	CLNC DEL <b>118.0</b>	CPDLC	UNICOM <b>122.95</b>
------------------------	-------------------------------------	--	---	--------------------------	-------	-------------------------



SW-3, 31 JAN 2019 to 28 FEB 2019

SW-3, 31 JAN 2019 to 28 FEB 2019

ELEV 56	<b>D</b> TDZE 56
REIL Rwy 20L	MIRL Rwy 2R-20L
	HIRL Rwy 2L-20R



CATEGORY	A	B	C	D
S-2L	560-1	504 (600-1)	560-1 3/8	504 (600-1 3/8)
<b>C</b> CIRCLING	640-1	584 (600-1)	840-2 1/4 784 (800-2 1/4)	1160-3 1104 (1200-3)
WUNAD FIX MINIMUMS (DUAL VOR RECEIVERS OR DME REQUIRED)				
S-2L	480-1	424 (500-1)	480-1 1/4	424 (500-1 1/4)
<b>C</b> CIRCLING	640-1	584 (600-1)	840-2 1/4 784 (800-2 1/4)	1160-3 1104 (1200-3)

FAF to MAP 4 NM					
Knots	60	90	120	150	180
Min:Sec	4:00	2:40	2:00	1:36	1:20