


APP CRS	Rwy Idg	<b>6800</b>
<b>072°</b>	TDZE	<b>1175</b>
	Apt Elev	<b>1175</b>

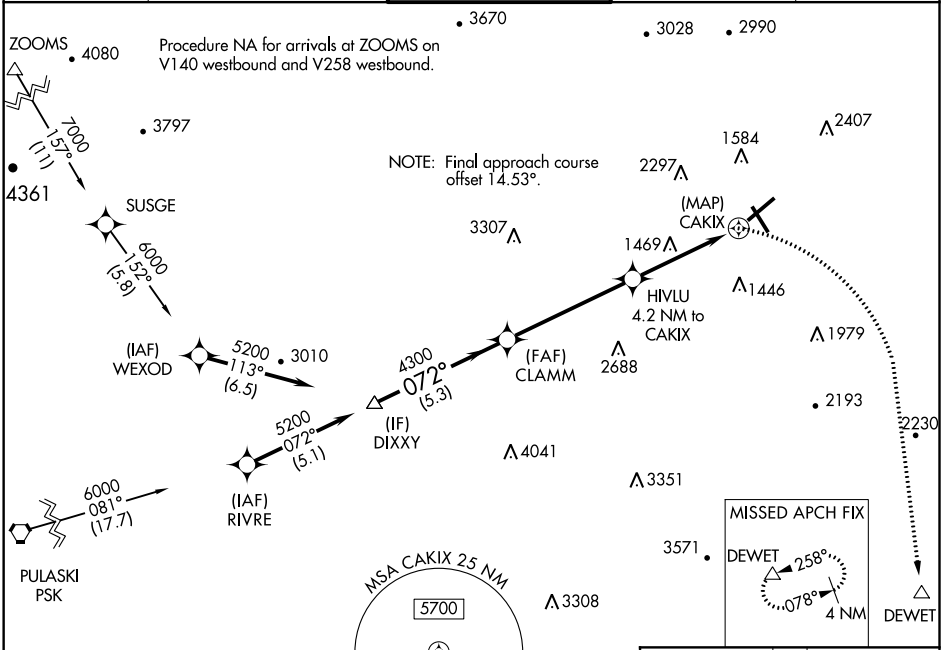
# RNAV (GPS) RWY 6

ROANOKE-BLACKSBURG RGNL/WOODRUM FIELD (R.O.A)

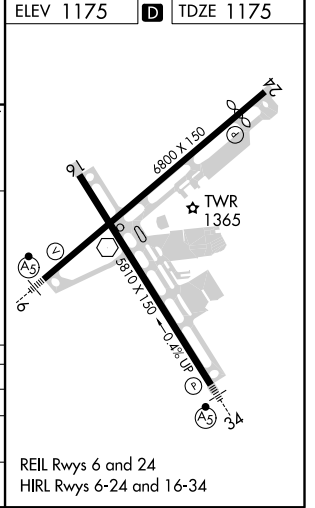
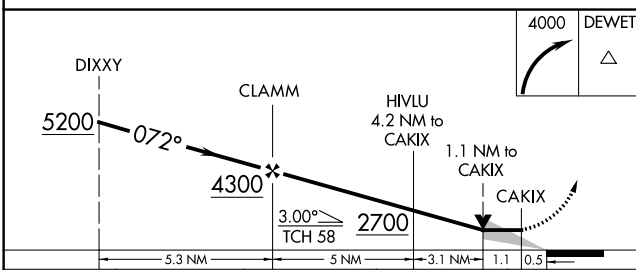
**⚠** Circling NA northwest of Rwy 6-24. DME/DME RNP-0.3 NA.  
**⚠** \*\*Missed approach requires minimum climb of 276 feet per NM to 2700.  
 For inop MALSR, increase LNAV\*\* Cat A and B visibility to 1 and LNAV Cat A visibility to 1, Cat C and D visibility to 2½ mile.

**MALSR**  
 MISSED APPROACH: Climbing right turn to 4000 direct DEWET and hold.

ATIS <b>132.375</b>	ROANOKE APP CON <b>126.9 339.8</b>	ROANOKE TOWER <b>118.3 257.8</b>	GND CON <b>121.9 257.8</b>	CLNC DEL <b>119.7</b>
------------------------	---------------------------------------	-------------------------------------	-------------------------------	--------------------------



ELEV 1175 **D** TDZE 1175



CATEGORY	A	B	C	D
LNAV MDA**	1720-¾	545 (600-¾)	1720-1½	545 (600-1½)
LNAV MDA	1980-¾	805 (900-¾)	1980-1½	805 (900-1½)
<b>C</b> CIRCLING	1980-1 805 (900-1)	1980-1¼ 805 (900-1¼)	2420-3 1245 (1300-3)	2800-3 1625 (1700-3)

# RNAV (GPS) RWY 6

NE-3, 31 JAN 2019 to 28 FEB 2019

NE-3, 31 JAN 2019 to 28 FEB 2019