


APP CRS	Rwy Idg	<b>9290</b>
<b>283°</b>	TDZE	<b>31</b>
	Apt Elev	<b>31</b>

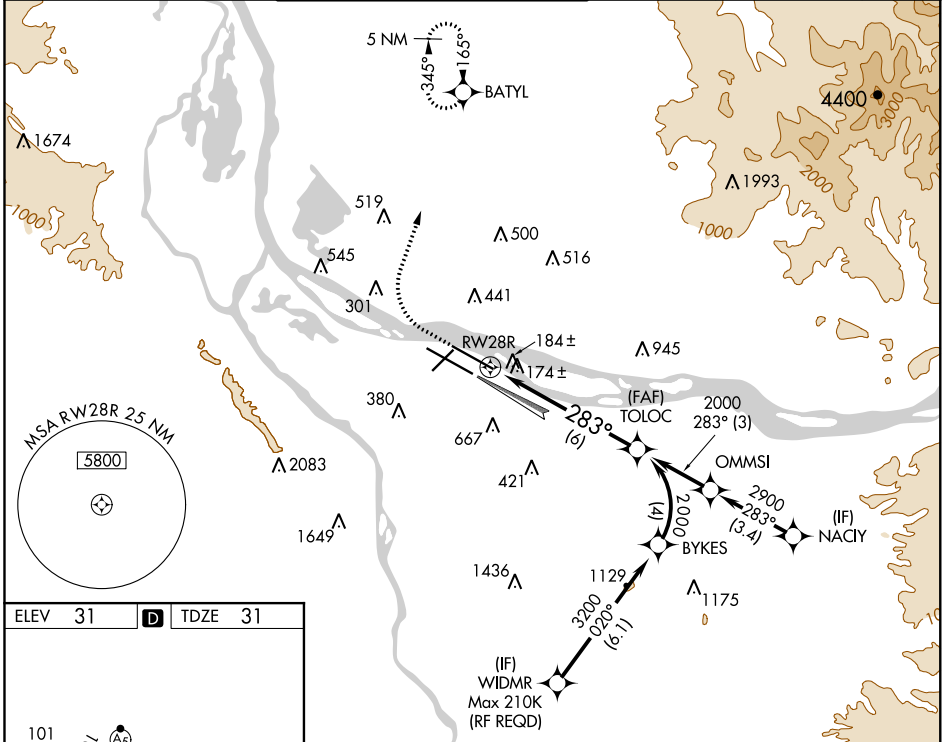
# RNAV (RNP) Z RWY 28R

PORTLAND INTL (PDX)

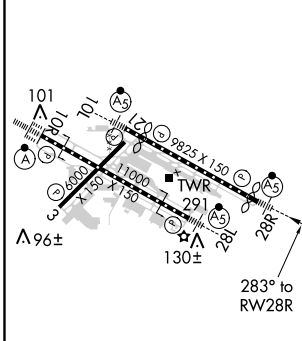
**▼** For uncompensated Baro-VNAV systems, procedure NA below -6°C (22°F) or above 54°C (130°F). Simultaneous approach authorized with Rwy 28L. RADAR required. GPS required. Use of FD or AP providing RNAV track guidance required during simultaneous operations. For inop MALSRL increase RNP 0.20 all Cats visibility to 1¼ mile, and increase RNP 0.30 all Cats visibility to 1½ mile.

**MALSRL**  
  
**MISSED APPROACH:**  
 Climb to 600 then climbing right turn to 4400 direct BATYL and hold, continue climb-in-hold to 4400.

D-ATIS <b>128.35</b> <b>269.9</b>	PORTLAND APP CON <b>124.35 299.2</b>	PORTLAND TOWER Rwy 10L-28R <b>118.7 257.8</b>	Rwys 3-21, 10R-28L <b>123.775 251.125</b>	GND CON <b>121.9 348.6</b>	CLNC DEL <b>120.125 318.1</b>	CPDLC
---	---	---	--	-------------------------------	----------------------------------	-------



ELEV 31	<b>D</b>	TDZE 31
---------	----------	---------



600	4400	BATYL	VGSI and RNAV glidepath not coincident (VGSI Angle 3.00/TCH 70).	TOLOC 2000
RWY 28R				2000
283°				GP 3.00° TCH 54
See planview for multiple IF locations.				
6 NM				

CATEGORY	A	B	C	D
RNP 0.20 DA	417/40	386 (400-¾)	417/50	386 (400-1)
RNP 0.30 DA	471/50		440 (500-1)	

## AUTHORIZATION REQUIRED

NW-1, 31 JAN 2019 to 28 FEB 2019

NW-1, 31 JAN 2019 to 28 FEB 2019