


RNAV (RNP) Y RWY 28L

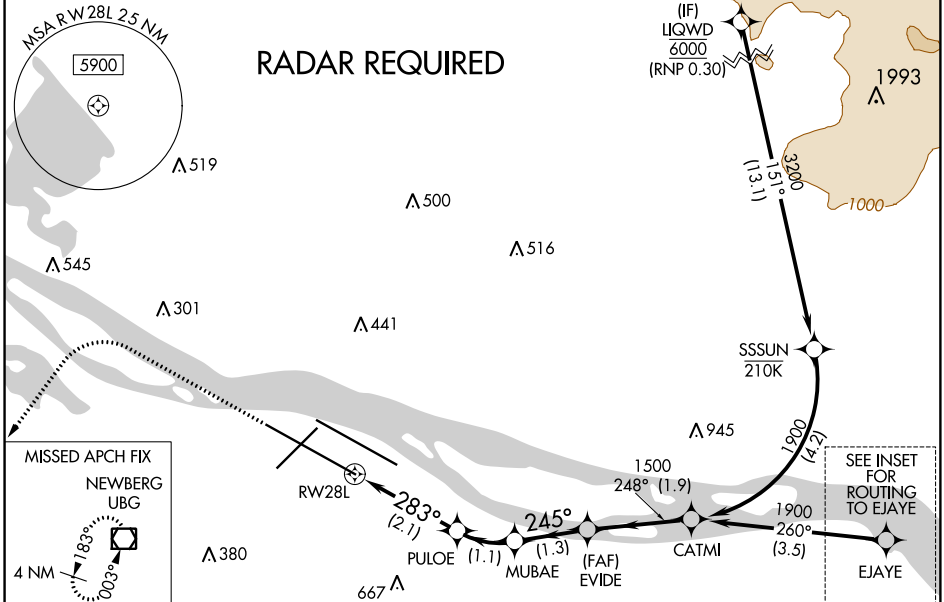
PORTLAND INTL (PDX)

APP CRS	Rwy Idg	11000
283°	TDZE	23
	Apt Elev	31

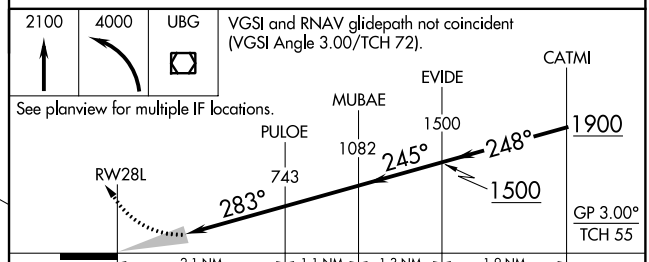
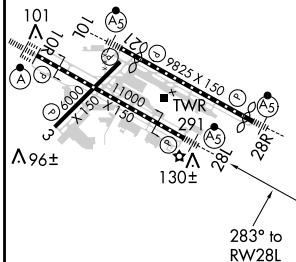
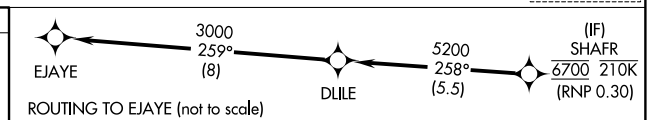
▼ For uncompensated Baro-VNAV systems, procedure NA below -7°C (20°F) or above 54°C (130°F). For inop MAALS, increase RNP 0.23 all Cats visibility to RVR 5600 and increase RNP 0.30 all Cats visibility to 1½ mile. Simultaneous approach authorized with Rwy 28R. RF required. GPS required. Use of FD or AP providing RNAV track guidance required during simultaneous operations.

MALS  MISSED APPROACH: Climb to 2100 then climbing left turn to 4000 direct UBG VOR/DME and hold.

D-ATIS 128.35 269.9	PORTLAND APP CON 124.35 299.2	PORTLAND TOWER Rwy 10L-28R 118.7 257.8	Rwys 3-21, 10R-28L 123.775 251.125	GND CON 121.9 348.6	CLNC DEL 120.125 318.1	CPDLC
---	---	---	--	-------------------------------	----------------------------------	-------



ELEV 31	D	TDZE 23
---------	----------	---------



CATEGORY	A	B	C	D
RNP 0.23 DA		370/33	347 (400- ⁵ / ₈)	
RNP 0.30 DA		476/53	453 (500-1)	

MIRL Rwy 3-21
TDZ/CL Rwy 10R
REIL Rwys 3 and 21
HIRL Rwys 10L-28R and 10R-28L

RNAV (RNP) Y RWY 28L

NW-1, 31 JAN 2019 to 28 FEB 2019

NW-1, 31 JAN 2019 to 28 FEB 2019

AUTHORIZATION REQUIRED