

ST. JOHNS EIGHT DEPARTURE

AL-322 (FAA)

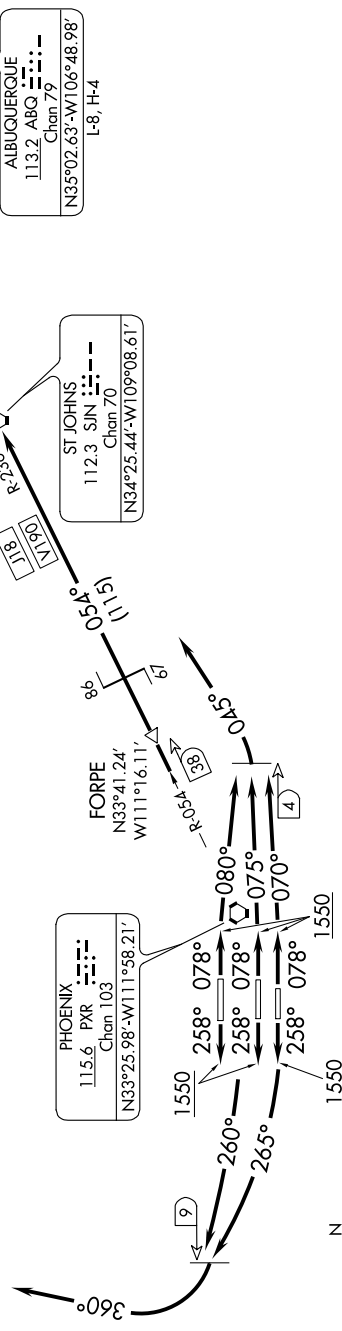
PHOENIX SKY HARBOR INTL (PHX)
PHOENIX, ARIZONA

**TOP ALTITUDE:
8000**

TAKEOFF MINIMUMS

Rwys 7L/7R/8: Standard with minimum climb of 350' per NM to 8000.
Rwys 25L/25R/26: Standard with minimum climb of 350' per NM to 8000.

- D-ATIS 127.575
- CLNC DEL 118.1 269.2
- CPDLC 119.75 269.2 (NORTH)
- 132.55 269.2 (SOUTH)
- PHOENIX TOWER 118.7 278.8 (Rwy 8-26)
- 120.9 254.3 (Rwys 7L-25R, 7R-25L)
- PHOENIX DEP CON 119.2 281.45



NOTE: Restricted to turbojet and turboprop aircraft only.

NOTE: RADAR and DME required.

NOTE: Aircraft filing over ALS, RSK and points north of ALS file SILOW DEPARTURE.

NOTE: Aircraft filing over CIM, FTI and GCK file ST JOHNS DEPARTURE.

NOTE: Aircraft filing over ACH, LBL, ONM, CNX, PNH, MMB, TCC, IRW and TXO file MAXXO DEPARTURE.

(NARRATIVE ON FOLLOWING PAGE)

NOTE: Chart not to scale.

SW-4, 31 JAN 2019 to 28 FEB 2019

SW-4, 31 JAN 2019 to 28 FEB 2019

ST. JOHNS EIGHT DEPARTURE