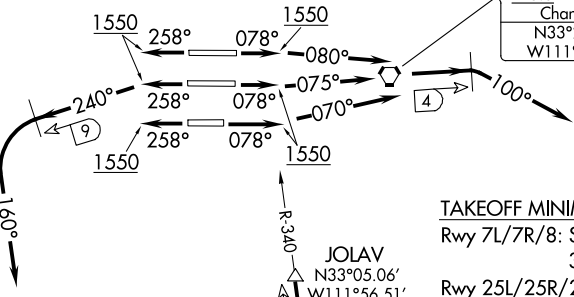


# STANFIELD FOUR DEPARTURE

**TOP ALTITUDE:  
8000**

D-ATIS  
127.575  
CLNC DEL  
118.1 269.2  
118.1 269.2  
CPDLC  
GND CON  
119.75 269.2 (NORTH)  
132.55 269.2 (SOUTH)  
PHOENIX TOWER  
118.7 278.8 (Rwy 8-26)  
120.9 254.3 (Rwys 7L-25R, 7R-25L)  
PHOENIX DEP CON  
126.8 269.6

PHOENIX  
115.6 PXR  
Chan 103  
N33°25.98'  
W111°58.21'



### TAKEOFF MINIMUMS

Rwy 7L/7R/8: Standard with minimum climb of 300' per NM to 8000.

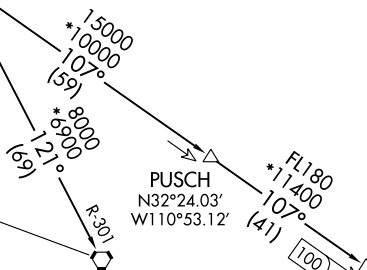
Rwy 25L/25R/26: Standard with minimum climb of 350' per NM to 8000.

NOTE: STANFIELD DEPARTURE restricted to turbojet and turboprop aircraft only.

NOTE: RADAR and DME required.

STANFIELD  
114.8 TFD  
Chan 95  
N32°53.15'-W111°54.52'

TUCSON  
116.0 TUS  
Chan 107  
N32°05.71'-W110°54.89'  
L-5, H-4



NOTE: Chart not to scale.

### DEPARTURE ROUTE DESCRIPTION

**TAKEOFF RUNWAY 8:** Climb heading 078° to 1550, then climbing right turn heading 080°, at 4 DME east of PXR VORTAC, climbing right turn heading 100°. Thence. . .

**TAKEOFF RUNWAY 7L:** Climb heading 078° to 1550, then climbing left turn heading 075°, at 4 DME east of PXR VORTAC, climbing right turn heading 100°. Thence. . .

**TAKEOFF RUNWAY 7R:** Climb heading 078° to 1550, then climbing left turn heading 070°, at 4 DME east of PXR VORTAC, climbing right turn heading 100°. Thence. . .

**TAKEOFF RUNWAY 25L/25R/26:** Climb heading 258° to 1550, then climbing left turn heading 240°, at 9 DME west of PXR VORTAC, climbing left turn heading 160°. Thence. . .

. . . maintain 8000, expect RADAR vectors to TFD R-340 to TFD VORTAC. Thence via (Transition). Expect further clearance to filed altitude 3 minutes after departure.

**LOST COMMUNICATIONS:** Expect filed altitude 3 minutes after departure.

**OLIIN TRANSITION (TFD4.OLIIN):** From over TFD VORTAC on TFD R-107 to OLIIN INT.

**TUCSON TRANSITION (TFD4.TUS):** From over TFD VORTAC on TFD R-121 and TUS R-301 to TUS VORTAC.

# STANFIELD FOUR DEPARTURE