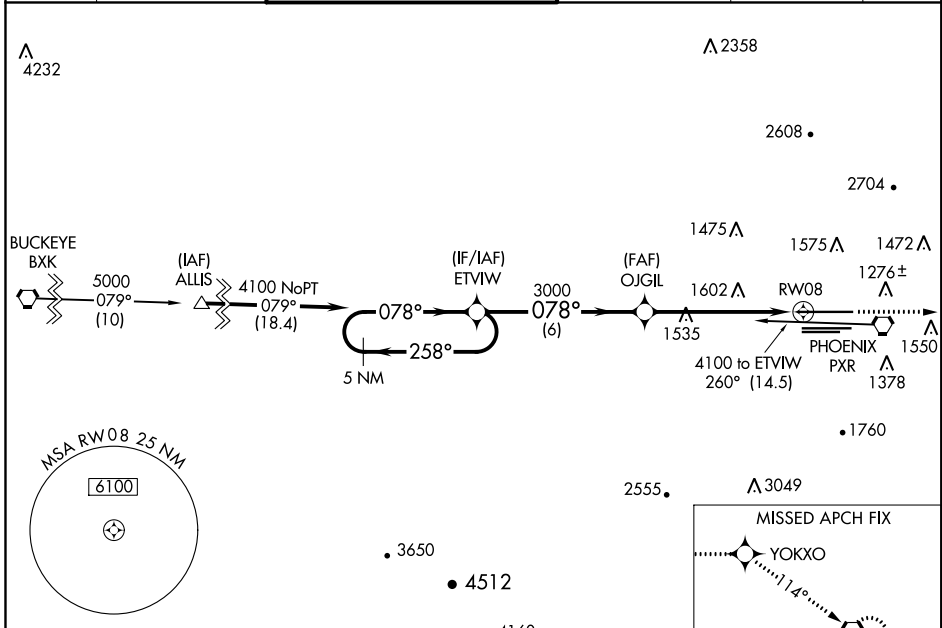


WAAS CH 86611 W08A	APP CRS 078°	Rwy Idg 10591 TDZE 1118 Apt Elev 1135
--	------------------------	--

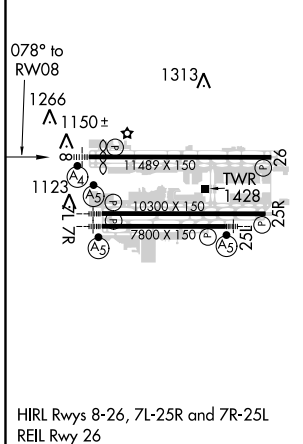
RNAV (GPS) Y RWY 8

PHOENIX SKY HARBOR INTL (PHX)

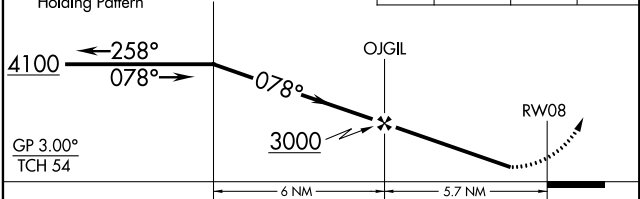
<p>▽ Inoperative table does not apply. DME/DME RNP-0.3 NA. ▲ Visibility reduction by helicopters NA.</p>	<p>MALSF</p>		<p>MISSED APPROACH: Climb to 5000 direct YOKXO and via 114° track to IWA VORTAC and hold.</p>		
	<p>D-ATIS 127.575</p>	<p>PHOENIX APP CON 128.65 353.9</p>	<p>PHOENIX TOWER 118.7 278.8 (Rwy 8-26) 120.9 254.3 (Rwy 7L-25R, 7R-25L)</p>	<p>GND CON 119.75 269.2 (N) 132.55 269.2 (S)</p>	<p>CLNC DEL 118.1 269.2</p>



ELEV 1135	D	TDZE 1118
-----------	----------	-----------



VGS1 and RNAV glidepath not coincident (VGS1 Angle 3.00/TCH 69).
 5 NM Holding Pattern ETVIW
 5000 YOKXO 114° tr IWA



CATEGORY	A	B	C	D
LPV DA	1394-1 276 (300-1)			
LNAV MDA	1860-1 742 (800-1)	1860-1¼ 742 (800-1¼)	1860-2¼ 742 (800-2¼)	1860-2½ 742 (800-2½)
CIRCLING	1860-1 725 (800-1)	1860-1¼ 725 (800-1¼)	1860-2¼ 725 (800-2¼)	1920-2½ 785 (800-2½)

SW-4, 31 JAN 2019 to 28 FEB 2019

SW-4, 31 JAN 2019 to 28 FEB 2019