


WAAS CH 65811 W07A	APP CRS 078°	Rwy Idg 10300 TDZE 1116 Apt Elev 1135
--	------------------------	--

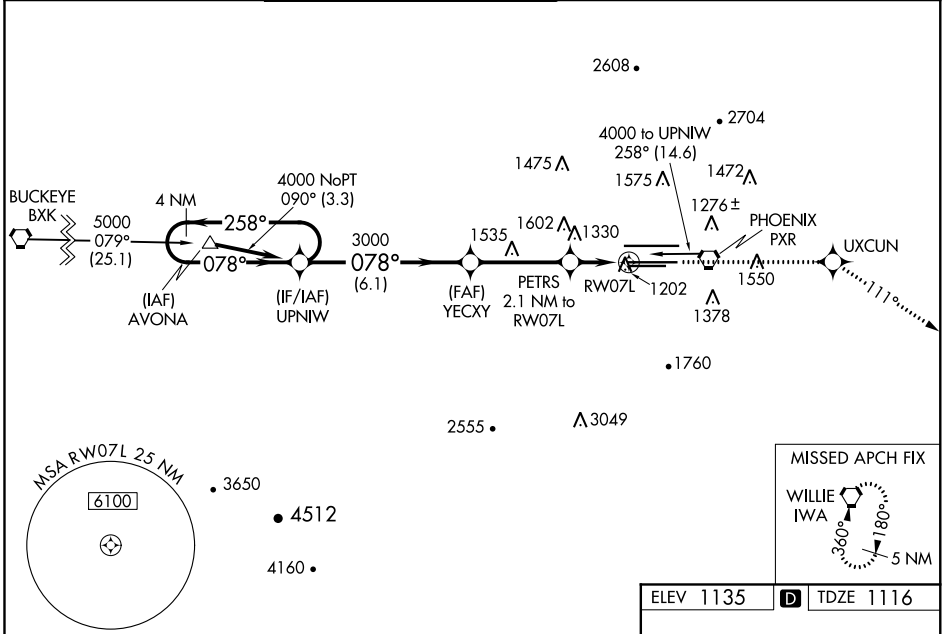
RNAV (GPS) Y RWY 7L

PHOENIX SKY HARBOR INTL (PHX)

⚠ For inoperative MALSR, increase LPV all Cats visibility to RVR 5000. For uncompensated Baro-VNAV systems, LNAV/VNAV NA below -17°C (2°F) or above 46°C (114°F). DME/DME RNP-0.3 NA. Simultaneous approach authorized with ILS or LOC Rwy 8. Use of FD or AP providing RNAV track guidance required during simultaneous operations. LNAV procedure NA during simultaneous operations.

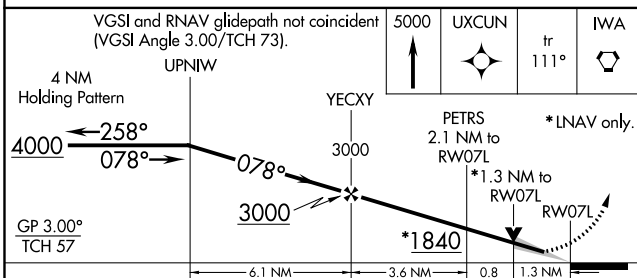
MALSR
 MISSED APPROACH: Climb to 5000 direct UXCUN and via 111° track to IWA VORTAC and hold.

D-ATIS 127.575	PHOENIX APP CON 128.65 353.9	PHOENIX TOWER 118.7 278.8 (Rwy 8-26) 120.9 254.3 (Rwy 7L-25R, 7R-25L)	GND CON 119.75 269.2 (N) 132.55 269.2 (S)	CLNC DEL 118.1 269.2	CPDLC
--------------------------	--	---	---	--------------------------------	-------

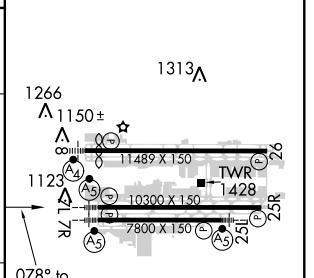


SW-4, 31 JAN 2019 to 28 FEB 2019

SW-4, 31 JAN 2019 to 28 FEB 2019



ELEV 1135	D TDZE 1116
-----------	--------------------



CATEGORY	A	B	C	D
LPV DA	1389/24		273 (300-½)	
LNAV/VNAV DA	1519/50		403 (400-1)	
LNAV MDA	1580/24	464 (500-½)	1580/40 464 (500-¾)	1580/50 464 (500-1)
CIRCLING	1740-1	605 (700-1)	1740-1¾ 605 (700-1¾)	1920-2½ 785 (800-2½)

HIRL Rws 8-26, 7L-25R and 7R-25L
REIL Rwy 26