

| | | |
|--|------------------------|--|
| WAAS CH 70321 W26A | APP CRS 258° | Rwy Idg 11489 TDZE 1135 Apt Elev 1135 |
|--|------------------------|--|

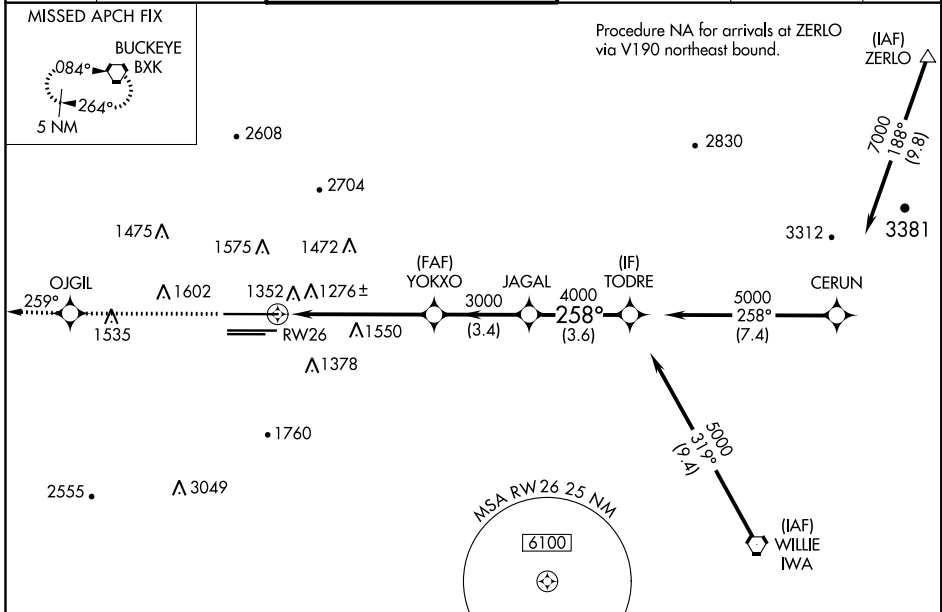
RNAV (GPS) Y RWY 26

PHOENIX SKY HARBOR INTL (PHX)

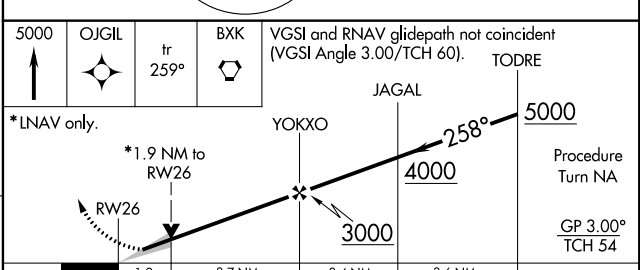
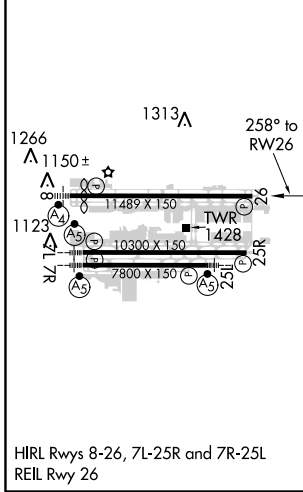
⚠ For uncompensated Baro-VNAV systems, LNAV/VNAV NA below -17°C (2°F) or above 46°C (114°F). DME/DME RNP-0.3 NA. Simultaneous approach authorized with ILS or LOC Rwy 25L. Use of FD or AP providing RNAV track guidance required during simultaneous operations. LNAV procedure NA during simultaneous operations.

MISSED APPROACH: Climb to 5000 direct OJGIL and via 259° track to BXX VORTAC and hold.

| | | | | | |
|--------------------------|--|---|---|--------------------------------|-------|
| D-ATIS 127.575 | PHOENIX APP CON 128.65 353.9 | PHOENIX TOWER 118.7 278.8 (Rwy 8-26) 120.9 254.3 (Rwy 7L-25R, 7R-25L) | GND CON 119.75 269.2 (N) 132.55 269.2 (S) | CLNC DEL 118.1 269.2 | CPDLC |
|--------------------------|--|---|---|--------------------------------|-------|



| | | |
|-----------|----------|-----------|
| ELEV 1135 | D | TDZE 1135 |
|-----------|----------|-----------|



| CATEGORY | A | B | C | D |
|--------------|---|---|---|---|
| LPV DA | 1436-1 301 (400-1) | | | |
| LNAV/VNAV DA | 1659-1 ³ / ₄ 524 (600-1 ³ / ₄) | | | |
| LNAV MDA | 1800-1 665 (700-1) | 1800-1 ³ / ₄ 665 (700-1 ³ / ₄) | | 1800-2 665 (700-2) |
| CIRCLING | 1800-1 665 (700-1) | 1800-1 ³ / ₄ 665 (700-1 ³ / ₄) | | 1920-2 ¹ / ₂ 785 (800-2 ¹ / ₂) |

SW-4, 31 JAN 2019 to 28 FEB 2019

SW-4, 31 JAN 2019 to 28 FEB 2019