

WAAS CH <b>82211</b> <b>W25B</b>	APP CRS <b>258°</b>	Rwy Idg TDZE Apt Elev	<b>7800</b> <b>1126</b> <b>1135</b>
--	------------------------	-----------------------------	---

# RNAV (GPS) Y RWY 25L

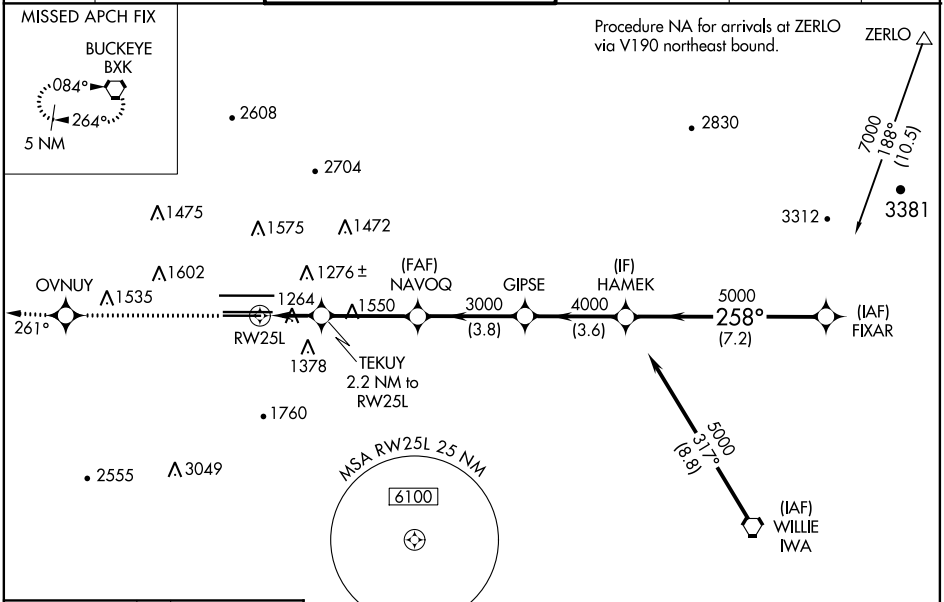
PHOENIX SKY HARBOR INTL (PHX)

**⚠** For inoperative MALSR, increase LPV *all* Cts visibility to 1¼. For uncompensated Baro-VNAV systems, LNAV/VNAV NA below -17°C (2°F) or above 46°C (114°F). DME/DME RNP-0.3 NA. Simultaneous approach authorized with ILS or LOC Rwy 26. Use of FD or AP providing RNAV track guidance required during simultaneous operations. LNAV procedure NA during simultaneous operations.

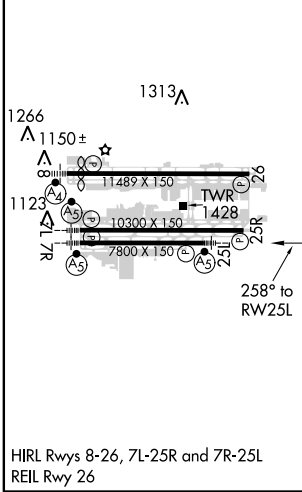


**MISSED APPROACH:** Climb to 5000 direct OVNUY and via 261° track to BKK VORTAC and hold.

D-ATIS <b>127.575</b>	PHOENIX APP CON <b>128.65 353.9</b>	PHOENIX TOWER <b>118.7 278.8</b> (Rwy 8-26) <b>120.9 254.3</b> (Rwy 7L-25R, 7R-25L)	GND CON <b>119.75 269.2</b> (N) <b>132.55 269.2</b> (S)	CLNC DEL <b>118.1 269.2</b>	CPDLC
--------------------------	--	---	---	--------------------------------	-------



ELEV 1135	<b>D</b>	TDZE 1126
-----------	----------	-----------



5000	OVNUY	BKK	VGSi and RNAV glidepath not coincident (VGSi Angle 3.00/TCH 66).					
↑	✧	tr 261°	✧	✧	✧	✧		
*LNAV only.			TEKUY 2.2 NM to RWY25L	NAVOQ	GIPSE	HAMEK	FIXAR	
*1.5 NM to RWY25L			1880*	3000	4000	5000	7000	
RWY25L			1.5 NM	0.7 NM	3.4 NM	3.8 NM	3.6 NM	7.2 NM
CATEGORY	A		B		C		D	
LPV DA	1482-¾		356 (400-¾)					
LNAV/VNAV DA	1613-1¼		487 (500-1¼)					
LNAV MDA	1680-½		554 (600-½)		1680-1 554 (600-1)		1680-1¼ 554 (600-1¼)	
CIRCLING	1740-1		605 (700-1)		1740-1¾ 605 (700-1¾)		1920-2½ 785 (800-2½)	

SW-4, 31 JAN 2019 to 28 FEB 2019

SW-4, 31 JAN 2019 to 28 FEB 2019