

APP CRS <b>258°</b>	Rwy Idg TDZE Apt Elev	<b>10300</b> <b>1134</b> <b>1135</b>
------------------------	-----------------------------	--

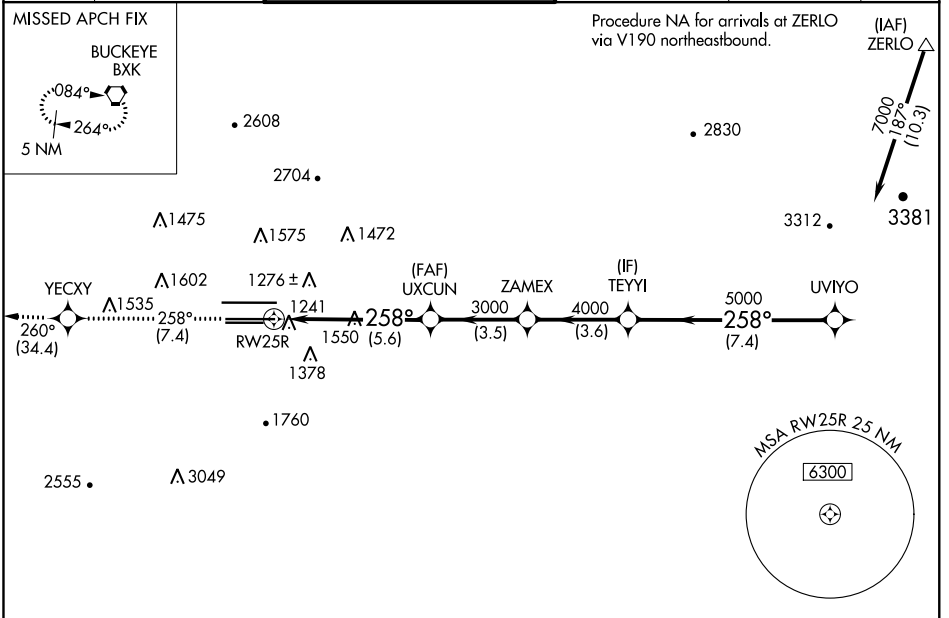
# RNAV (RNP) Z RWY 25R

PHOENIX SKY HARBOR INTL (PHX)

**▽** Visibility reduction by helicopters NA. GPS required. For uncompensated Baro-VNAV systems, procedure NA below 1°C (34°F) or above 46°C (116°F). Simultaneous approach authorized with ILS or LOC Rwy 26. Use of FD or AP providing RNAV track guidance required during simultaneous operations.

MISSED APPROACH: Climb to 5000 via track 258° to YECXY and via track 260° to BKK VORTAC and hold.

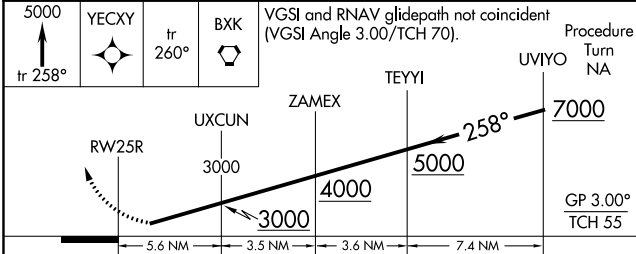
D-ATIS <b>127.575</b>	PHOENIX APP CON <b>128.65 353.9</b>	PHOENIX TOWER <b>118.7 278.8</b> (Rwy 8-26) <b>120.9 254.3</b> (Rwy 7L-25R, 7R-25L)	GND CON <b>119.75 269.2</b> (N) <b>132.55 269.2</b> (S)	CLNC DEL <b>118.1 269.2</b>	CPDLC
--------------------------	--	---	---	--------------------------------	-------



SW-4, 31 JAN 2019 to 28 FEB 2019

SW-4, 31 JAN 2019 to 28 FEB 2019

ELEV 1135	TDZE 1134
-----------	-----------



CATEGORY	A	B	C	D
RNP 0.20 DA	1597-1½ 463 (500-1½)			
RNP 0.30 DA	1622-1¾ 488 (500-1¾)			

**AUTHORIZATION REQUIRED**

