

APP CRS	Rwy Idg	<b>7800</b>
<b>258°</b>	TDZE	<b>1126</b>
	Apt Elev	<b>1135</b>

# RNAV (RNP) Z RWY 25L

PHOENIX SKY HARBOR INTL (PHX)

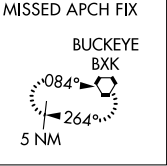
⚠ For inoperative MALSR, increase RNP 0.11 all Cats visibility to 1¾, RNP 0.30 all Cats visibility to 2. Visibility reduction by helicopters NA. GPS required. For uncompensated Baro-VNAV systems, procedure NA below 1°C (34°F) or above 46°C (116°F). Simultaneous approach authorized with ILS or LOC Rwy 26. Use of FD or AP providing RNAV track guidance required during simultaneous operations.



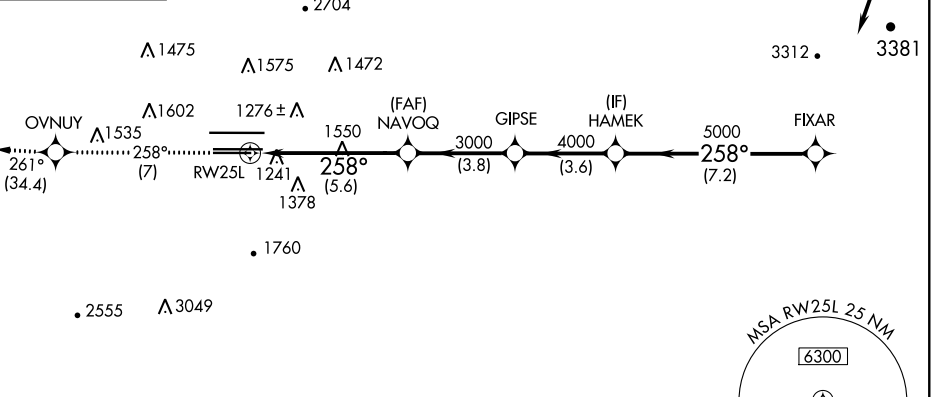
MISSED APPROACH: Climb to 5000 via track 258° to OVNUY and via track 261° to BXX VORTAC and hold.

D-ATIS	PHOENIX APP CON	PHOENIX TOWER
<b>127.575</b>	<b>128.65 353.9</b>	<b>118.7 278.8</b> (Rwy 8-26) <b>120.9 254.3</b> (Rwy 7L-25R, 7R-25L)

GND CON	CLNC DEL	CPDLC
<b>119.75 269.2</b> (N) <b>132.55 269.2</b> (S)	<b>118.1 269.2</b>	



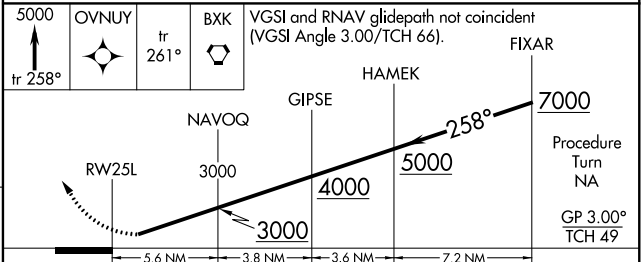
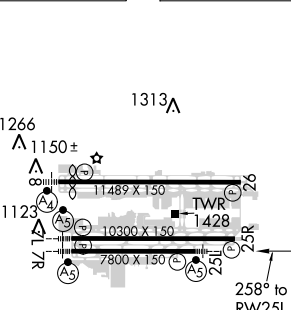
Procedure NA for arrivals at ZERLO via V190 northeast bound. (IAF) ZERLO



SW-4, 31 JAN 2019 to 28 FEB 2019

SW-4, 31 JAN 2019 to 28 FEB 2019

ELEV 1135	<b>D</b>	TDZE 1126
-----------	----------	-----------



CATEGORY	A	B	C	D
RNP 0.11 DA		1617-1¼	491 (500-1¼)	
RNP 0.30 DA		1664-1½	538 (600-1½)	

HIRL Rwys 8-26, 7L-25R and 7R-25L  
REIL Rwy 26

## AUTHORIZATION REQUIRED