

LOC/DME I-SYQ <b>111.75</b> Chan <b>54 (Y)</b>	APP CRS <b>078°</b>	Rwy Idg <b>10591</b> TDZE <b>1118</b> Apt Elev <b>1135</b>
--	------------------------	--

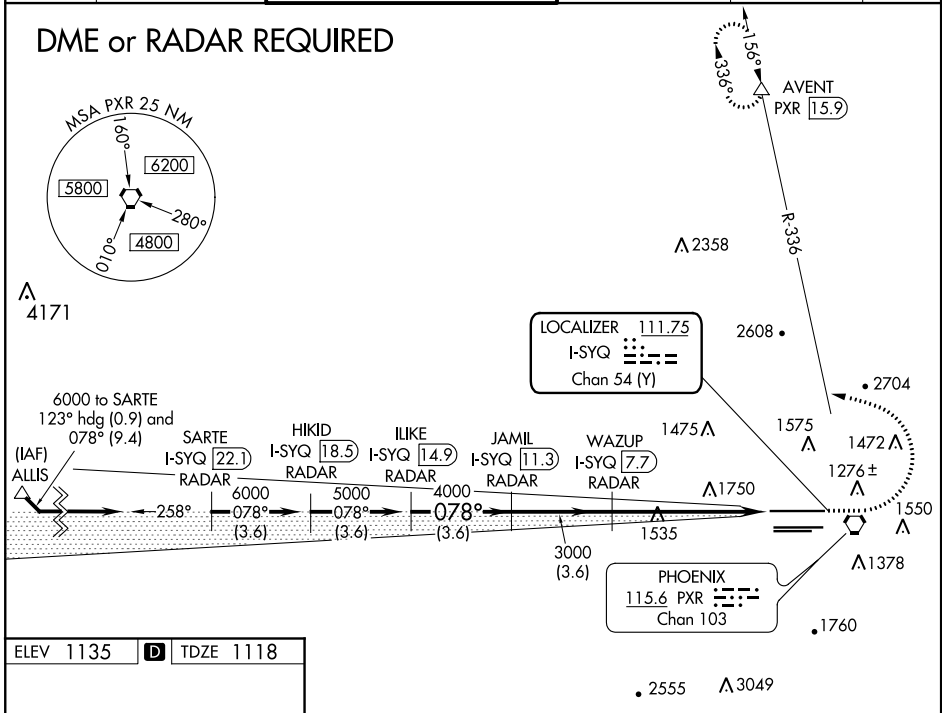
# ILS or LOC RWY 8

PHOENIX SKY HARBOR INTL (PHX)

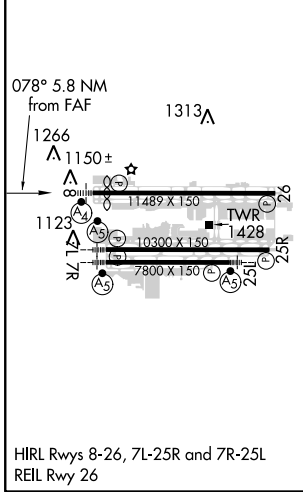
<p>Simultaneous approach authorized with Rwy 7R and RNAV (RNP) Z Rwy 7L, RNAV (GPS) Y Rwy 7L. DME required.</p>	<p>MALSF</p>	<p>MISSED APPROACH: Climb to 3000, then climbing left turn to 5000 via heading 280° and PXR R-336 to AVENT/PXR 15.9 DME and hold.</p>
---	--------------	---

D-ATIS <b>127.575</b>	PHOENIX APP CON <b>128.65 353.9</b>	PHOENIX TOWER <b>118.7 278.8</b> (Rwy 8-26) <b>120.9 254.3</b> (Rwy 7L-25R, 7R-25L)	GND CON <b>119.75 269.2</b> (N) <b>132.55 269.2</b> (S)	CLNC DEL <b>118.1 269.2</b>	CPDLC
--------------------------	--	---	---	--------------------------------	-------

## DME or RADAR REQUIRED



ELEV 1135	<b>D</b>	TDZE 1118
-----------	----------	-----------



VGSi and ILS glidepath not coincident (VGSi Angle 3.00/TCH 69).			
ILIKE I-SYQ 14.9 RADAR	JAMIL I-SYQ 11.3 RADAR	WAZUP I-SYQ 7.7 RADAR	PHOENIX 115.6 PXR Chan 103
5000	4000	3000	1.9
Procedure Turn NA		Use I-SYQ DME when on LOC course.	
GS 3.00° TCH 55	3.6 NM	3.6 NM	5.7 NM
A	B	C	D
S-ILS 8	1368-1 250 (300-1)		
S-LOC 8	1860-1 742 (800-1)	1860-1¼ 742 (800-1¼)	1860-2¼ 742 (800-2¼)
CIRCLING	1860-1 725 (800-1)	1860-1¼ 725 (800-1¼)	1860-2½ 785 (800-2½)

SW-4, 31 JAN 2019 to 28 FEB 2019

SW-4, 31 JAN 2019 to 28 FEB 2019