

LOC/DME I-AHA 110.75 Chan 44 (Y)	APP CRS 078°	Rwy Idg 7800 TDZE 1116 Apt Elev 1135
--	------------------------	---

ILS or LOC RWY 7R

PHOENIX SKY HARBOR INTL (PHX)

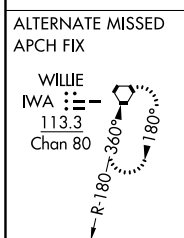
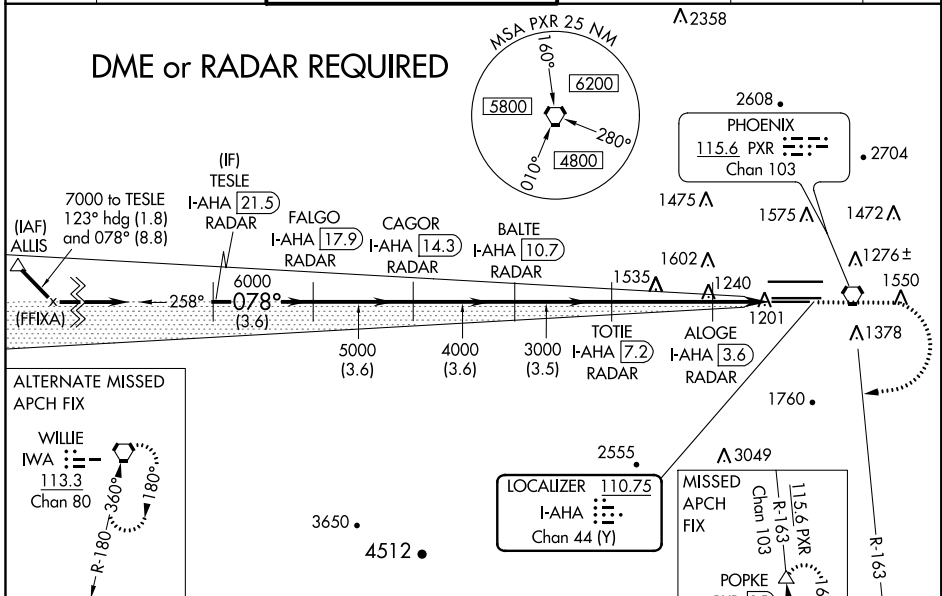
⚠ Inoperative table does not apply to S-ILS 7R. Simultaneous approach authorized with ILS or LOC Rwy 8. DME required. Visibility reduction by helicopters NA. LOC procedure NA during simultaneous operations. For inoperative MALSR, increase S-LOC 7R visibility Cats A/B to 1 mile and Cats C/D to 1½ mile.



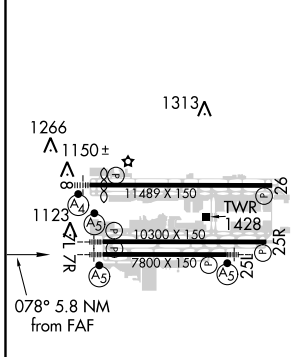
MISSED APPROACH: Climb to 3300 then climbing right turn to 5000 on heading 250° and PXR VORTAC R-163 to POPKE/PXR 15 DME and hold.

D-ATIS 127.575	PHOENIX APP CON 128.65 353.9	PHOENIX TOWER 118.7 278.8 (Rwy 8-26) 120.9 254.3 (Rwy 7L-25R, 7R-25L)	GND CON 119.75 269.2 (N) 132.55 269.2 (S)	CLNC DEL 118.1 269.2	CPDLC
--------------------------	--	---	---	--------------------------------	-------

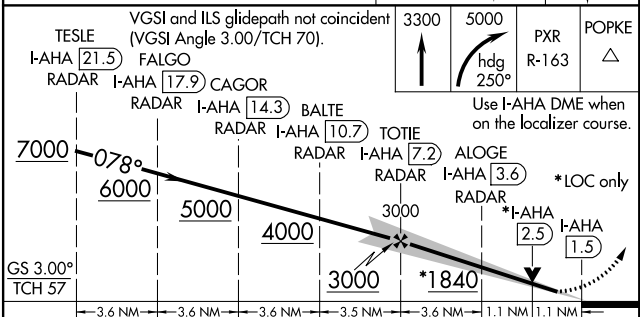
DME or RADAR REQUIRED



ELEV 1135	D	TDZE 1116
------------------	----------	------------------



HIRL Rwy 8-26, 7L-25R and 7R-25L REIL Rwy 26					
FAF to MAP 5.8 NM					
Knots	60	90	120	150	180
Min:Sec	5:48	3:52	2:54	2:19	1:56



VGSI and ILS glidepath not coincident (VGSI Angle 3.00/TCH 57).	3300	5000	PXR R-163	POPKE
Use I-AHA DME when on the localizer course.				
7000	6000	5000	4000	3000
GS 3.00°				
TCH 57				
	3.6 NM	3.6 NM	3.6 NM	3.5 NM
CATEGORY	A	B	C	D
S-ILS 7R		1369-¾	253 (300-¾)	
S-LOC 7R		1520-¾	404 (400-¾)	
CIRCLING	1740-1	605 (700-1)	1740-1¾ 605 (700-1¾)	1920-2½ 785 (800-2½)

SW-4, 31 JAN 2019 to 28 FEB 2019

SW-4, 31 JAN 2019 to 28 FEB 2019