

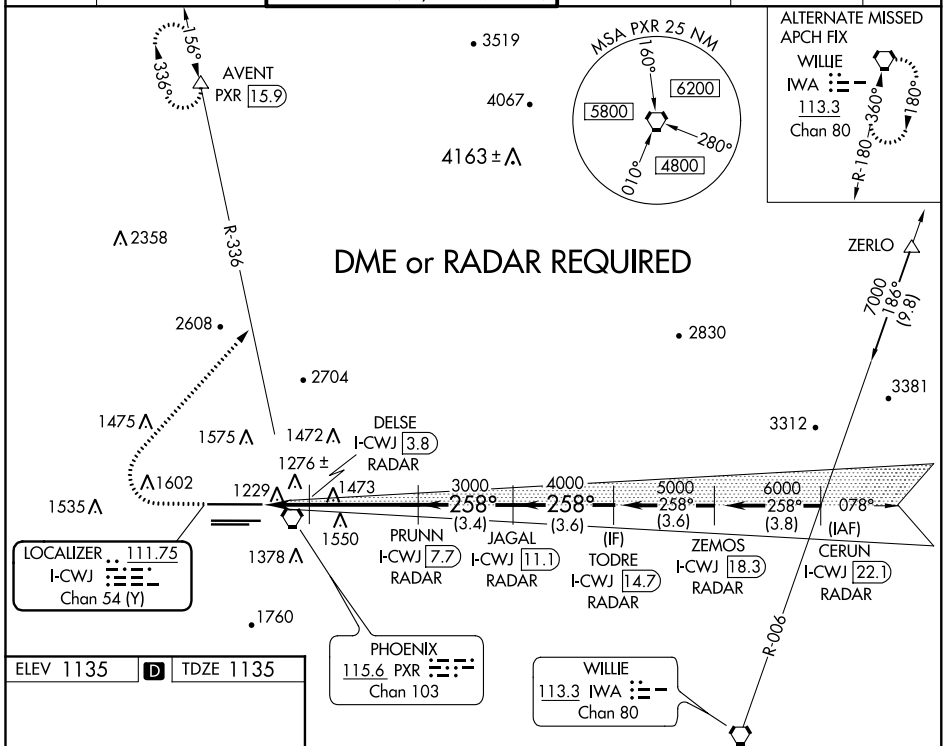
LOC/DME I-CWJ 111.75 Chan 54 (Y)	APP CRS 258°	Rwy Idg 11489 TDZE 1135 Apt Elev 1135
---	------------------------	--

ILS or LOC RWY 26

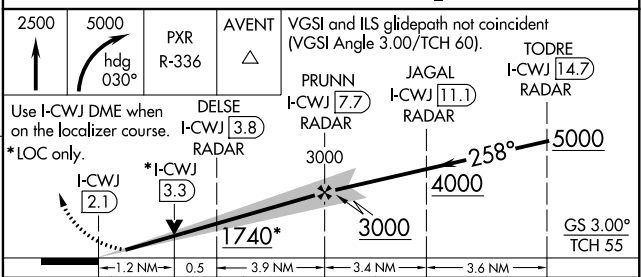
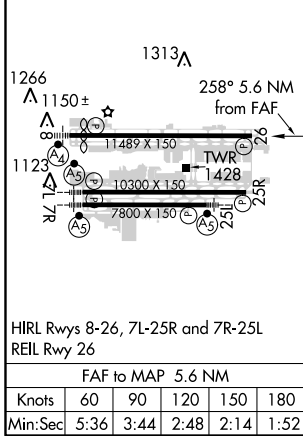
PHOENIX SKY HARBOR INTL (PHX)

Simultaneous approach authorized with Rwy 25L/R. DME required. MISSED APPROACH: Climb to 2500 then climbing right turn to 5000 on heading 030° and PXR VORTAC R-336 to AVENT/PXR 15.9 DME and hold.

D-ATIS 127.575	PHOENIX APP CON 128.65 353.9	PHOENIX TOWER 118.7 278.8 (Rwy 8-26) 120.9 254.3 (Rwy 7L-25R, 7R-25L)	GND CON 119.75 269.2 (N) 132.55 269.2 (S)	CLNC DEL 118.1 269.2	CPDLC
--------------------------	--	---	---	--------------------------------	-------



ELEV 1135	D	TDZE 1135
-----------	----------	-----------



CATEGORY	A	B	C	D
S-ILS 26	1386-¾ 251 (300-¾)			
S-LOC 26	1580-1 445 (500-1)	1580-1¼ 445 (500-1¼)	1580-1½ 445 (500-1½)	
C CIRCLING	1740-1 605 (700-1)	1920-2¼ 785 (800-2¼)	2220-3 1085 (1100-3)	

SW-4, 31 JAN 2019 to 28 FEB 2019

SW-4, 31 JAN 2019 to 28 FEB 2019