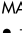


LOC/DME I-RJG 110.75 Chan 44 (Y)	APP CRS 258°	Rwy Idg TDZE Apt Elev	7800 1126 1135
---	------------------------	-----------------------------	---

ILS or LOC RWY 25L

PHOENIX SKY HARBOR INTL (PHX)

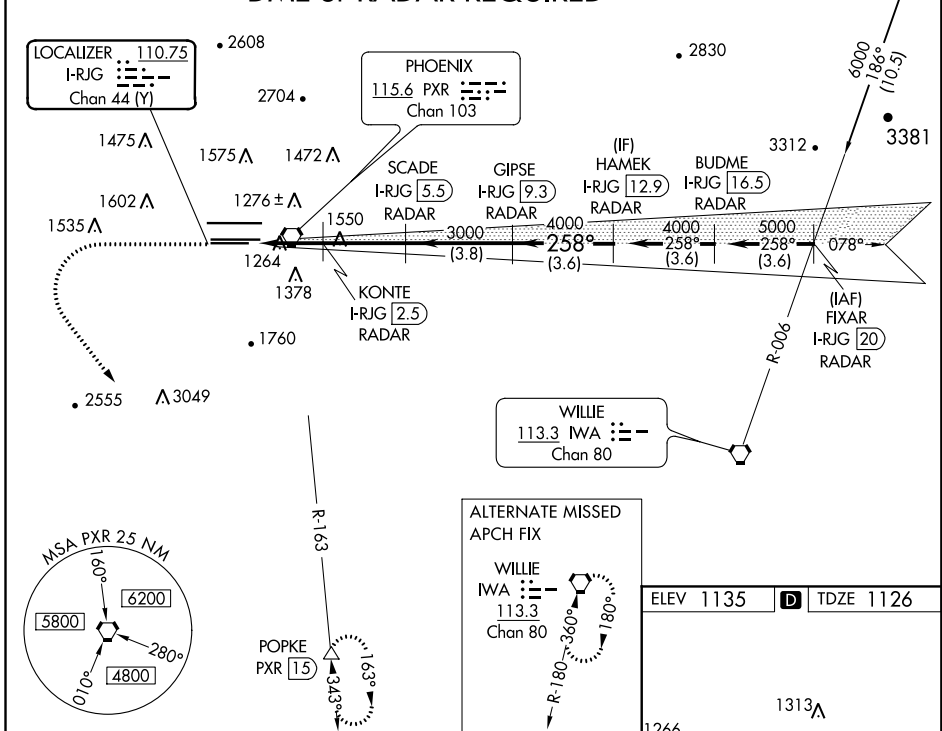
⚠ Autopilot coupled approach NA below 1925.
⚠ Simultaneous approach authorized with Rwy 26.

MALS  MISSED APPROACH: Climb to 3000 then climbing left turn to 5000 on heading 130° and PXR R-163 to POPKE/15 DME and hold.

D-ATIS 127.575	PHOENIX APP CON 128.65 353.9	PHOENIX TOWER 118.7 278.8 (Rwy 8-26) 120.9 254.3 (Rwy 7L-25R, 7R-25L)	GND CON 119.75 269.2 (N) 132.55 269.2 (S)	CLNC DEL 118.1 269.2	CPDLC
--------------------------	--	---	---	--------------------------------	-------

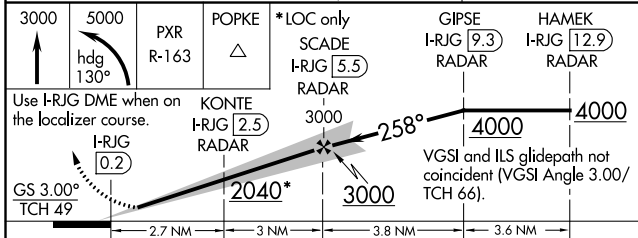
△ 2358

DME or RADAR REQUIRED

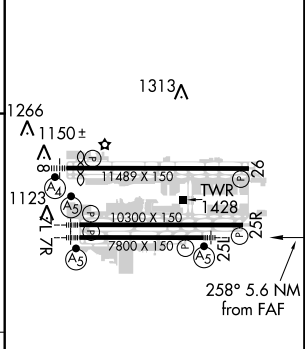


SW-4, 31 JAN 2019 to 28 FEB 2019

SW-4, 31 JAN 2019 to 28 FEB 2019



ELEV 1135	D	TDZE 1126
-----------	----------	-----------



3000	5000	PXR R-163	POPKE △	*LOC only	GIPSE I-RJG 9.3 RADAR	HAMEK I-RJG 12.9 RADAR
↑	hdg 130°			SCADE I-RJG 5.5 RADAR		
Use I-RJG DME when on the localizer course.			KONTE I-RJG 2.5 RADAR	3000	4000	4000
GS 3.00° TCH 49				2040*	3000	
				2.7 NM	3 NM	3.8 NM
						3.6 NM
CATEGORY	A		B	C	D	
S-ILS 25L	1326-1/2 200 (200-1/2)					
S-LOC 25L	1520-1/2 394 (400-1/2)			1520-3/4 394 (400-3/4)		
CIRCLING	1740-1	605 (700-1)	1740-1 3/4	605 (700-1 3/4)	1920-2	785 (800-2)

HIRL Rwy 8-26, 7L-25R and 7R-25L					
REIL Rwy 26					
FAF to MAP 5.6 NM					
Knots	60	90	120	150	180
Min:Sec	5:36	3:44	2:48	2:14	1:52