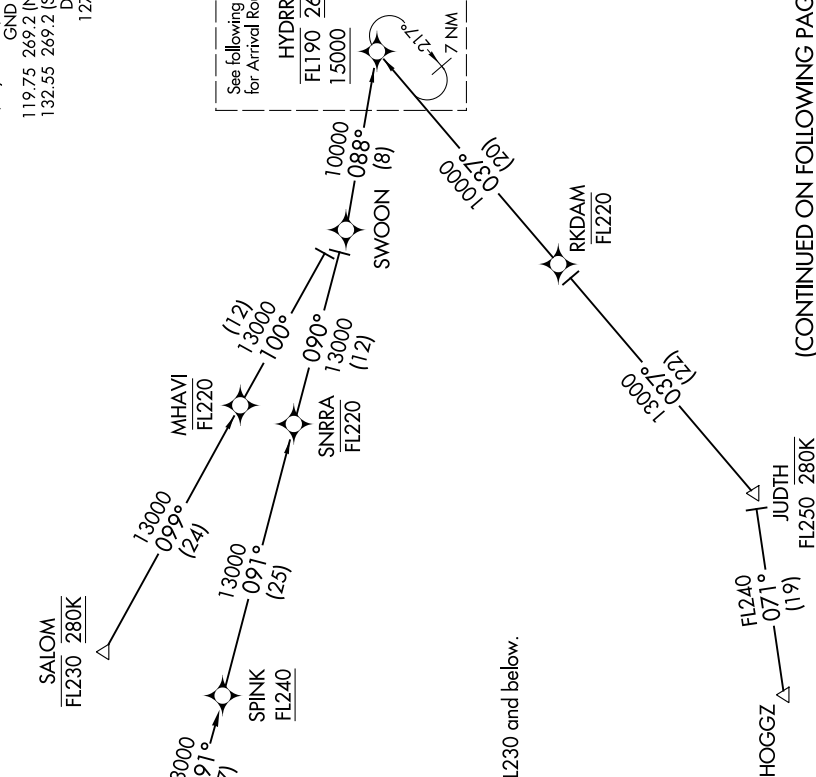


HYDRR ONE ARRIVAL (RNAV) Transition Routes

PHOENIX APP CON  
124.1 256.9  
PHOENIX TOWER  
118.7 278.8 (Rwy 8-26)  
120.9 254.3 (Rwy 7R-25L, 7L-25R)  
GND CON  
119.75 269.2 (North)  
132.55 269.2 (South)  
D-ATIS  
127.575

See following page  
for Arrival Routes.  
HYDRR  
FL190 265K  
15000



(CONTINUED ON FOLLOWING PAGE)

SW-4, 31 JAN 2019 to 28 FEB 2019

- NOTE: RADAR required.
- NOTE: RNAV 1.
- NOTE: DME/DME/IRU or GPS required.
- NOTE: For turbojet aircraft only.
- NOTE: SALOM TRANSITION for aircraft FL230 and below.

NOTE: Chart not to scale.

BLYTHE TRANSITION (BLH.HYDRR1)  
HOGGZ TRANSITION (HOGGZ.HYDRR1)  
SALOM TRANSITION (SALOM.HYDRR1)

SW-4, 31 JAN 2019 to 28 FEB 2019

HYDRR ONE ARRIVAL (RNAV) Transition Routes