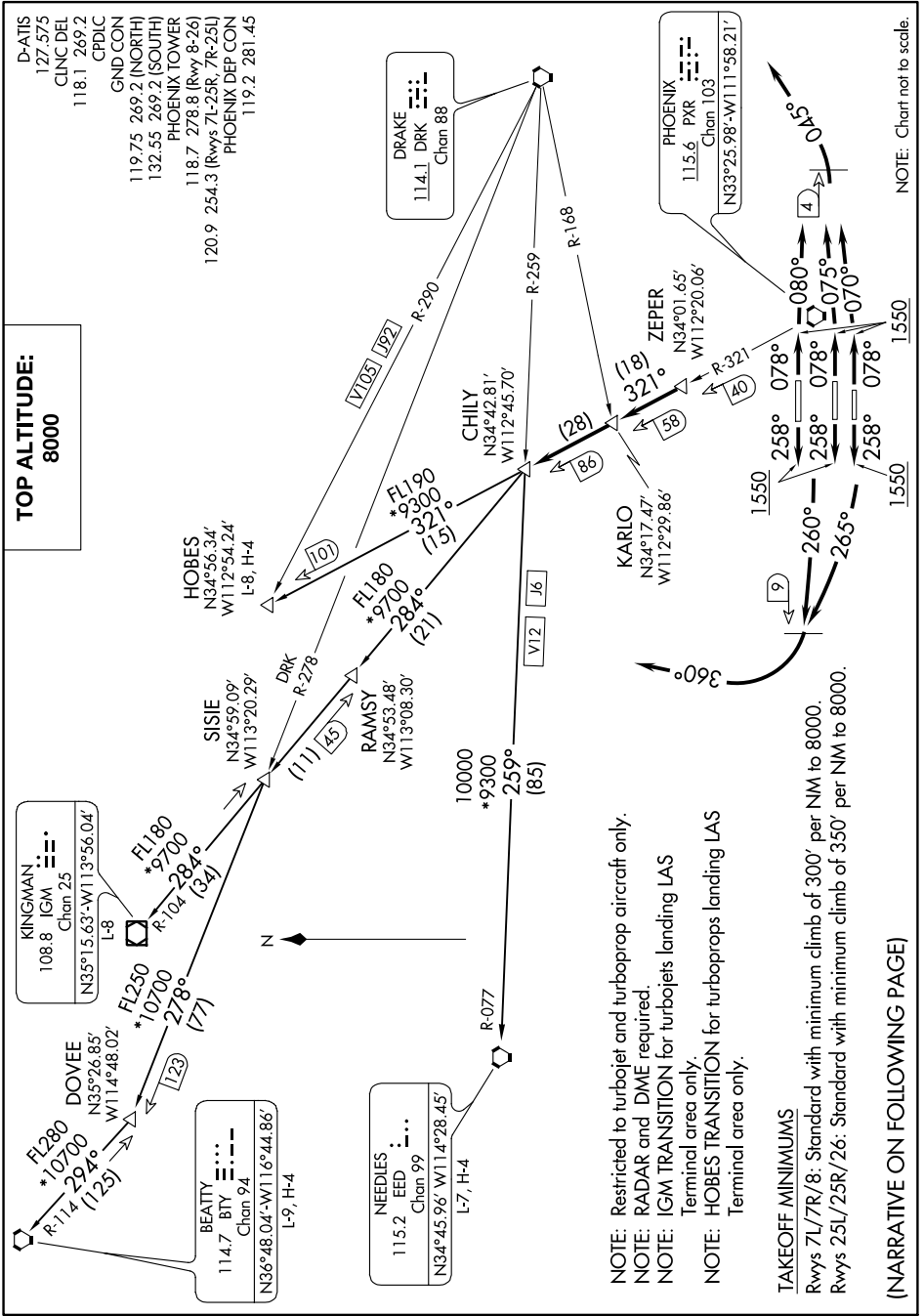


CHILY FOUR DEPARTURE

AL-322 (FAA)

PHOENIX SKY HARBOR INTL (PHX)
PHOENIX, ARIZONA

SW-4, 31 JAN 2019 to 28 FEB 2019



NOTE: Chart not to scale.

SW-4, 31 JAN 2019 to 28 FEB 2019

CHILY FOUR DEPARTURE

(CHILY4.CHILY) 25JUN15

PHOENIX, ARIZONA
PHOENIX SKY HARBOR INTL (PHX)

(NARRATIVE ON FOLLOWING PAGE)

- NOTE: Restricted to turbojet and turboprop aircraft only.
- NOTE: RADAR and DME required.
- NOTE: IGM TRANSITION for turbojets landing LAS Terminal area only.
- NOTE: HOBES TRANSITION for turboprops landing LAS Terminal area only.

TAKEOFF MINIMUMS

Rwy 7L/7R/8: Standard with minimum climb of 300' per NM to 8000.
 Rwy 25L/25R/26: Standard with minimum climb of 350' per NM to 8000.