

BALDY TWO DEPARTURE

AL-322 (FAA)

PHOENIX SKY HARBOR INTL (PHX)

PHOENIX, ARIZONA

SW-4, 31 JAN 2019 to 28 FEB 2019

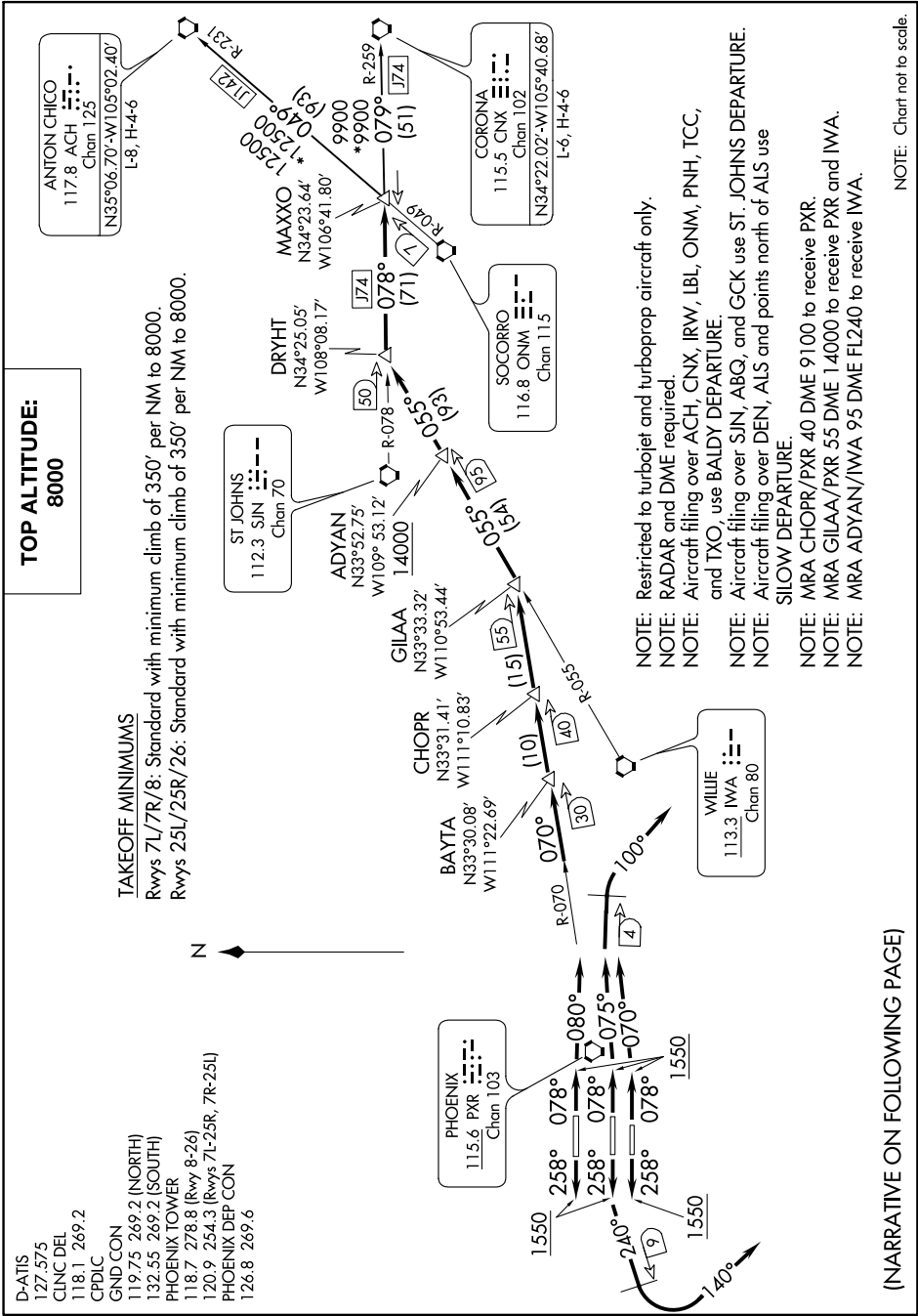
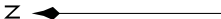
D-ATIS
127.575
CLNC DEL
118.1 269.2
CPDLC

GND CON
119.75 269.2 (NORTH)
132.55 269.2 (SOUTH)
PHOENIX TOWER
118.7 278.8 (Rwy 8-26)
120.9 254.3 (Rwys 7L-25R, 7R-25L)
PHOENIX DEP CON
126.8 269.6

**TOP ALTITUDE:
8000**

TAKEOFF MINIMUMS

Rwys 7L/7R/8: Standard with minimum climb of 350' per NM to 8000.
Rwys 25L/25R/26: Standard with minimum climb of 350' per NM to 8000.



- NOTE: Restricted to turbojet and turboprop aircraft only.
- NOTE: RADAR and DME required.
- NOTE: Aircraft filing over ACH, CNX, IRW, LBL, ONM, PNH, TCC, and TXO, use BALDY DEPARTURE.
- NOTE: Aircraft filing over SJN, ABQ, and GCK use ST. JOHNS DEPARTURE.
- NOTE: Aircraft filing over DEN, ALS and points north of ALS use SILOV DEPARTURE.
- NOTE: MRA CHOPR/PXR 40 DME 9100 to receive PXR.
- NOTE: MRA GILAA/PXR 55 DME 14000 to receive PXR and IWA.
- NOTE: MRA ADYAN/IWA 95 DME FL240 to receive IWA.

(NARRATIVE ON FOLLOWING PAGE)

NOTE: Chart not to scale.

BALDY TWO DEPARTURE

(BALDY2.MAXXO) 19JUL18

PHOENIX, ARIZONA
PHOENIX SKY HARBOR INTL (PHX)