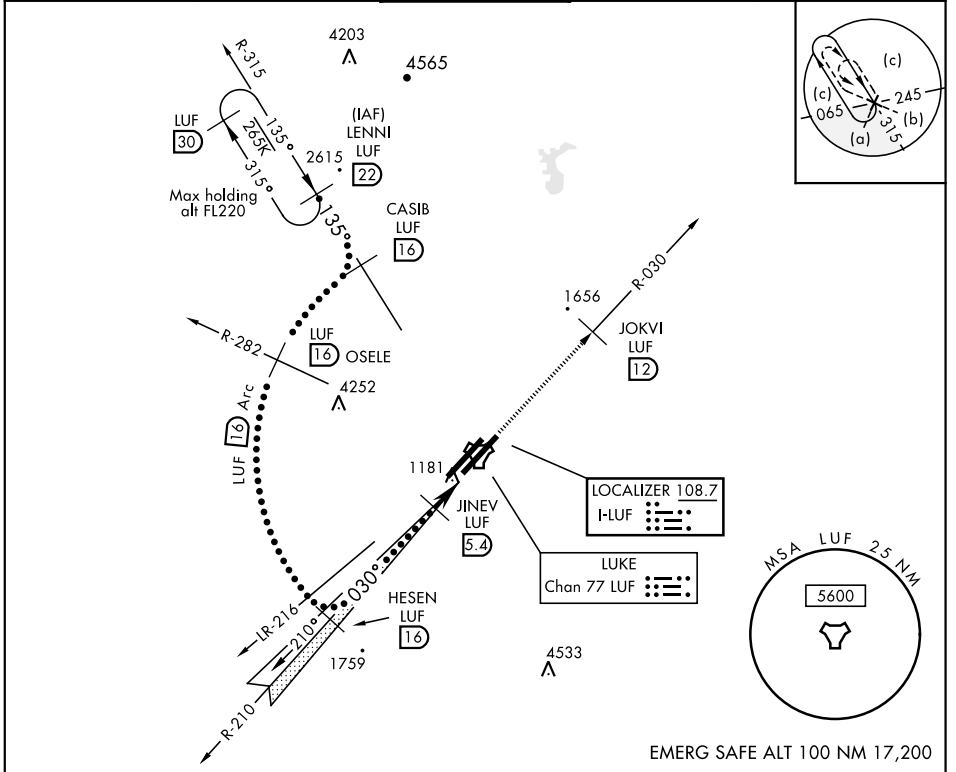


# HI-ILS or LOC/DME RWY 3R

LOC I-LUF <b>108.7</b>	APCH CRS <b>030°</b>	Rwy Idg TDZE <b>1074</b> Arprt Elev <b>1085</b>	JAL-321 [USAF]	LUKE AFB (KLUF)
* When ALS inop, increase RVR to 40 and vis to 3/4 mile. ** When ALS inop, increase RVR to 60 and vis 1/2 miles.			ALSF-1 	MISSED APPROACH: Climbing to 4000, intercept LUF TACAN R-030 to 12 DME (JOKVI). Contact LUKE APP CON.

ATIS ★ <b>134.925 269.9</b>	LUKE APP CON <b>118.15 363.125</b>	LUKE TOWER ★ <b>119.1 379.9</b>	GND CON <b>133.175 335.8</b>	CLNC DEL <b>126.25 273.475</b>
--------------------------------	---------------------------------------	------------------------------------	---------------------------------	-----------------------------------



	LENNI 22	CASIB 16	OSELE R-282	HESEN R-209 16	JINEV 5.4	JOKVI LUF 12	ELEV 1085	TDZE 1074
	12,000							
	GS 3.00° TCH 54							
		7000		5000	2600	1.9		
					2600	1.3		
					4.1 NM	0.5 NM		
CATEGORY	C	D	E					
S-ILS 3R *	1274/24	200	(200-1/2)					
S-LOC/DME 3R **	1480/40	406	(400-3/4)					
SIDESTEP 3L	1520-2 1/2	443	(500-2 1/2)					
CIRCLING	NOT AUTHORIZED							

# HI-ILS or LOC/DME RWY 3R

SW-4, 31 JAN 2019 to 28 FEB 2019

SW-4, 31 JAN 2019 to 28 FEB 2019