

RNAV (GPS) Y RWY 14R

EPPLEY AIRFIELD (OMA)

WAAS CH 56217 W14A	APP CRS 142°	Rwy Idg TDZE Apt Elev	9502 985 985
---------------------------------	------------------------	-----------------------------	---

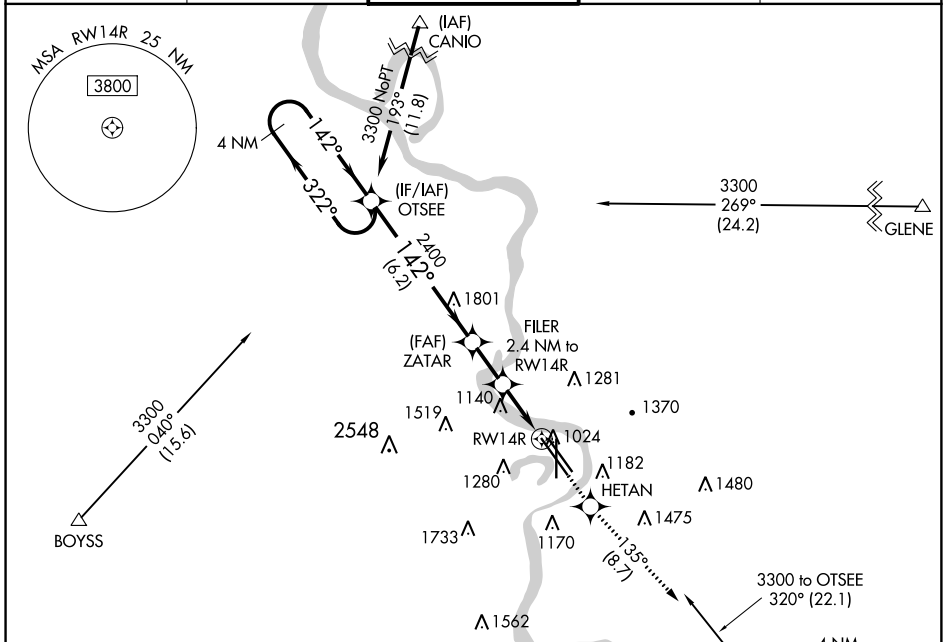
RNP APCH.

▼ For uncompensated Baro-VNAV systems, LNAV/VNAV NA below -19°C (-2°F) or above 54°C (130°F).
▲ For inop ALS, increase LNAV/VNAV all Cats visibility to 1 3/8 SM.

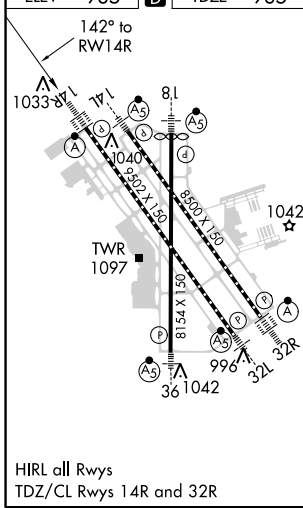
ALS-F-2

MISSED APPROACH: Climb to 3000 direct HETAN and on track 135° to OVR VORTAC and hold.

D-ATIS 120.4	OMAHA APP CON 120.1 354.05	OMAHA TOWER 132.1 256.9	GND CON 121.9	CLNC DEL 119.9
------------------------	--------------------------------------	-----------------------------------	-------------------------	--------------------------

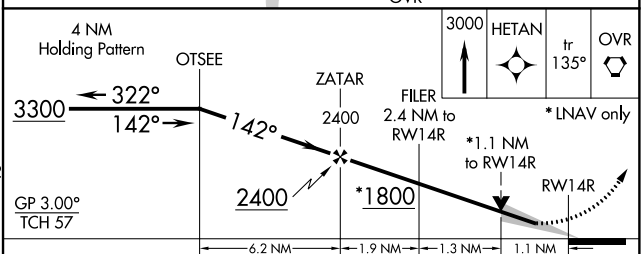


ELEV 985	D	TDZE 985
----------	----------	----------



HIRL all Rwys
 TDZ/CL Rwys 14R and 32R

Procedure NA for arrival on OVR VORTAC airway radials 245 CW 258 and on airway radials 295 CW 312.



CATEGORY	A	B	C	D
LPV DA		1185/18	200 (200-1/2)	
LNAV/VNAV DA		1465/50	480 (500-1)	
LNAV MDA	1380/24	395 (400-1/2)	1380/35	395 (400-3/8)
C CIRCLING	1660-1 675 (700-1)	1680-1 695 (700-1)	2000-3 1015 (1100-3)	2040-3 1055 (1100-3)

NC-2, 31 JAN 2019 to 28 FEB 2019

NC-2, 31 JAN 2019 to 28 FEB 2019