

APP CRS 142°	Rwy Idg 8500
	TDZE 984
	Apt Elev 985

RNAV (RNP) Z RWY 14L

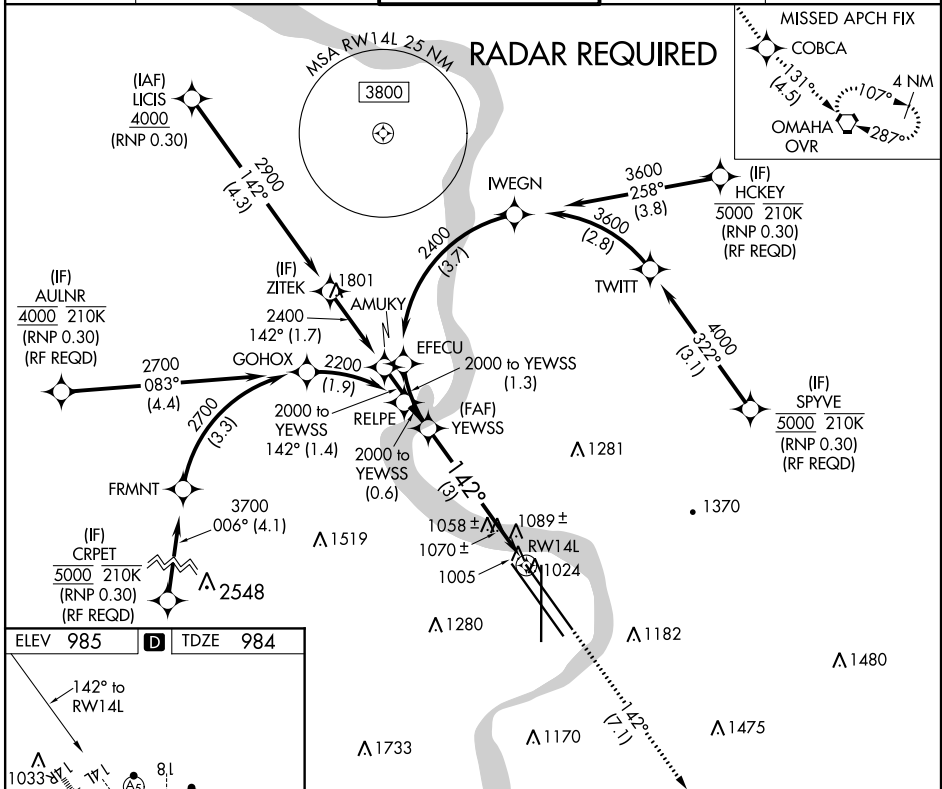
EPPLEY AIRFIELD (OMA)

▼ For uncompensated Baro-VNAV systems, procedure NA below -17°C (2°F) or above 54°C (130°F). For inoperative ALS, increase RNP 0.15 all Cats visibility to 1½ and RNP 0.30 all Cats visibility to 1¾. GPS required.

MALSRL
AS

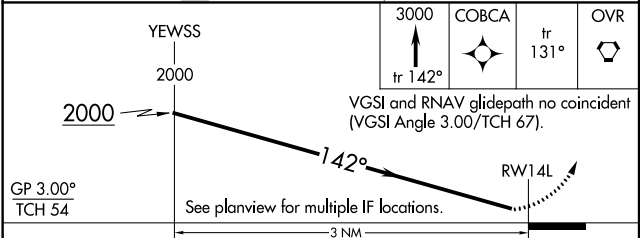
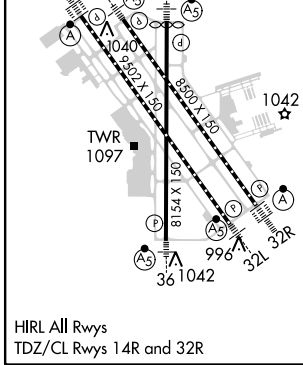
MISSED APPROACH: Climb to 3000 on track 142° to COBCA and on track 131° to OVR VORTAC and hold.

D-ATIS 120.4	OMAHA APP CON 120.1 354.05	OMAHA TOWER 132.1 256.9	GND CON 121.9	CLNC DEL 119.9
------------------------	--------------------------------------	-----------------------------------	-------------------------	--------------------------



NC-2, 31 JAN 2019 to 28 FEB 2019

NC-2, 31 JAN 2019 to 28 FEB 2019



GP 3.00° TCH 54	See planview for multiple IF locations.
CATEGORY	A B C D
RNP 0.15 DA	1335/40 351 (400-¾)
RNP 0.30 DA	1395/45 411 (500-¾)

HIRL All Rwys
TDZ/CL Rwys 14R and 32R

AUTHORIZATION REQUIRED

OMAHA, NEBRASKA
Orig-B 24MAY18

41°18'N-95°54'W

RNAV (RNP) Z RWY 14L

EPPLEY AIRFIELD (OMA)