

# PAWNEE CITY ONE ARRIVAL

AL-304 (FAA)

OMAHA, NEBRASKA

## ARRIVAL ROUTE DESCRIPTION

From over PWE VORTAC via PWE R-001 to TIMMO INT/28 DME to MOONR INT/42 DME. Thence . . . .

. . . . EPPLEY AIRFIELD (OMA):

RUNWAYS 14L/R, 18: To MEPWE INT/53 DME, depart MEPWE INT via heading 355°, expect RADAR vectors to final approach course.

RUNWAYS 32L/R, 36: Depart MOONR INT via heading 042°, expect RADAR vectors to final approach course.

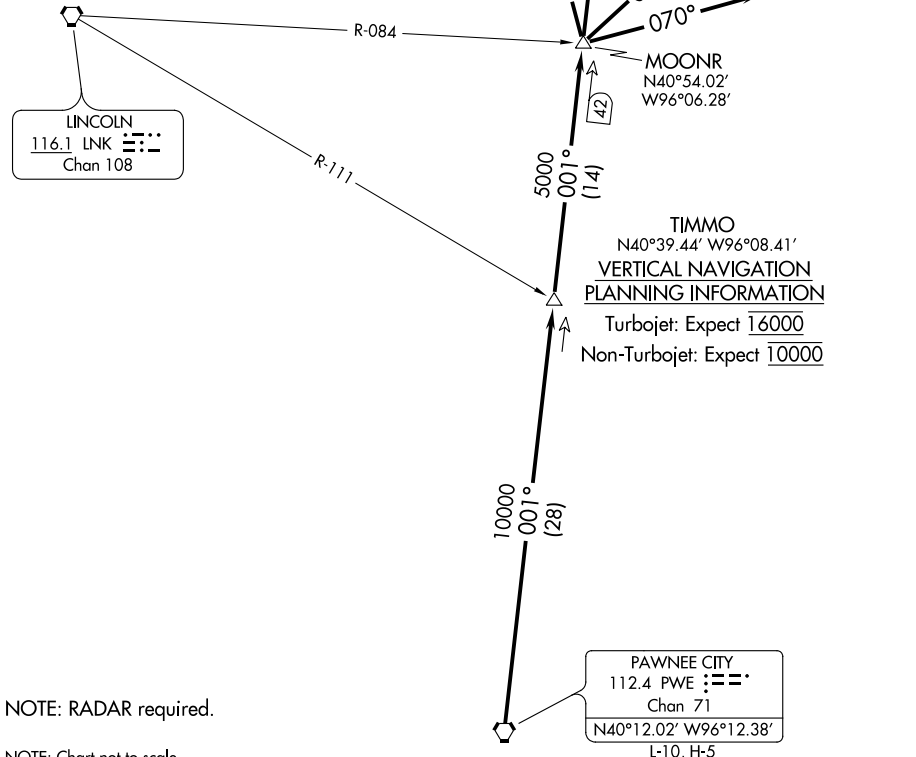
. . . . OFFUT AFB (OFF):

RUNWAY 12: Depart MOONR INT via heading 340°, expect RADAR vectors to final approach course.

RUNWAY 30: Depart MOONR INT via heading 070°, expect RADAR vectors to final approach course.

EPPLEY AIRFIELD D-ATIS  
120.4  
OFFUTT AFB ATIS  
126.025 273.5  
OMAHA APP CON  
124.5 263.0 EAST  
120.1 354.05 WEST

EPPLEY AIRFIELD



NOTE: RADAR required.

NOTE: Chart not to scale.

PAWNEE CITY  
112.4 PWE : ---  
Chan 71  
N40°12.02' W96°12.38'  
L-10, H-5

NC-2, 31 JAN 2019 to 28 FEB 2019

NC-2, 31 JAN 2019 to 28 FEB 2019

# PAWNEE CITY ONE ARRIVAL

OMAHA, NEBRASKA